



5 Fourth Avenue, Forest Town

£125,000 Freehold

THREE BEDROOM MID-TERRACED PROPERTY • GENEROUS SIZED LOUNGE • OPEN PLAN KITCHEN AND DINER • OFF ROAD PARKING • CONVENIENTLY LOCATED TO LOCAL SHOPS AND SCHOOLS • EPC RATING D, NO UPWARD CHAIN



41 Albert Street, Mansfield, NG18 6AN
 Sales: 01623 627 247
 email:enquiries@johnsankey.com

John Sankey





Kitchen/Diner

An open-plan space featuring a kitchen with wall and base units, tiled splashback, integrated oven, hob and extractor fan, spotlights, UPVC double glazed window, and power points. The dining area accommodates seating for 4 to 6 people and includes another UPVC double glazed window for natural light, as well as a central heating radiator.

Lounge

10' 9" x 18' 9" (3.28m x 5.72m)

A well-proportioned living area with a UPVC double glazed window, central heating radiator, laminate flooring, power points and a very useful under stairs storage cupboard.

First floor

Bedroom No 1

13' 10" x 9' 9" (4.22m x 2.97m)

A generously sized double bedroom featuring a UPVC double glazed bay window, central heating radiator, and power points.

Bedroom No 2

11' 0" x 9' 3" (3.35m x 2.82m)

This second double bedroom includes a central heating radiator, power points, and a UPVC double glazed window overlooking the rear garden.

Bedroom No 3

10' 3" x 9' 11" (3.12m x 3.02m)

A third double bedroom offering built-in storage, a large UPVC double glazed window, central heating radiator, and power points.

Bathroom

Fitted with a bath and electric shower, pedestal sink, and low flush WC. The area is finished with tiled splashbacks, a fully tiled shower surround, matching floor tiles, a central heating towel rail, and a UPVC double glazed window.

Outside

To the front of the property, there is a driveway providing off-road parking, along with an outhouse equipped with power points and useful storage space. The rear of the property features a low-maintenance patio garden with established shrubbery.

Additional Information

Tenure:Freehold

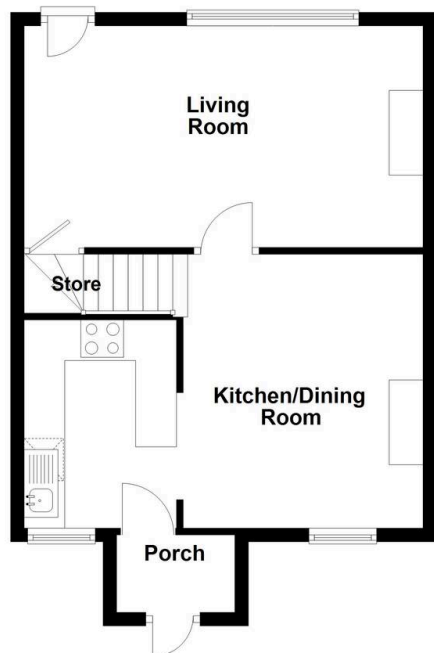
Council Tax band: A

Mobile/Broadband Coverage Checker
visit: www.ofcom.org.uk then click
mobile & broadband checker.



Ground Floor

Approx. 45.8 sq. metres (493.3 sq. feet)



First Floor

Approx. 42.8 sq. metres (460.4 sq. feet)



Total area: approx. 88.6 sq. metres (953.6 sq. feet)

Disclaimer: These floor plans are for marketing purposes only and are approximate. They should not be relied upon for exact measurements or property details. Prospective purchasers are advised to verify all information through their own inspection. No responsibility is taken for any errors, omissions or mis-statements.
Plan produced using PlanUp.