



12 Crowtrees Drive, Sutton-In-Ashfield

£179,950 Leasehold

Beautifully Presented Semi Detached House • Modern Shower Room • Driveway for two vehicles EV Charger and rear enclosed garden • Spacious Dining Kitchen with door to rear • Epc rating: c



41 Albert Street, Mansfield, NG18 6AN
Sales: 01623 627 247
email: enquiries@johnsankey.com

John Sankey





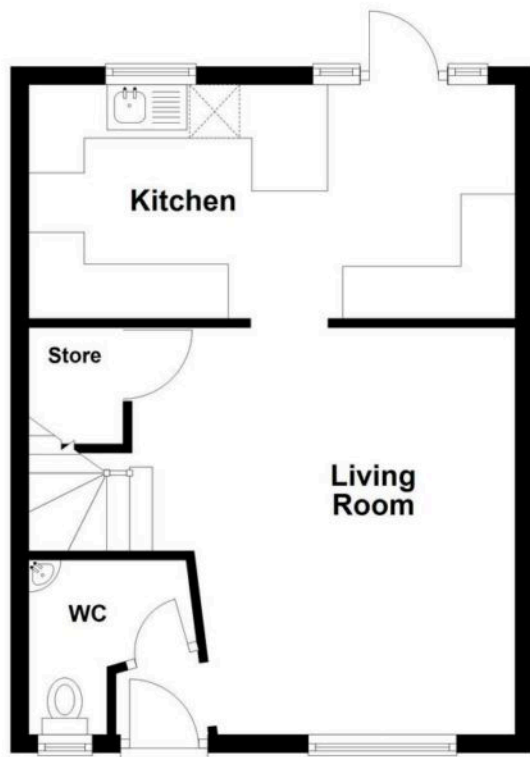


You can include any text here. The text can be modified upon generating your brochure.



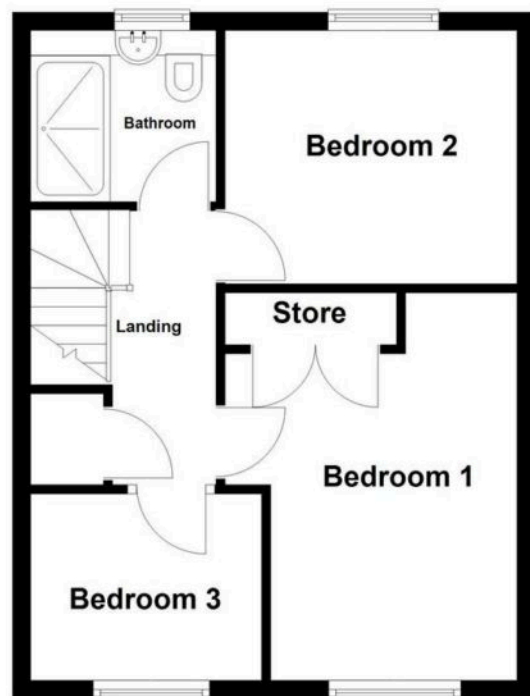
Ground Floor

Approx. 38.5 sq. metres (414.0 sq. feet)



First Floor

Approx. 39.4 sq. metres (423.6 sq. feet)



Total area: approx. 77.8 sq. metres (837.6 sq. feet)

Disclaimer: These floor plans are for marketing purposes only and are approximate. They should not be relied upon for exact measurements or property details. Prospective purchasers are advised to verify all information through their own inspection. No responsibility is taken for any errors, omissions or mis-statements.

Plan produced using PlanUp.

You can include any text here. The text can be modified upon generating your brochure.



41 Albert Street, Mansfield, NG18 6AN
Sales: 01623 627 247
email:enquiries@johnsankey.com

John Sankey

