



12 Crowtrees Drive, Sutton-In-Ashfield

£189,950 Freehold

Beautifully Presented Semi Detached House • Modern Shower Room • Driveway for two vehicles and rear enclosed garden • Spacious Dining Kitchen with door to rear



41 Albert Street, Mansfield, NG18 6AN
Sales: 01623 627 247
email: enquiries@johnsankey.com

John Sankey





Hallway

With radiator and doors to the WC and lounge.

Lounge

With upvc double glazed window to the front of the property, stairs to the first floor, doors leading to the hallway and kitchen, two radiators and under stair storage that houses the built in air conditioning unit that serves the whole of the downstairs.

Kitchen

Recently renovated, this generous breakfast kitchen comprises of wall and base units cupboards and drawers, breakfast bar, space for cooker, plumbing for washing machine, alder cabinet incorporating space saving larder shelving, upvc double glazed windows and door to the rear garden, making this alight and airy living space, radiator and door to into the lounge.

Downstairs WC

With low flush wc, corner sink, upvc window and radiator.

Stairs and Landing

With doors to three bedrooms, airing cupboard and family shower room.

Bedroom One

With Upvc double glazed window to the front, fitted double wardrobes and radiator.

Bedroom Two

With upvc window and radiator.

Bedroom Three

With Upvc double glazed windows to the front, wardrobes with mirrored sliding doors and radiator.

Bathroom

Fitted with a large walk in shower, low flush wc, wash hand basin in vanity unit, tiled walls, extractor fan and heated towel rail.

Externally

To the front of the property has driveway for two vehicles and gated access to the rear. The rear garden is fully enclosed.

Additional Information

Mobile/Broadband Coverage Checker visit:
www.ofcom.org.uk then click mobile &
broadband checker

Freehold

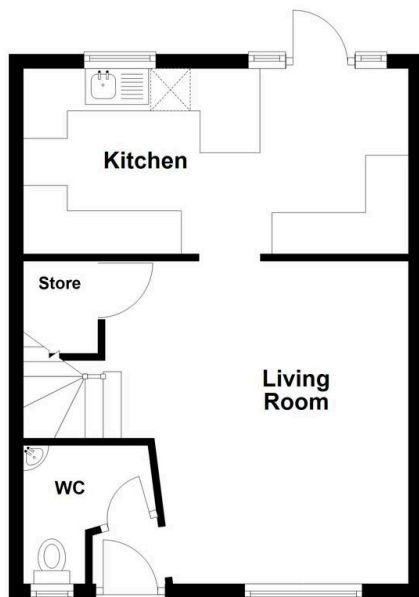
Epc Rating C

Council Tax Band B



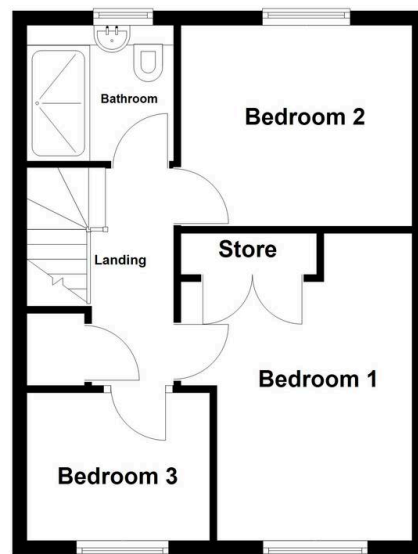
Ground Floor

Approx. 38.5 sq. metres (414.0 sq. feet)



First Floor

Approx. 39.4 sq. metres (423.6 sq. feet)



Total area: approx. 77.8 sq. metres (837.6 sq. feet)

Disclaimer: These floor plans are for marketing purposes only and are approximate. They should not be relied upon for exact measurements or property details. Prospective purchasers are advised to verify all information through their own inspection. No responsibility is taken for any errors, omissions or mis-statements.
Plan produced using PlanUp.