



£1,050 pcm

To Let

3 Bedrooms New Build Apartment

The Milking Parlour Croydon



[www.martincolondon.com](http://www.martincolondon.com)

**MARTIN&CO**

145 Brighton Road, South Croydon, Surrey, CR2 6EF

# To Let

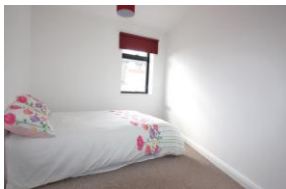
## £1,050 pcm

### 3 Bedrooms New Build Apartment

---

**STUNNING BRAND NEW APARTMENT!**  
Lovely ground floor flat with 2 double bedrooms plus useful dressing room/study in a sought after area close to South Croydon Station. Private entrance, large reception room, fitted kitchen, smart bathroom, gas heating, private patio - **CALL US NOW!**

- Brand New Flat
- 2 Double Bedrooms Plus Study/Nursery
- Smart Kitchen & Bathroom
- Gas Heating
- Private Patio
- 
- 
- 
- EPC Rating: TBC



TOTAL APPROX. FLOOR AREA 672 SQ.FT. (62.5 SQ.M.)  
Whilst every attempt has been made to ensure the accuracy of the floor plan contained here, measurements of doors, windows, rooms and any other items are approximate and no responsibility is taken for any error, omission, or mis-statement. This plan is for illustrative purposes only and should be used as such by any prospective purchaser. The services, systems and appliances shown have not been tested and no guarantee as to their operability or efficiency can be given.  
Made with Metropac 6/2013



[www.martincolondon.com](http://www.martincolondon.com)

**MARTIN&CO**