

LET



Stafford Road, Croydon  
£1,250 pcm

  
**MARTIN&CO**

## Stafford Road, Croydon

Date available: 9th March 2025

Deposit: £1,442.30

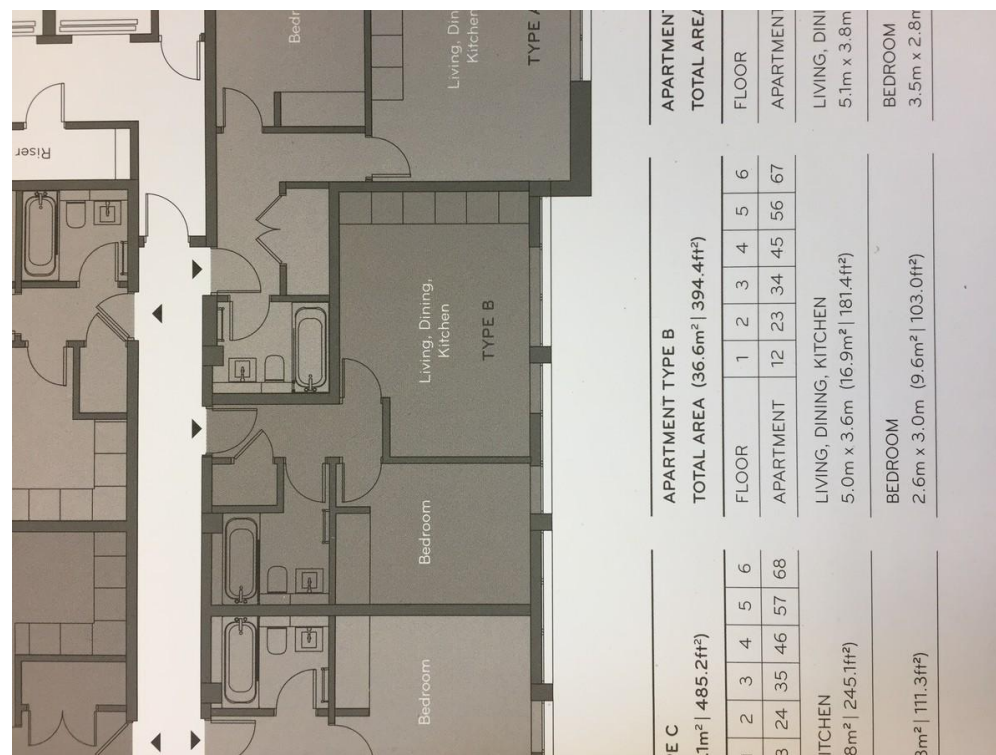
Unfurnished

Council Tax band: B

- Modern Apartment
- 10 Minutes to Station
- Fantastic Modern Finish
- Large Living Room
- Fully Fitted Kitchen with Dishwasher
- Wood Flooring
- Built-In Wardrobe

Score	Energy rating	Current	Potential
92+	A		
81-91	B		
69-80	C	73 C	73 C
55-68	D		
39-54	E		
21-38	F		

SMART-APART! Superb modern apartment conveniently located on the Croydon/Wallington borders close to Waddon Station. Entrance hall, bright spacious reception room with contemporary-style open-plan fully fitted kitchen, double bedroom with built-in wardrobe, luxury bathroom, concierge - CALL NOW!



## Martin & Co Croydon

145 Brighton Road • • South Croydon • CR2 6EF

T: 0208 688 8565 • E: croydon@martinco.com

0208 688 8565

<http://www.martinco.com>



**Accuracy:** References to the Tenure of a Property are based on information supplied by the Seller. The Agent has not had sight of the title documents. A Buyer is advised to obtain verification from their Solicitor. Items shown in photographs including but not limited to carpets, fixtures and fittings are not included unless specifically mentioned within the sales particulars. They may however be available by separate negotiation. Buyers must check the availability of any property and make an appointment to view before embarking on any journey to see a property. No person in the employment of the agent has any authority to make any representation about the property, and accordingly any information given is entirely without responsibility on the part of the agents, sellers(s) or lessors(s). Any property particulars are not an offer or contract, nor form part of one. **Sonic / Laser Tape:** Measurements taken using a sonic / laser tape measure may be subject to a small margin of error. **All Measurements:** All Measurements are Approximate. **Services Not tested:** The Agent has not tested any apparatus, equipment, fixtures and fittings or services and so cannot verify that they are in working order or fit for the purpose. A Buyer is advised to obtain verification from their Solicitor or Surveyor.