

FOR SALE



Clyde Road, Croydon

5 Bedrooms, 2 Bathroom, Mid Terraced House

Offers In Excess Of £585,000


MARTIN&CO



Spacious 5-Bedroom, 2-Bathroom Family Home in Prime East Croydon Location!

- Large 5 Bedroom Family House
- 1903sq ft
- Two Reception Rooms
- Two Bathrooms
- In Need of Modernisation
- Arranged over 3 Floors
- Sunny Easy to Maintain Garden

%epcGraph_c_1_331%

Situated on a quiet one-way street just moments from East Croydon Station and local tram stops, this substantial family home offers a rare opportunity to create your dream space in a highly sought-after location.

Arranged over three floors, the property features:

Five generously sized bedrooms

Two bathrooms

Two reception rooms, offering flexible living space

A bright conservatory

A sunny west-facing garden - perfect for summer afternoons

Off-road parking

This home is in need of modernisation, making it ideal for buyers looking to add their own style and value. With great bones, a spacious layout, and unbeatable transport links, it's brimming with potential. Call us for an appointment now!

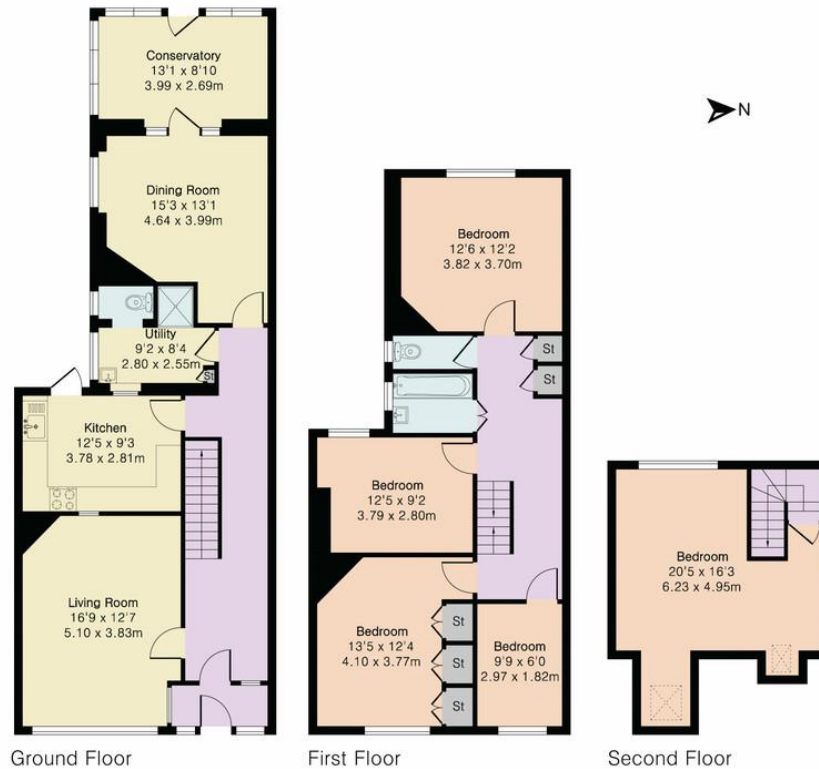


Approximate Gross Internal Area 1903 sq ft - 176 sq m

Ground Floor Area 916 sq ft – 85 sq m

First Floor Area 724 sq ft – 67 sq m

Second Floor Area 263 sq ft – 24 sq m



Although Pink Plan Ltd ensures the highest level of accuracy, measurements of doors, windows and rooms are approximate and no responsibility is taken for error, omission or misstatement. These plans are for representation purposes only as defined by RICS code of measuring practise. No guarantee is given on total square footage of the property within this plan. The figure icon is for initial guidance only and should not be relied on as a basis of valuation.



MARTIN&CO

Martin & Co Croydon

145 Brighton Road • South Croydon • CR2 6EF
T: 0208 688 8565 • E: croydon@martinco.com

0208 688 8565

<http://www.martinco.com>



Accuracy: References to the Tenure of a Property are based on information supplied by the Seller. The Agent has not had sight of the title documents. A Buyer is advised to obtain verification from their Solicitor. Items shown in photographs including but not limited to carpets, fixtures and fittings are not included unless specifically mentioned within the sales particulars. They may however be available by separate negotiation. Buyers must check the availability of any property and make an appointment to view before embarking on any journey to see a property. No person in the employment of the agent has any authority to make any representation about the property, and accordingly any information given is entirely without responsibility on the part of the agents, sellers(s) or lessors(s). Any property particulars are not an offer or contract, nor for part of one. **Sonic / Laser Tape:** Measurements taken using a sonic / laser tape measure may be subject to a small margin of error. **All Measurements:** All Measurements are Approximate. **Services Not tested:** The Agent has not tested any apparatus, equipment, fixtures and fittings or services and so cannot verify that they are in working order or fit for the purpose. A Buyer is advised to obtain verification from their Solicitor or Surveyor.