

FOR SALE



Two Bedroom, Two Bathroom Apartment, Salvisburg Court Welwyn Garden City

ASKING PRICE OF £285,000


MARTIN&CO



Salvisburg Court Welwyn Garden City

Two Bedrooms, Two Bathrooms

ASKING PRICE OF £285,000

- Chain Free!!
- Modern Two Bedroom, Two Bathroom Apartment situated a short walk from the Town Centre
- Allocated Parking
- Hot water and heating included in service charge
- Lift to all floors
- Video EntryPhone System
- Close to nearby transport links

SUMMARY

CHAIN FREE!! This modern two-bedroom, two-bathroom Apartment is located on a popular and convenient development, located a short walk from the Town Centre and Train Station. The property features entrance hall, open-plan kitchen/lounge/diner, master bedroom with ensuite, second bedroom, and bathroom. The development benefits from exceptional transport links, with Welwyn Garden City railway station a stone's throw away, offering regular services to London King's Cross in under 30 minutes, and access to the A1(M) is within two miles. Welwyn Garden City features a range of shops, restaurants, and other independent retailers.

ENTRANCE HALL

Laminate floor, radiator, video entry-phone, door to cupboard housing hot water and heating system, smoke alarm, ceiling light.

LOUNGE/KITCHEN/DINER 19' 8" x 17' 6" (5.99m x 5.33m)

Laminate floor, a selection of white wall and base units with under-cupboard lighting, wood effect work surfaces, stainless steel sink with mixer tap, with Zanussi electric oven and hob, stainless steel splashback and extractor filter-hood over, fridge-freezer, slimline dishwasher, washing machine/dryer. The lounge area has two radiators, double glazed windows to front aspect, ceiling lights.

MASTER BEDROOM 13' 4" x 12' 2" (4.06m x 3.71m)

Carpet, radiator, fitted floor to ceiling mirrored wardrobe, double-glazed window and French door to Juliet balcony, ceiling light.

ENSUITE

Tiled floor, part-tiled walls, double shower cubicle with electric shower, low-level WC, pedestal sink with silver mixer tap, mirror, extractor fan, ceiling lights.

BEDROOM TWO 11' 9" x 10' 8" (3.58m x 3.25m)

Carpet, radiator, double glazed window and French door with Juliet Balcony, ceiling light.

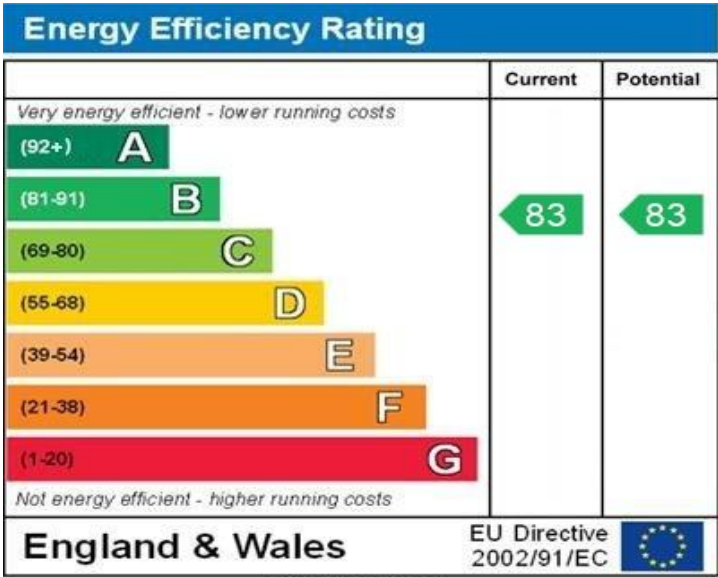


BATHROOM

Tiled floor, part-tiled walls, white three-piece bathroom suite comprising panel enclosed bath with silver mixer tap, electric shower, pedestal sink with silver mixer tap, low-level flush WC, mirror, extractor fan, ceiling lights.

EXTERNAL

Allocated parking, attractive communal gardens.



WWW.EPC4U.COM



Approximate Gross Internal Area = 65.1 sq m / 701 sq ft

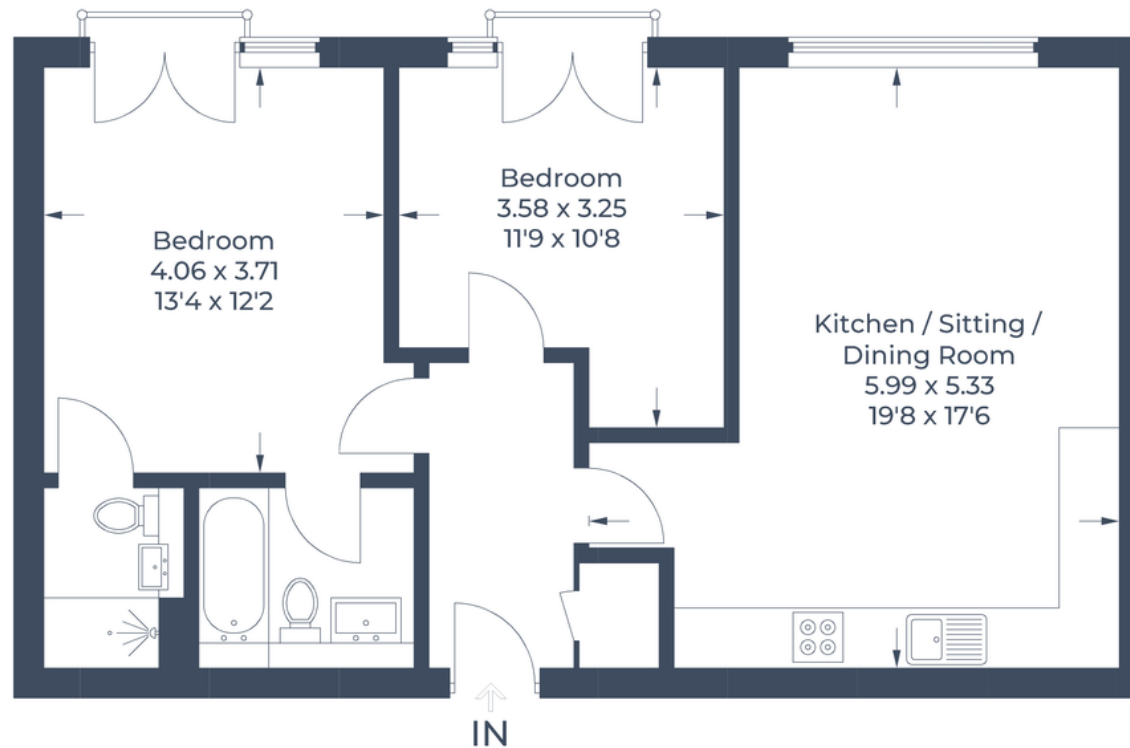


Illustration for identification purposes only,
measurements are approximate, not to scale.
© CJ Property Marketing Produced for Martin & Co

Martin & Co Welwyn

16 Howardsgate • Welwyn Garden City • AL8 6BQ
T: 01707 334576 • E: welwyn@martinco.com

01707 334576

<http://welwyn.martinco.com>


MARTIN&CO

Accuracy: References to the Tenure of a Property are based on information supplied by the Seller. The Agent has not had sight of the title documents. A Buyer is advised to obtain verification from their Solicitor. Items shown in photographs including but not limited to carpets, fixtures and fittings are not included unless specifically mentioned within the sales particulars. They may however be available by separate negotiation. Buyers must check the availability of any property and make an appointment to view before embarking on any journey to see a property. No person in the employment of the agent has any authority to make any representation about the property, and accordingly any information given is entirely without responsibility on the part of the agents, sellers(s) or lessors(s). Any property particulars are not an offer or contract, nor form part of one. **Sonic / laser Tape:** Measurements taken using a sonic / laser tape measure may be subject to a small margin of error. **All Measurements:** All Measurements are Approximate. **Services Not tested:** The Agent has not tested any apparatus, equipment, fixtures and fittings or services and so cannot verify that they are in working order or fit for the purpose. A Buyer is advised to obtain verification from their Solicitor or Surveyor.