



Cherry Tree Lane Rainham

£1,350 PCM

APS have pleasure in offering this spacious 1 bedroom flat located close to shops and Rainham station. The property boasts a fitted kitchen with appliances (washing machine, fridge-freezer, oven & hob), bathroom with shower facilities over bath and double bedroom. Other benefits include double glazing, gas central heating, own private garden and parking. Available 20th September 2025. Council Tax Band A.

- **FITTED KITCHEN WITH APPLIANCES**
- **DOUBLE BEDROOM**
- **DOUBLE GLAZING**
- **GAS CENTRAL HEATING**
- **PRIVATE GARDEN**
- **OFF STREET PARKING**

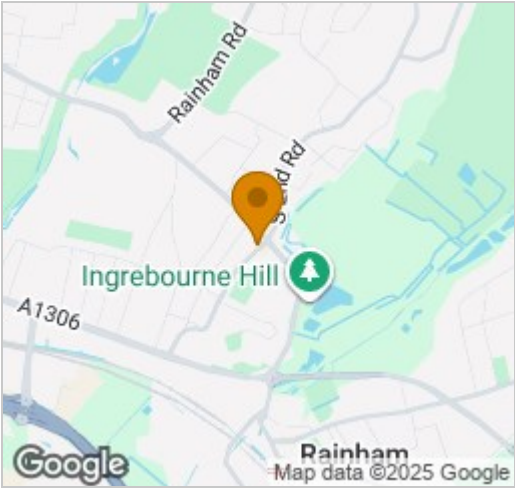
Viewing

Please contact our Alternative Property Services Limited Office on 01708 454121 if you wish to arrange a viewing appointment for this property or require further information.

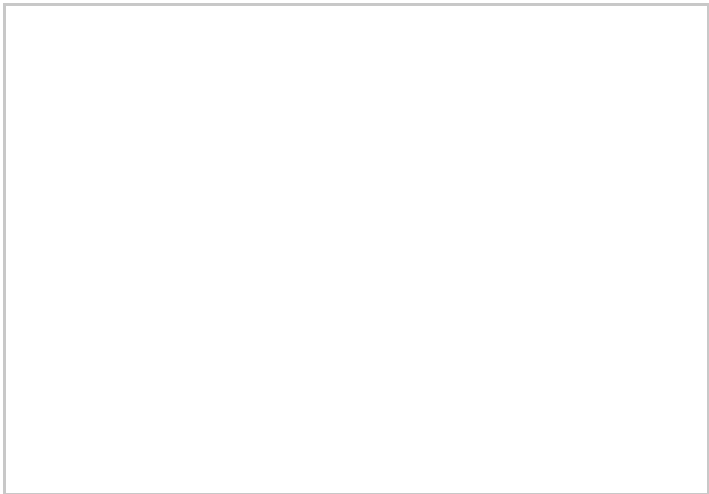
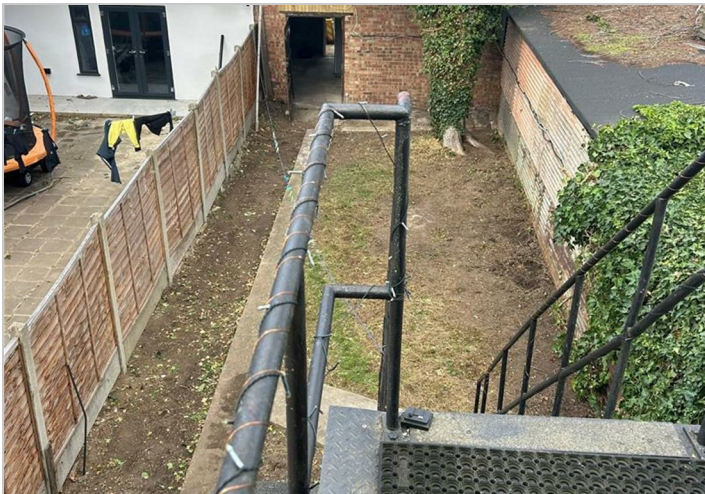
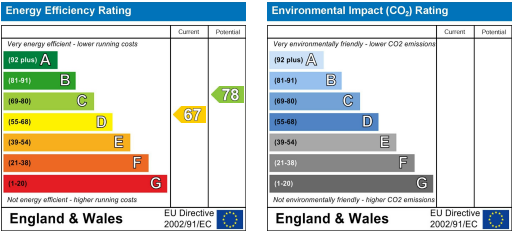




Area Map



Energy Efficiency Graph



These particulars, whilst believed to be accurate are set out as a general outline only for guidance and do not constitute any part of an offer or contract. Intending purchasers should not rely on them as statements of representation of fact, but must satisfy themselves by inspection or otherwise as to their accuracy. No person in this firms employment has the authority to make or give any representation or warranty in respect of the property.