



Stafford Avenue Hornchurch

£1,600 PCM

APS have pleasure in offering this 2 DOUBLE bedroom ground floor apartment which is located within walking distance of Gidea Park Station. The property boasts a modern fitted kitchen with integrated appliances (including a dishwasher, washing machine, fridge-freezer), en-suite bathroom, fitted wardrobes to the master bedroom and a luxury family bathroom with shower over bath. Other benefits include laminated wood flooring, carpets, double glazing, gas central heating and allocated parking spaces. Available 2nd September 2024. Council Tax Band C.

- 2 DOUBLE BEDROOM
- MODERN FITTED KITCHEN WITH APPLIANCES
- EN-SUITE BATHROOM
- DOUBLE GLAZING
- GAS CENTRAL HEATING
- CLOSE TO STATION
- ALLOCATED PARKING

Viewing

Please contact our Alternative Property Services Limited Office on 01708 454121

if you wish to arrange a viewing appointment for this property or require further information.

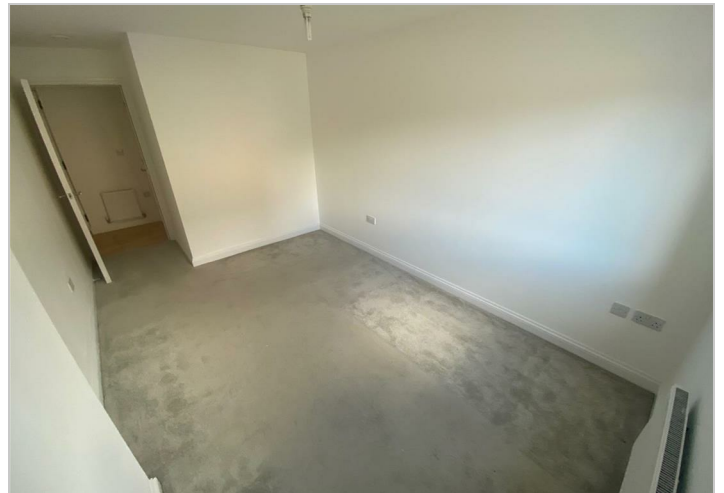
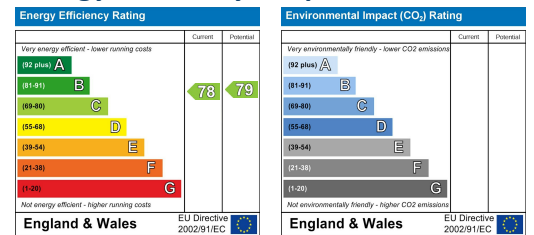




Area Map



Energy Efficiency Graph



These particulars, whilst believed to be accurate are set out as a general outline only for guidance and do not constitute any part of an offer or contract. Intending purchasers should not rely on them as statements of representation of fact, but must satisfy themselves by inspection or otherwise as to their accuracy. No person in this firm's employment has the authority to make or give any representation or warranty in respect of the property.

4 North Street, Hornchurch, Essex, RM11 1QX

Tel: 01708 454121 Email: lettings@alternativepropertyervices.co.uk <https://www.alternativepropertyervices.co.uk>