



## Warriner Avenue Hornchurch

£2,450 PCM

APS have the pleasure of offering this extended 3 bedroom semi detached house which is located within a short walk of Hornchurch station and town centre. The property is decorated and finished to a high standard and boasts a large kitchen diner/family room and centre island, ground floor cloakroom, lounge with period fireplace and a contemporary bathroom suite with power shower over bath. Other benefits include fitted wardrobes to bedroom 2, gas central heating, double glazing, off street parking for 2 cars and a well-maintained mature garden with patio laid to lawn. Available 10th August 2024. Council Tax Band D.

- DECORATED & FINISHED TO A HIGH STANDARD
- FITTED KITCHEN WITH APPLIANCES
- DOUBLE GLAZING , GAS CENTRAL HEATING
- CONTEMPORARY BATHROOM WITH SHOWER OVER BATH
- FITTED WARDROBES
- UTILITY ROOM
- WELL MAINTAINED GARDEN
- OFF STREET PARKING

### Viewing

Please contact our Alternative Property Services Limited Office on 01708 454121

if you wish to arrange a viewing appointment for this property or require further information.



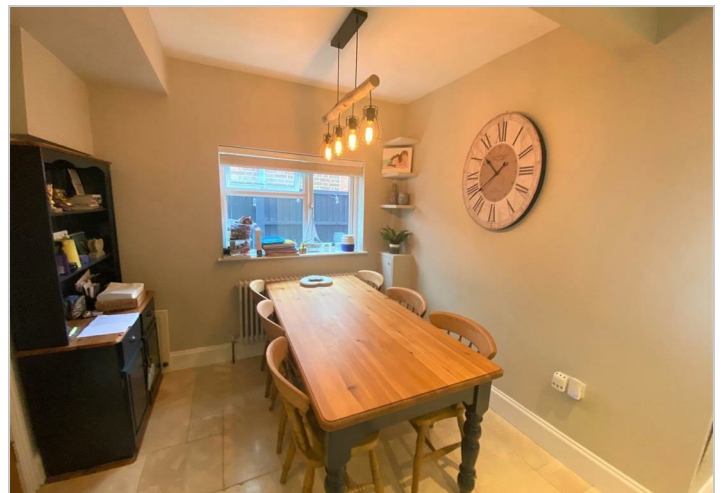
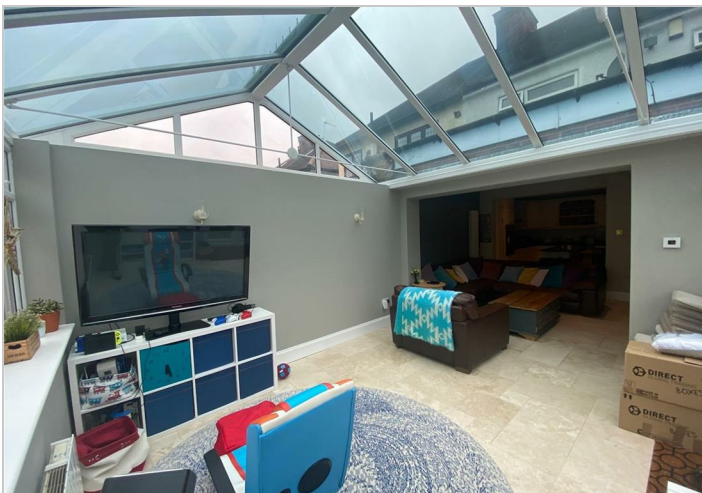
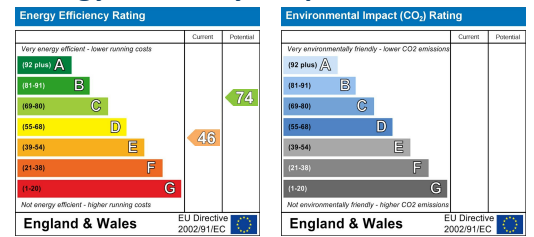




## Area Map



## Energy Efficiency Graph



These particulars, whilst believed to be accurate are set out as a general outline only for guidance and do not constitute any part of an offer or contract. Intending purchasers should not rely on them as statements of representation of fact, but must satisfy themselves by inspection or otherwise as to their accuracy. No person in this firm's employment has the authority to make or give any representation or warranty in respect of the property.

4 North Street, Hornchurch, Essex, RM11 1QX

Tel: 01708 454121 Email: [lettings@alternativepropertyervices.co.uk](mailto:lettings@alternativepropertyervices.co.uk) <https://www.alternativepropertyervices.co.uk>