



Quadrant Estate Agents

£700,000



Dolphin House, Shepherds

Weston on The Green, OX25 3RF

Offered For Sale with No onward chain. A stone-built four-bedroom detached property in a private location within the desirable Oxfordshire village of Weston On The Green enjoying views over paddocks.



QUADRANT
VILLAGE HOMES

www.quadrant-estates.co.uk

ACCOMMODATION

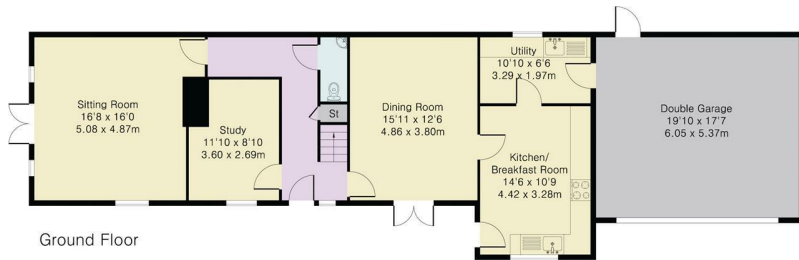
- Stone-Built
- Four Double Bedrooms
- Detached
- Field Views
- Flexible Living Accommodation
- Double garage
- Village Location
- End Of Chain
- En-Suite To Master Bedroom
- Private Location



Approximate Gross Internal Area 2226 sq ft – 207 sq m
 Ground Floor Area 1283 sq ft – 119 sq m
 First Floor Area 943 sq ft – 88 sq m



First Floor



Ground Floor



10Market Square, Bicester, Oxfordshire, OX26 6AD
 t 01869 241166
 sales@quadrant-estates.co.uk

www.quadrant-estates.co.uk

IMPORTANT: we would like to inform prospective purchasers that these sales particulars have been prepared as a general guide only. A detailed survey has not been carried out, nor the services, appliances and fittings tested. Room sizes should not be relied upon for furnishing purposes and are approximate. If floor plans are included, they are for guidance only and illustration purposes only and may not be to scale. If there are any important matters likely to affect your decision to buy, please contact us before viewing the property.