



Quadrant Estate Agents

£600,000

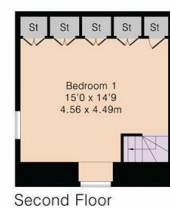
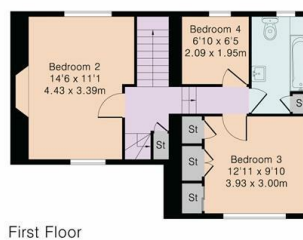
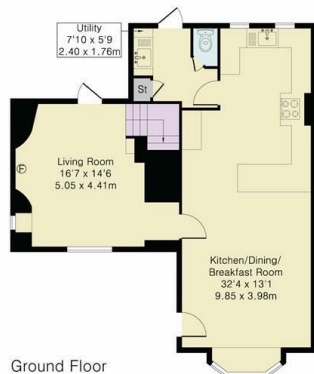


Willow Cottage,

Wendlebury, OX25 2PW

A charming stone-built semi-detached cottage with an abundance of character features arranged over three floors with a fabulous kitchen/dining room, and four bedrooms, in the heart of the Oxfordshire village of Wendlebury.

www.quadrant-estates.co.uk



Approximate Gross Internal Area 1476 sq ft - 138 sq m

Ground Floor Area 718 sq ft – 67 sq m

First Floor Area 504 sq ft – 47 sq m

Second Floor Area 254 sq ft – 24 sq m



Although Pink Plan Ltd ensures the highest level of accuracy, measurements of doors, windows and rooms are approximate and no responsibility is taken for error, omission or misstatement. These plans are for representation purposes only as defined by RICS code of measuring practice. No guarantee is given on total square footage of the property within this plan. The figure icon is for initial guidance only and should not be relied on as a basis of valuation.



ACCOMMODATION

- Stone-Built
- Abundance Of Character Features
- Village Location
- Stunning Kitchen/Dining Room
- Three Double Bedrooms, and A Single Bedroom
- Utility Room
- Feature Fireplace
- Arranged Over Three Floors
- Semi-Detached
- Freehold



10Market Square, Bicester, Oxfordshire, OX26 6AD

t 01869 241166

sales@quadrant-estates.co.uk

www.quadrant-estates.co.uk

IMPORTANT: we would like to inform prospective purchasers that these sales particulars have been prepared as a general guide only. A detailed survey has not been carried out, nor the services, appliances and fittings tested. Room sizes should not be relied upon for furnishing purposes and are approximate. If floor plans are included, they are for guidance only and illustration purposes only and may not be to scale. If there are any important matters likely to affect your decision to buy, please contact us before viewing the property.