



Quadrant Estate Agents

£499,995



## 107, Ludlow Road

Bicester, OX26 1EU

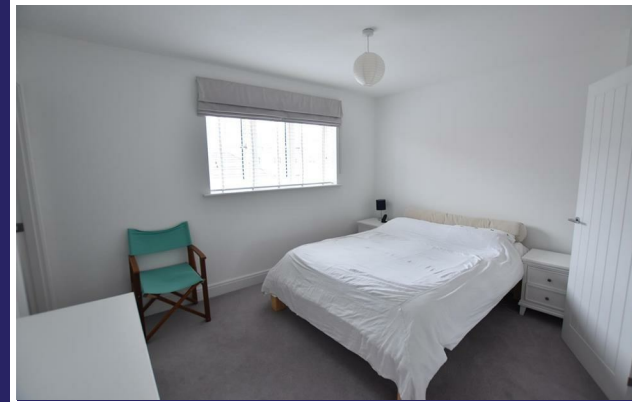
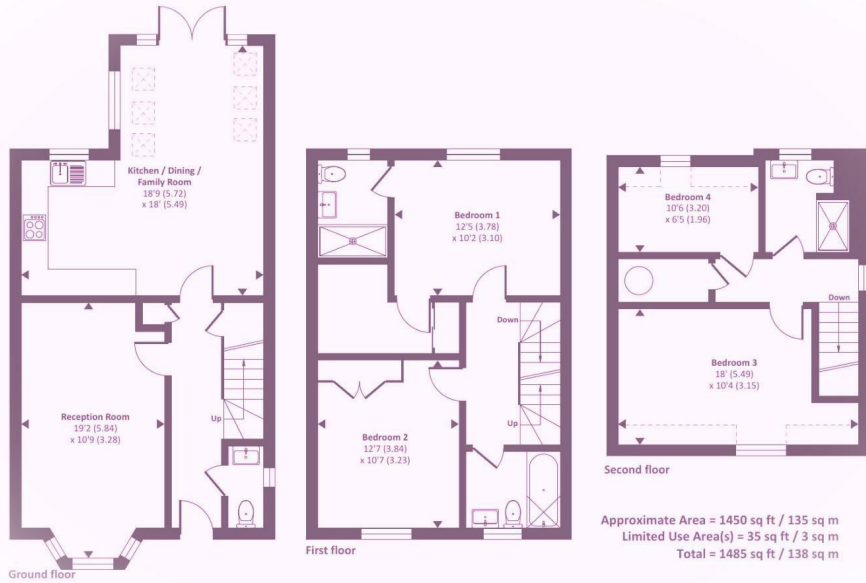
An impressive 4 bedroom semi-detached in the popular 'Kingsmere' development of Bicester boasting generous accommodation & low maintenance rear garden. Master bedroom features an ensuite bathroom and a walk in wardrobe.



[www.quadrant-estates.co.uk](http://www.quadrant-estates.co.uk)

## ACCOMMODATION

- 4 Bedrooms
- Low Maintenance Garden
- Well Presented
- Kingsmere
- Semi-Detached
- Walk-in Wardrobe



10Market Square, Bicester, Oxfordshire, OX26 6AD  
t 01869 241166  
sales@quadrant-estates.co.uk

[www.quadrant-estates.co.uk](http://www.quadrant-estates.co.uk)

IMPORTANT: we would like to inform prospective purchasers that these sales particulars have been prepared as a general guide only. A detailed survey has not been carried out, nor the services, appliances and fittings tested. Room sizes should not be relied upon for furnishing purposes and are approximate. If floor plans are included, they are for guidance only and illustration purposes only and may not be to scale. If there are any important matters likely to affect your decision to buy, please contact us before viewing the property.