



An impressive stone-built five-bedroom property arranged over three floors finished to exceptional standards with a southwest-facing garden, garage, and double carport, approaching 5,000sqft enjoying views over open farmland.





Accommodation Comprises:

Ground Floor - Entrance Hallway With Vaulted Ceiling, Drawing Room, Open Plan Kitchen/Breakfast Room, Family Room, Dining Room, Study, Utility Room, Boot Room, W.C.

First Floor - Principal Bedroom With Dressing Room and En-Suite Shower Room, Two Large Guest Bedrooms With En-Suites.

Second Floor - Two Large Double Bedrooms, And The Family Bathroom.

Outside - Private Gated Driveway With Parking For 6 Vehicles, Garage, Double Bay Carport, Car Charging Point, and A Store.

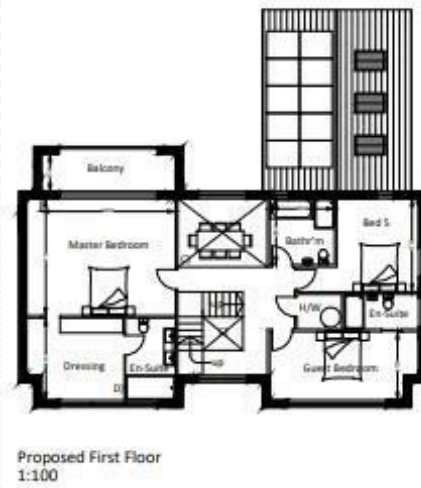
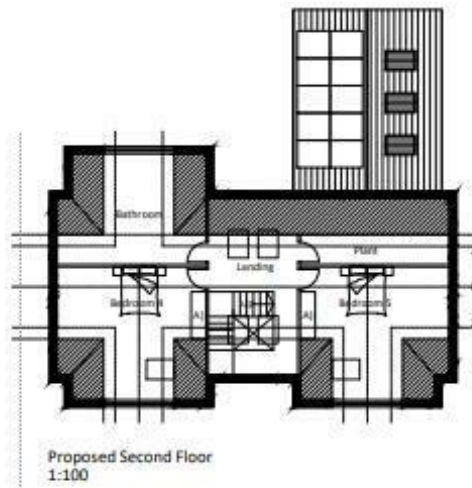
Enclosed Rear Garden Laid To Lawn, Patio With Large Format Porcelain Tiles. Please Note These Are CGI Images Only.

Additional Specification:

Solar Panels, Mitsubishi Air Source Heat Unit, and Wet Under Floor Heating On The Ground Floor, Sonos Sound System, Contemporary German Kitchen With A Large Island, Quooker Tap, Integrated Appliances In the Kitchen. Bathrooms With Walk-in walk-wet rooms And Lusso Stone Products, The Principal Bedroom Has Sliding Doors To A Balcony.




QUADRANT
VILLAGE HOMES





10 Market Square, Bicester, Oxfordshire, OX26 6AD
01869 241166
sales@quadrant-estates.co.uk