



Quadrant Estate Agents

£450,000



## 24, Whitelands Way

Bicester, OX26 1AB

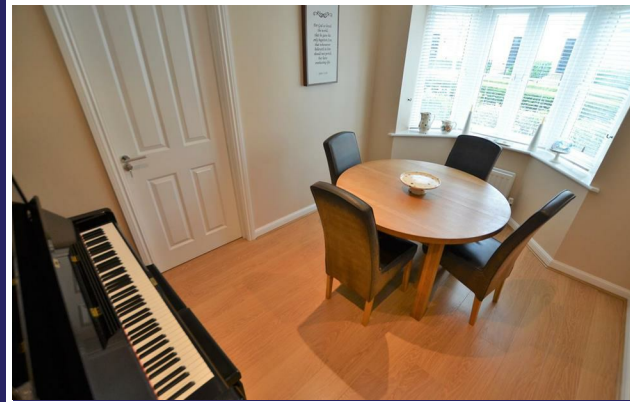
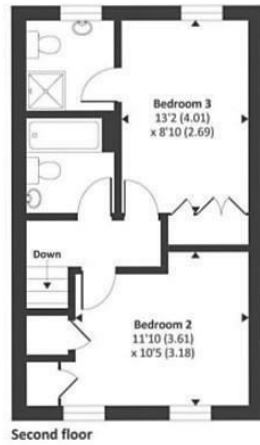
An excellently presented 4 double bedroom 'Bovis' built home with flexible living accommodation to include 3 reception rooms & 3 bathrooms set on the popular Kingsmere development of Bicester with Garage & Parking. Sold with NO ONWARD CHAIN.

[www.quadrant-estates.co.uk](http://www.quadrant-estates.co.uk)

## ACCOMMODATION

- 4 BEDROOMS
- KITCHEN/BREAKFAST ROOM
- LIVING ROOM
- CLOAKROOM
- BATHROOM
- EN-SUITE TO MASTER
- GARAGE WITH PARKING
- ENSUITE TO 2ND BEDROOM
- DINING ROOM
- REAR GARDEN

Section 1



Quadrant Estate Agents

10Market Square, Bicester, Oxfordshire, OX26 6AD

t 01869 241166

sales@quadrant-estates.co.uk

[www.quadrant-estates.co.uk](http://www.quadrant-estates.co.uk)

IMPORTANT: we would like to inform prospective purchasers that these sales particulars have been prepared as a general guide only. A detailed survey has not been carried out, nor the services, appliances and fittings tested. Room sizes should not be relied upon for furnishing purposes and are approximate. If floor plans are included, they are for guidance only and illustration purposes only and may not be to scale. If there are any important matters likely to affect your decision to buy, please contact us before viewing the property.