

Franklyn James



St. Georges Square

, London, E14 8DL

£800,000

A charming 3-bedroom, 2-bathroom duplex apartment that boasts a seamless fusion of modern design and classic elegance. The spacious living area is bathed in natural light and neutral décor. The open floor plan effortlessly connects the living, dining, and kitchen areas, providing an ideal space for gatherings and everyday living. The three bedrooms are generously sized, offering versatility for a growing family, home office space, or guest accommodations. The master bedroom features an En-Suite bathroom, ensuring privacy and comfort.

Situated in St. Georges Square, Narrow Street E14 offers the best of both worlds—an oasis of tranquillity within easy reach of bustling city life. Enjoy the convenience of nearby amenities, including shops, restaurants, parks, and excellent transportation options, making commuting a breeze.

Don't miss your chance to make this exceptional residence your own—schedule a viewing today and envision the endless possibilities of living in this remarkable space.

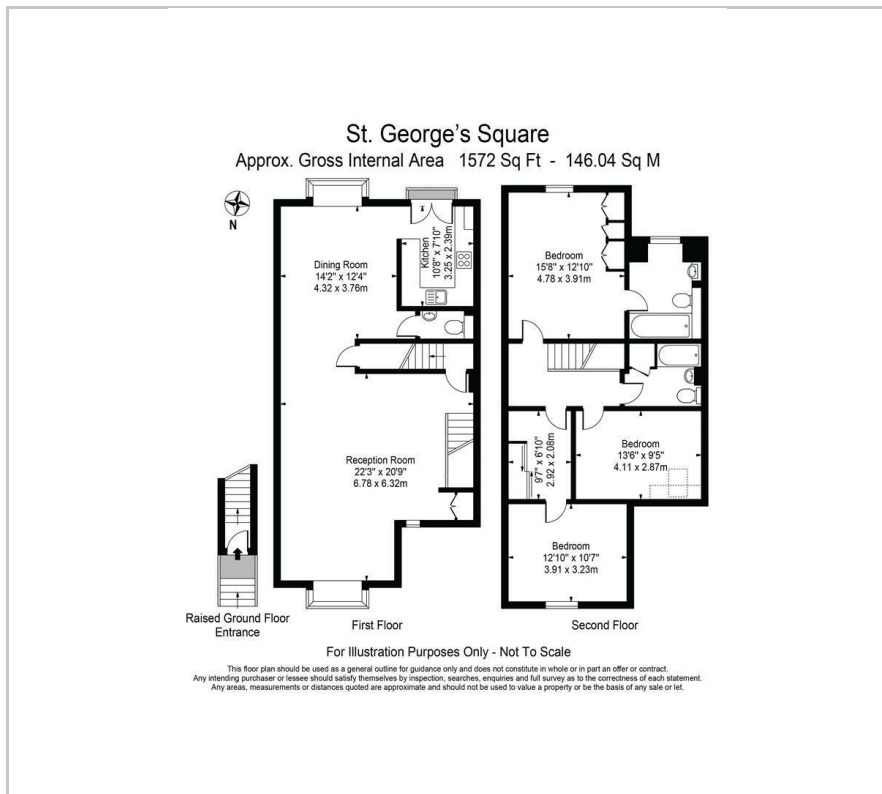
Viewing

Please contact our Limehouse Sales Office on 02077911777 if you wish to arrange a viewing appointment for this property or require further information.

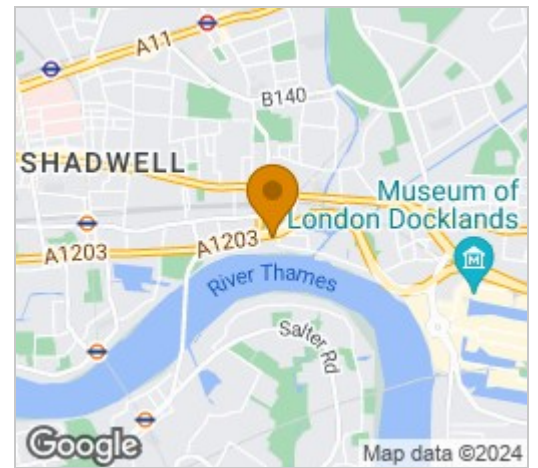
- A 3 bedroom, 2 bathroom duplex apartment
- Generously sized bedrooms
- Many local amenities
- Open plan living/dining area
- Close transportation links to the city
- Private balcony
- Narrow Street location
- Garage



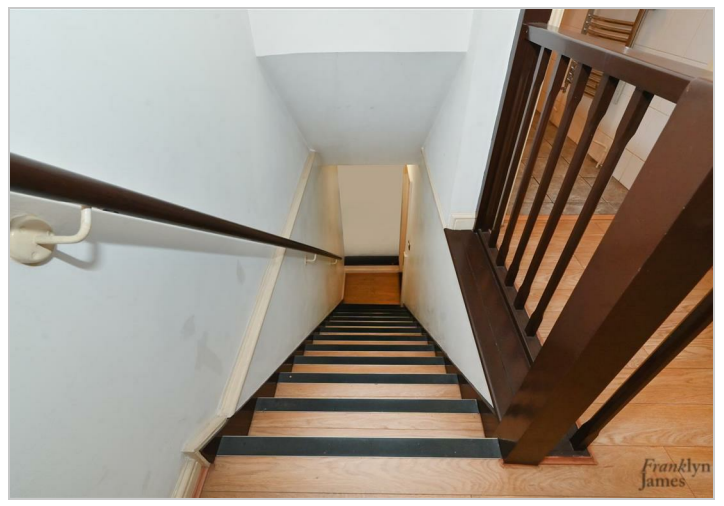
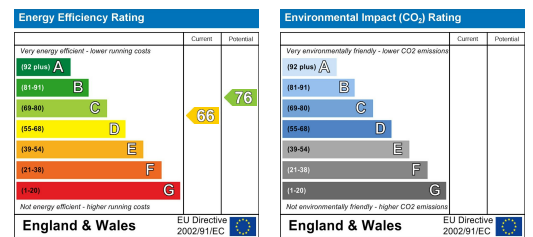
Floor Plan



Area Map



Energy Efficiency Graph



These particulars, whilst believed to be accurate are set out as a general outline only for guidance and do not constitute any part of an offer or contract. Intending purchasers should not rely on them as statements of representation of fact, but must satisfy themselves by inspection or otherwise as to their accuracy. No person in this firm's employment has the authority to make or give any representation or warranty in respect of the property.