

# Franklyn James



## Zenith Building

594 Commercial Road, London, E14 7JR

Asking Price £395,000

**CHAIN FREE** - A lovely South-facing 1 bedroom apartment overlooking the Limehouse Marina. The property offers an efficient layout with spacious rooms & a modern specification throughout. Both rooms offer marina views, as does the balcony which adjoins the reception room.

Zenith Building is a modern block built by Bellway Homes in 2005 and is located on the edge of the Limehouse Marina. Situated within 100m of Limehouse station for easy access to The City & Canary Wharf. Local amenities are located nearby on Commercial Road, & the bars & restaurants of Narrow Street are within easy walking distance. Council Tax band E

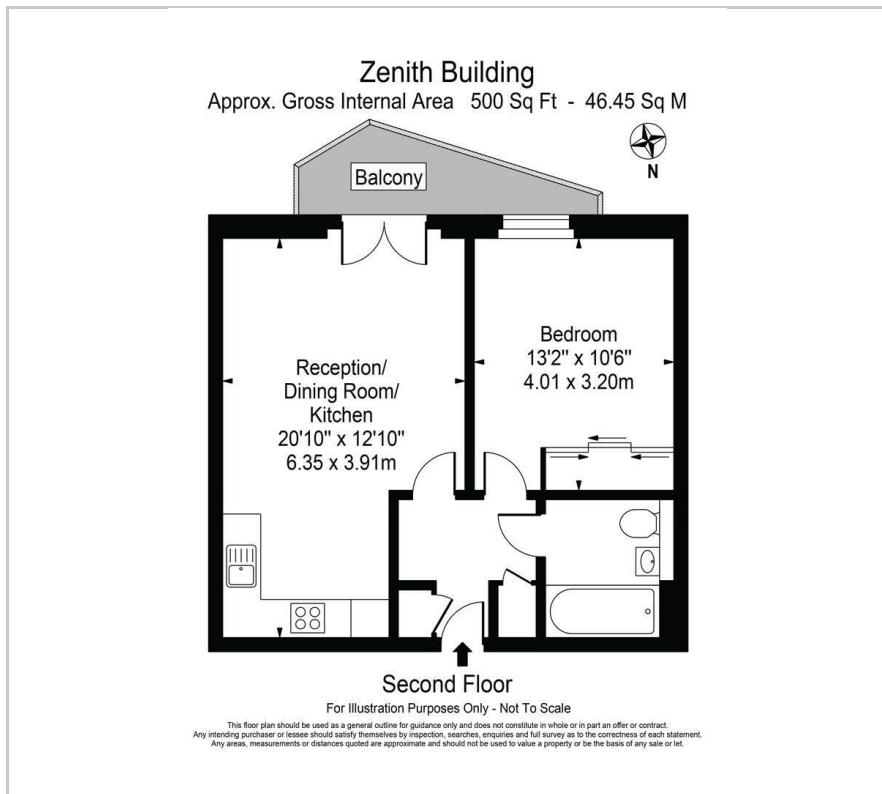
- Gated Secure Development
- Private Balcony facing marina
- EWS1 A1 Rated
- Conveniently-located close to Limehouse station
- Lease length remaining: 183 years
- Service charge per year: £1800
- Ground rent per year: £200
- Easy access to The City & Canary Wharf
- Close to a plethora of local shops amenities
- 492 Sq Ft / 45.71 Sq M

Viewing

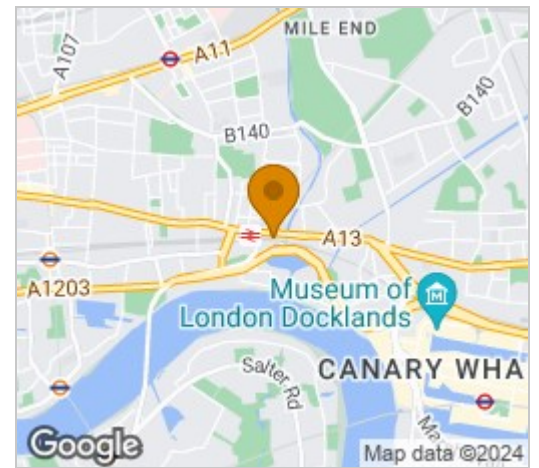
Please contact our Limehouse Sales Office on 02077911777 if you wish to arrange a viewing appointment for this property or require further information.



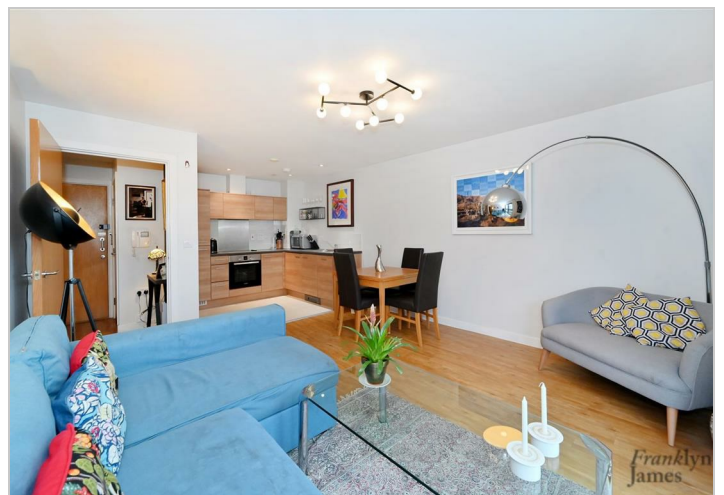
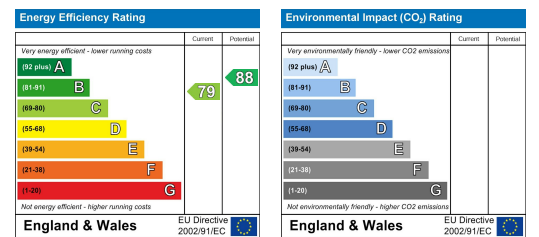
# Floor Plan



# Area Map



# Energy Efficiency Graph



These particulars, whilst believed to be accurate are set out as a general outline only for guidance and do not constitute any part of an offer or contract. Intending purchasers should not rely on them as statements of representation of fact, but must satisfy themselves by inspection or otherwise as to their accuracy. No person in this firm's employment has the authority to make or give any representation or warranty in respect of the property.