

Franklyn James



Basin Approach, Marina Heights, E14 7JA
£2,500 Per Calendar Month



Basin Approach, Marina Heights, E14 7JA

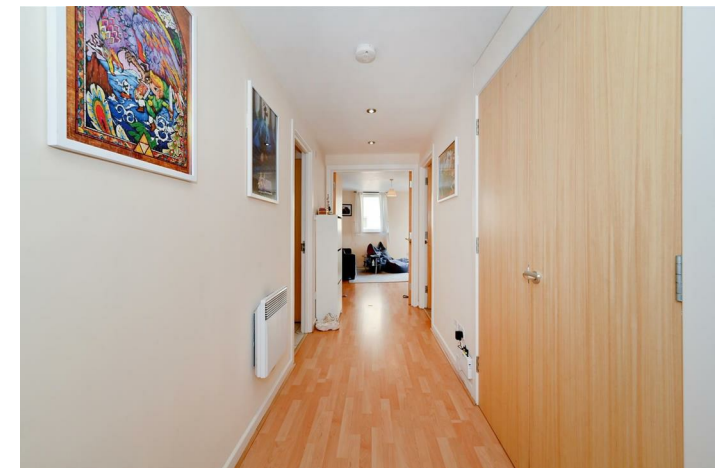
£2,500 Per Calendar Month

This apartment is situated on the third floor and offers two generously-sized double bedrooms, two modern bathrooms, a spacious open plan kitchen and living room, and ample storage space for your convenience. You can also indulge in the stunning views of Limehouse Marina from your very own private balcony.

Nestled in the popular Basin Approach, the development is conveniently located near an array of shops and restaurants. Commuting to the City and Canary Wharf is a breeze with Limehouse DLR just a short walk away, making it ideal for busy professionals. For added peace of mind, secure parking is included.

Description

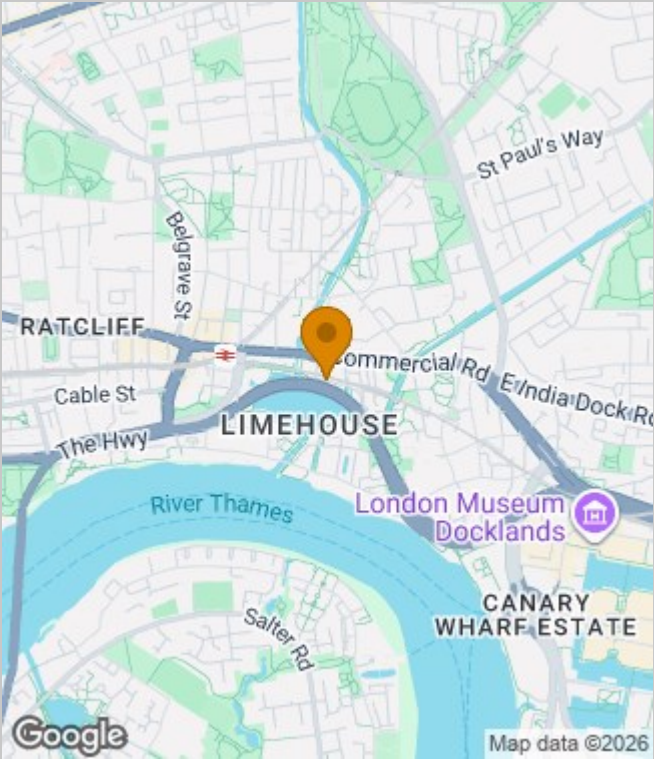
- Fantastic location
- Furnished
- Spacious two bedroom apartment
- Two bathrooms
- Private balcony with marina views
- Abundance of natural light
- Secure parking available
- Lift access
- Close to Limehouse Station
- Easy commute to Canary Wharf



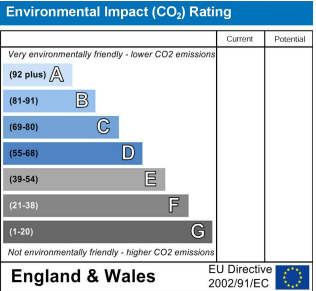
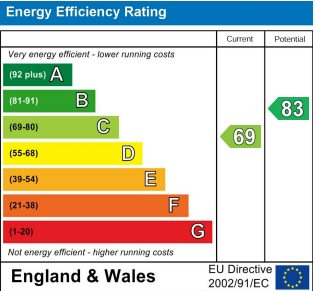
Furnished
Council Tax Band: F
Available: 14th January 2026



Area Map



Energy Performance Graph



These particulars, whilst believed to be accurate are set out as a general outline only for guidance and do not constitute any part of an offer or contract. Intending purchasers should not rely on them as statements of representation of fact, but must satisfy themselves by inspection or otherwise as to their accuracy. No person in this firms employment has the authority to make or give any representation or warranty in respect of the property.

Franklyn
James

29 Narrow Street, London, E14 8DP
Tel: 02077911777 Email: lettings@franklynjames.co.uk <https://www.franklynjames.co.uk>