

# *Franklyn* James



Fairlead House, Cassilis Road, E14 9LB

£2,200 Per Calendar Month



Fairlead House, Cassilis Road, E14 9LB

**£2,200 Per Calendar Month**

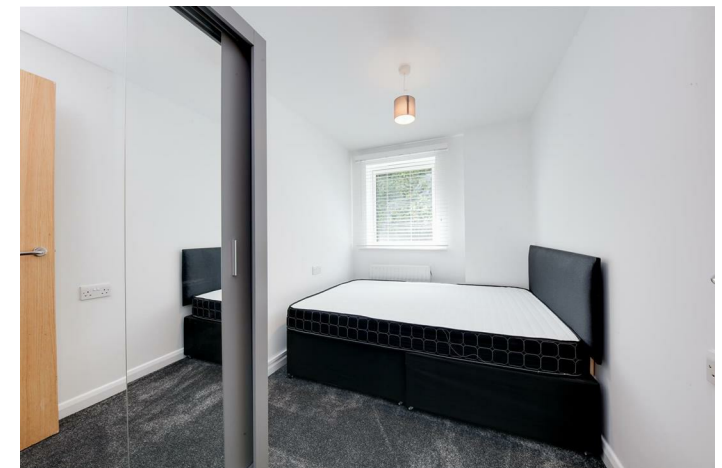
This impressive two-bedroom ground floor apartment is within the desirable Canary Central development in South Quay. Upon entering you are greeted by a spacious hallway leading to a contemporary kitchen equipped with integrated appliances. The apartment boasts a generous lounge, perfect for entertaining, a well-appointed master bedroom, a second comfortable double bedroom, and a stylishly maintained family bathroom.

Residents can enjoy the amenities at South Quay Plaza, while Canary Wharf's vibrant selection of bars, restaurants, and retail stores are just moments away. With South Quay DLR station nearby and the Jubilee line at Canary Wharf, this apartment offers superb connectivity across London.



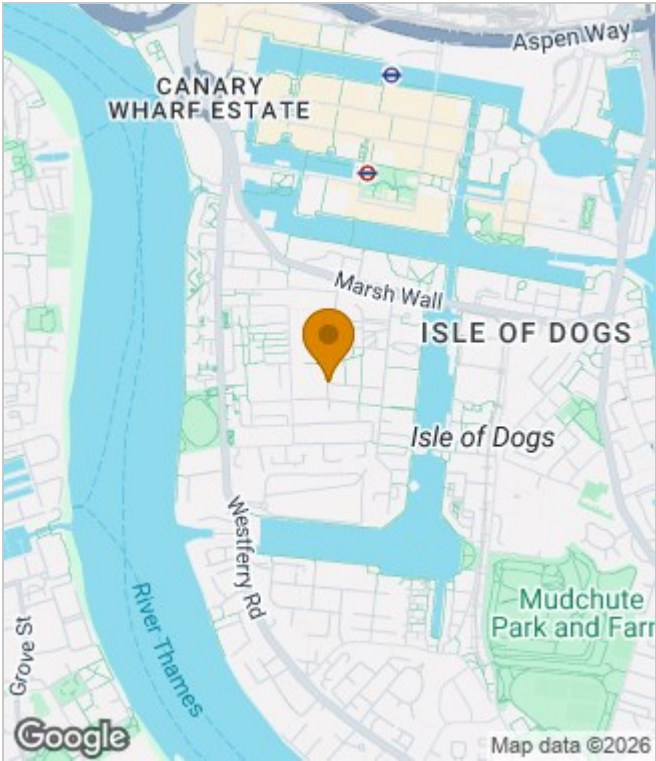
## Description

- Furnished
- Recently renovated
- Impressive two bedroom ground floor apartment
- Prime South Quay location combining modern living with city convenience.
- Modern kitchen
- Abundance of natural light
- Ample storage
- Perfect for a professional couple or sharers alike
- Moments from Canary Wharf's bars, restaurants, and shopping.
- Excellent transport links via South Quay DLR and Canary Wharf Jubilee Line.

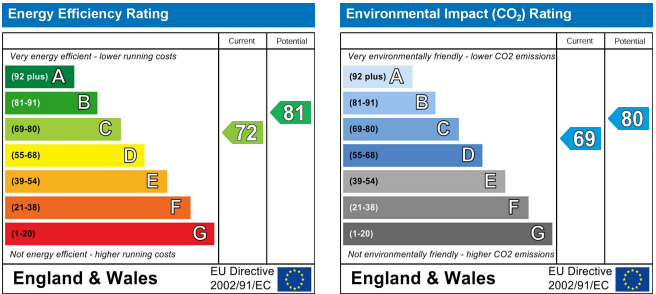


Furnished  
Council Tax Band: D  
Available: 4th February 2026

Area Map



Energy Performance Graph



These particulars, whilst believed to be accurate are set out as a general outline only for guidance and do not constitute any part of an offer or contract. Intending purchasers should not rely on them as statements of representation of fact, but must satisfy themselves by inspection or otherwise as to their accuracy. No person in this firms employment has the authority to make or give any representation or warranty in respect of the property.