

Franklyn James



69 Narrow Street,

London, E14 8EJ

Asking Price £520,000

Ideally located between two DLR stations, Westferry and Limehouse, Lamb Court offers an exceptional position beside the Thames Path with stunning views across the Canary Central landscape and partial views of the River Thames.

Offered chain free, this beautifully presented property is ready to move into, requiring no further work. The interior has been finished to an outstanding standard, featuring luxurious bathrooms with elegant marble detailing, spacious bedroom featuring a walk-in wardrobe and a superbly designed kitchen equipped with Miele appliances and a Bertazzoni range cooker.

Additional benefits include a share of freehold, secure gated parking and access to a communal garden.

Lamb Court combines contemporary living with an enviable location, making it an ideal home or investment opportunity.

- Share of freehold
- Fantastic views
- Secure gated parking
- Close to DLR stations
- Chain free

Viewing

Please contact our Limehouse Sales Office on 02077911777 if you wish to arrange a viewing appointment for this property or require further information.



2



2

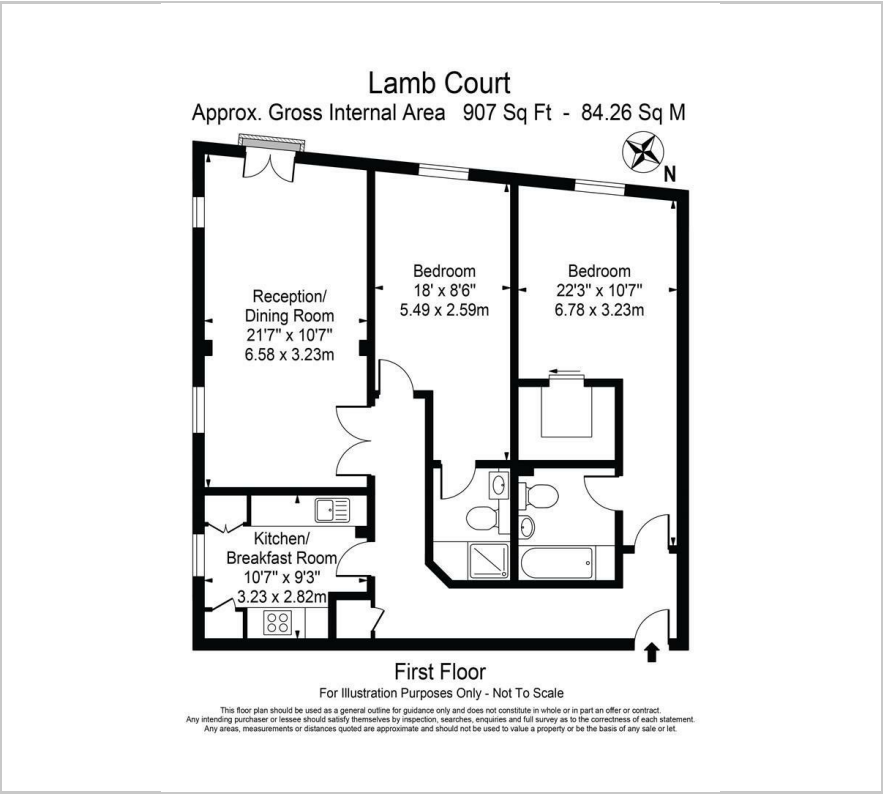


1



C

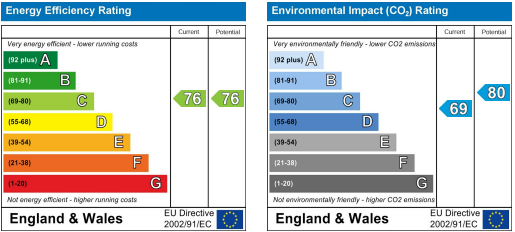
Floor Plan



Area Map



Energy Efficiency Graph



These particulars, whilst believed to be accurate are set out as a general outline only for guidance and do not constitute any part of an offer or contract. Intending purchasers should not rely on them as statements of representation of fact, but must satisfy themselves by inspection or otherwise as to their accuracy. No person in this firm's employment has the authority to make or give any representation or warranty in respect of the property.