

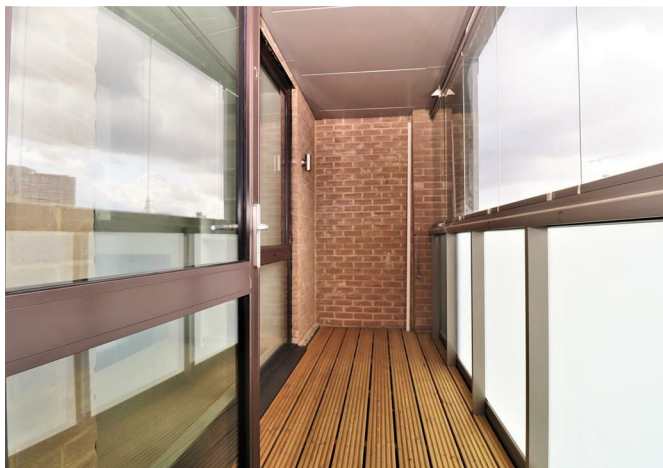
# *Franklyn James*



Lighterman Point, New Village Avenue, E14 0NH

£1,850 Per Calendar Month





## Lighterman Point, New Village Avenue, E14 0NH

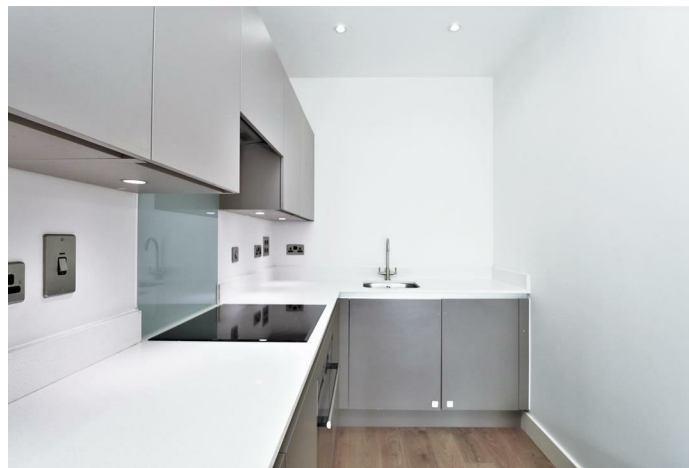
**£1,850 Per Calendar Month**

A bright and modern one bedroom apartment located in Aberfeldy Village which has been thoughtfully designed with contemporary features. The open-plan living room and kitchen boast solid wood flooring and a fully fitted kitchen equipped with modern appliances. The property further benefits from a spacious bedroom with built in storage, further storage in the hallway, washer/dryer, dishwasher, a modern and spacious bathroom, and a large private balcony.

Residents of this development enjoy various amenities, including a 24-hour concierge, gym, courtyard garden, work hub, and lounge facilities. The location is highly convenient, situated near Blackwall DLR and Canning Town Underground Station.

## Description

- Spacious one bedroom apartment
- Offered furnished
- Large, private balcony
- Residents gym
- Concierge
- Excellent decorative order throughout
- Modern development
- Available now
- Close to East India DLR
- Open plan kitchen and living room

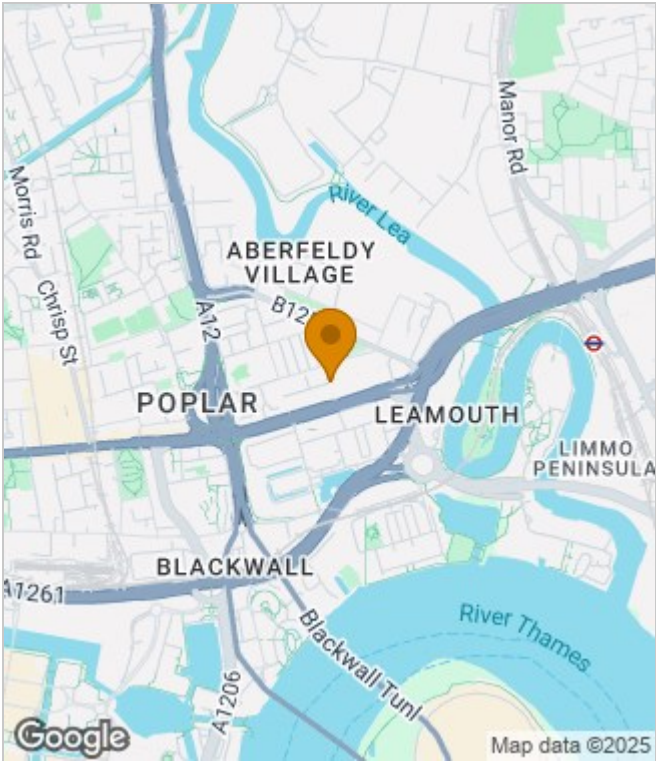


Furnished

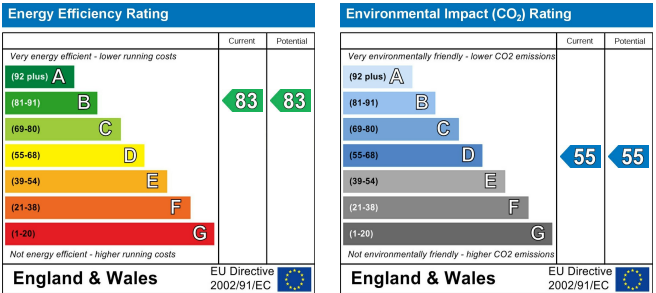
Council Tax Band: C

Available: 18th August 2025

Area Map



Energy Performance Graph



These particulars, whilst believed to be accurate are set out as a general outline only for guidance and do not constitute any part of an offer or contract. Intending purchasers should not rely on them as statements of representation of fact, but must satisfy themselves by inspection or otherwise as to their accuracy. No person in this firms employment has the authority to make or give any representation or warranty in respect of the property.



29 Narrow Street, London, E14 8DP  
Tel: 02077911777 Email: [lettings@franklynjames.co.uk](mailto:lettings@franklynjames.co.uk) <https://www.franklynjames.co.uk>