

Franklyn James

Brightlingsea Place, Limehouse, E14 8DB

£4,500 Per Calendar Month





Brightlingsea Place, Limehouse, E14 8DB

£4,500 Per Calendar Month

AVAILABLE FOR SHARERS Arranged over four floors and benefiting from over 1700 square feet of living space, this charming four double bedroom town house in one of Limehouse's finest and sought after developments. Homes of this size are rarely available in Limehouse and this stylish and modern house has been extensively remodeled and is presented in immaculate internal order. The kitchen boast of view of immaculate internal gardens. The property also benefits from underfloor heating and air conditioning.

Brightlingsea Place is situated in the heart of Limehouse, just off Narrow Street with its selection of bars, pubs, restaurants and shops. This secure development is a short distance from both Limehouse and Westferry DLR station and Canary Wharf itself.

Parking available at additional costs.

Description

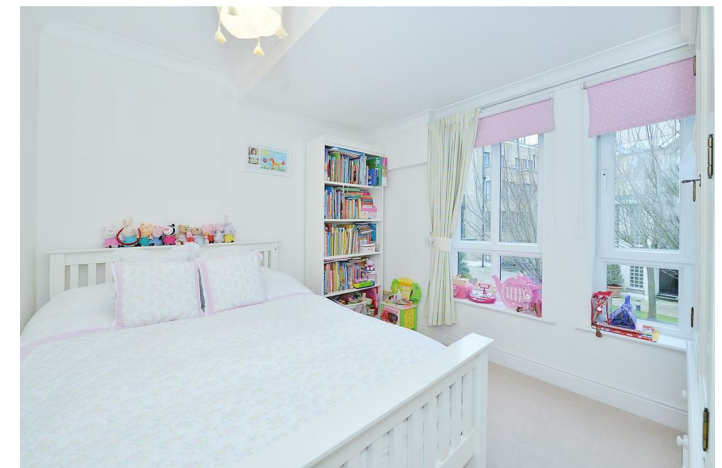
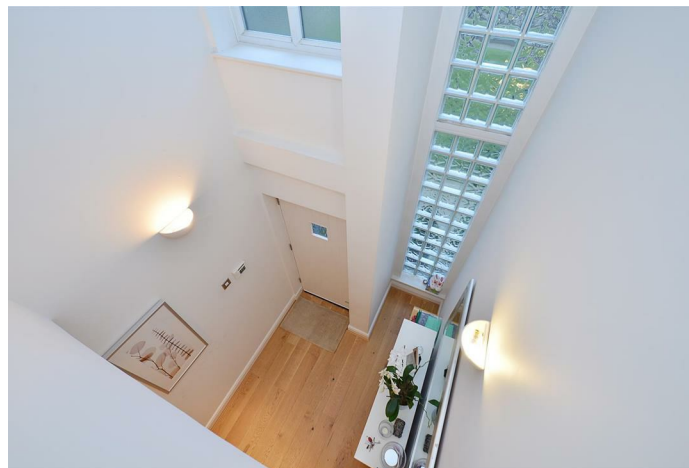
- Available for sharers
- Boasting over 1700 square feet of living space
- Four double bedroom town house
- Three luxurious bathrooms and additional cloakroom
- Three balconies
- Air conditioning
- Underfloor heating
- Well-maintained communal gardens
- Short distance from both Limehouse and Westferry DLR
- Easy access into Canary Wharf and the City



Furnished

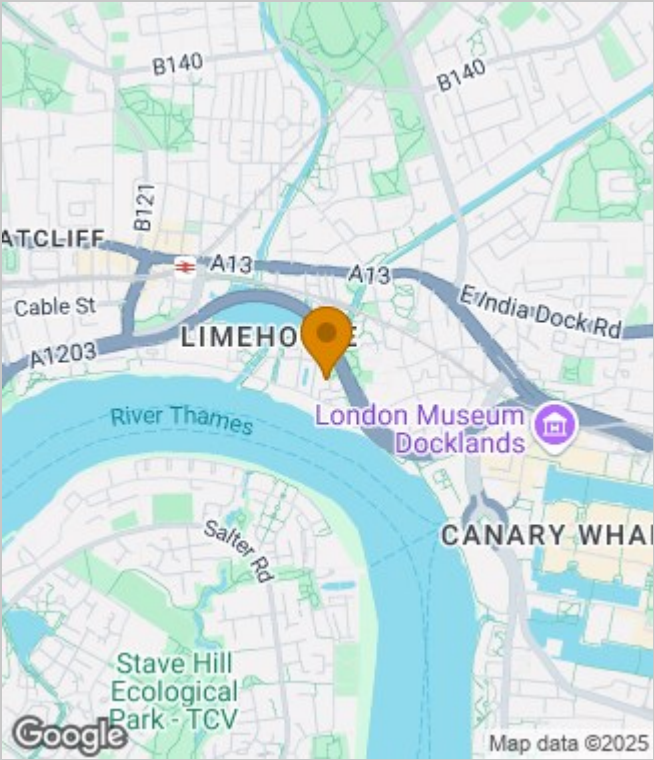
Council Tax Band: E

Available: 13th August 2025

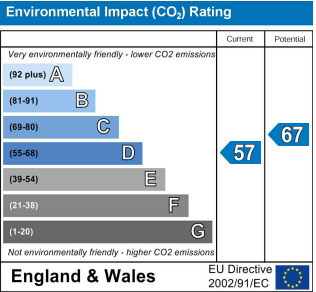
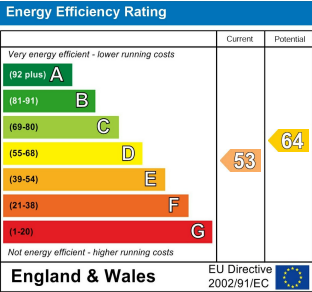




Area Map



Energy Performance Graph



These particulars, whilst believed to be accurate are set out as a general outline only for guidance and do not constitute any part of an offer or contract. Intending purchasers should not rely on them as statements of representation of fact, but must satisfy themselves by inspection or otherwise as to their accuracy. No person in this firms employment has the authority to make or give any representation or warranty in respect of the property.

Franklyn
James

29 Narrow Street, London, E14 8DP
Tel: 02077911777 Email: lettings@franklynjames.co.uk <https://www.franklynjames.co.uk>