

# Franklyn James



## 51 Narrow Street

London, E14 8DN

Offers In Excess Of £600,000

Situated just a minute's walk from Limehouse Station and next to the scenic Limehouse Basin, this outstanding two-bedroom apartment is located on the fourth floor of the highly sought-after Mosaic Development. This popular development is well known for its impressive communal amenities, which include meeting rooms, shared workspaces and beautifully maintained gardens. Residents also benefit from the support of friendly and helpful on-site concierges. With so much on offer, it is easy to see why so many people choose to stay within the development long term.

The apartment itself is presented in immaculate condition. engineered wood flooring and a recently renovated kitchen create a fresh and contemporary feel, giving the impression of a brand new home.

Additional features include underfloor heating in the bathrooms and a private balcony offering views of the Shard. A MegaFlow water heating system has been installed, delivering excellent energy efficiency along with a generous and reliable supply of hot water to both bathrooms, even when used simultaneously.

Offered for sale with no onward chain.

- Chain free
- Two spacious bedrooms
- Two bathrooms with underfloor heating
- Fourth floor
- Concierge and communal gardens
- Impeccable condition

### Viewing

Please contact our Limehouse Sales Office on 02077911777 if you wish to arrange a viewing appointment for this property or require further information.

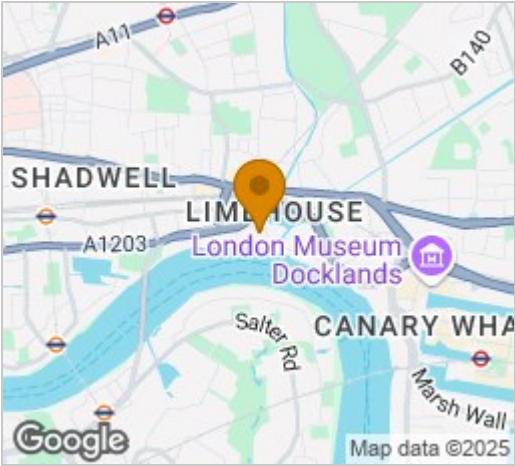




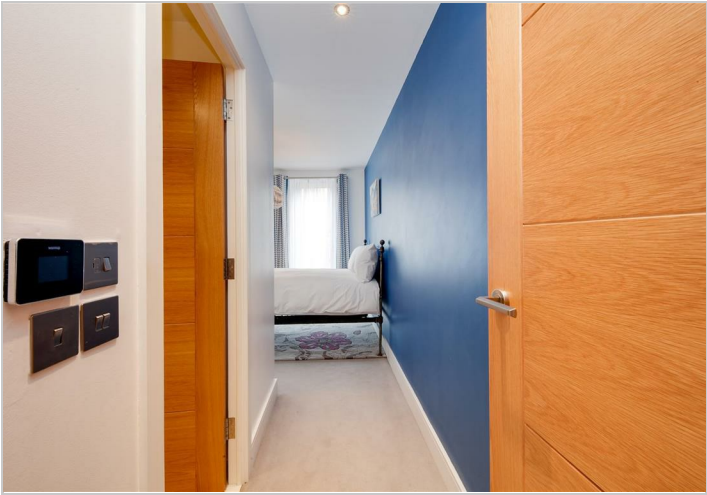
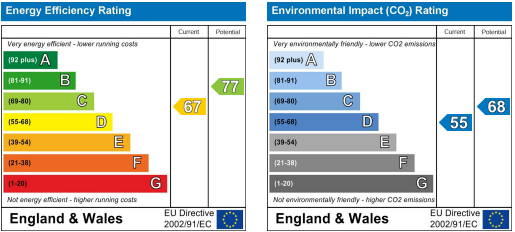
Floor Plan



Area Map



Energy Efficiency Graph



These particulars, whilst believed to be accurate are set out as a general outline only for guidance and do not constitute any part of an offer or contract. Intending purchasers should not rely on them as statements of representation of fact, but must satisfy themselves by inspection or otherwise as to their accuracy. No person in this firm's employment has the authority to make or give any representation or warranty in respect of the property.