

# Franklyn James



## 2 Premiere Place

, London, E14 8SB

Asking Price £345,000

**CHAIN FREE** - Located within the Premiere Place development is this airy and bright one bedroom apartment. Situated just a stone's throw away from Canary Wharf and conveniently close to Westferry DLR station, this prime location ensures easy access to transport links and vibrant city life.

The accommodation briefly comprises a spacious reception room, a double bedroom, fully fitted open plan kitchen providing ample space for cooking whilst entertaining and a bathroom room with separate shower

Premiere Place offers more than just a beautiful living space. The development boasts an on-site porter, ensuring security and peace of mind.

- Chain free
- Onsite porter
- Ideal first time buy
- Prime location
- Close to Westferry DLR & Canary Wharf Station
- Open plan
- Bright and spacious living accommodation

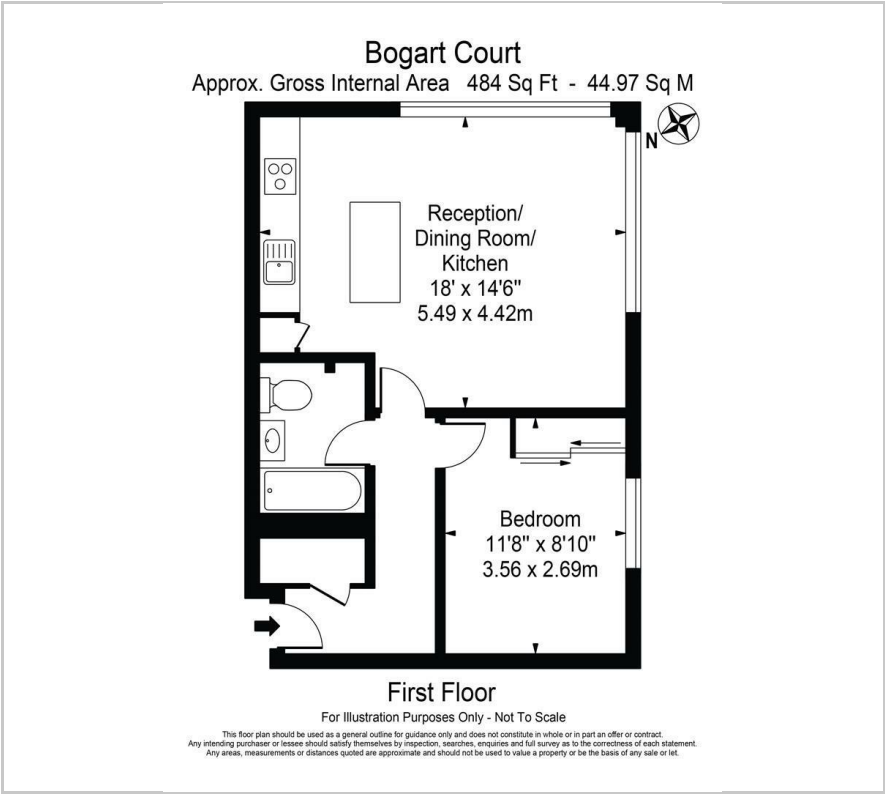
### Viewing

Please contact our Limehouse Sales Office on 02077911777 if you wish to arrange a viewing appointment for this property or require further information.

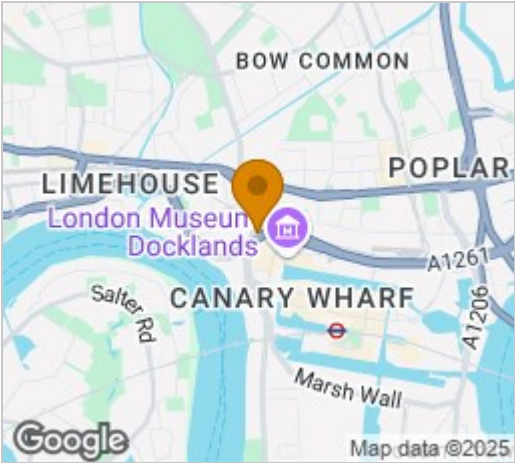




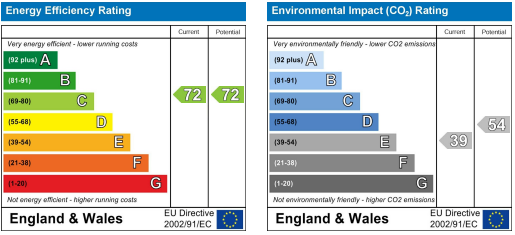
Floor Plan



Area Map



Energy Efficiency Graph



These particulars, whilst believed to be accurate are set out as a general outline only for guidance and do not constitute any part of an offer or contract. Intending purchasers should not rely on them as statements of representation of fact, but must satisfy themselves by inspection or otherwise as to their accuracy. No person in this firms employment has the authority to make or give any representation or warranty in respect of the property.