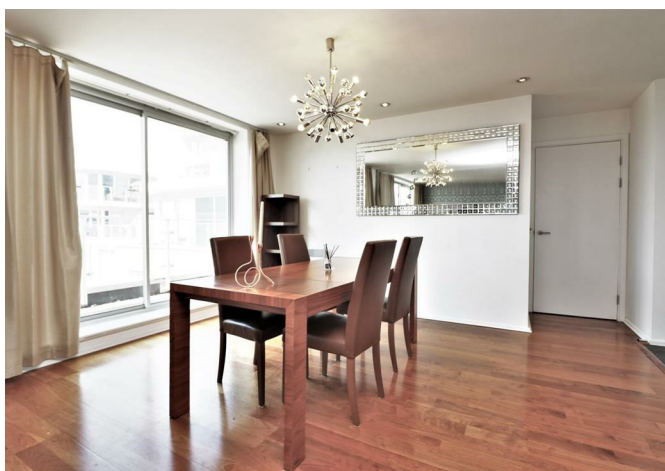


Franklyn James



Adriatic Building, 51 Narrow Street, E14 8DN

£2,300 Per Calendar Month



Adriatic Building, 51 Narrow Street, E14 8DN

£2,300 Per Calendar Month

An absolutely stunning, fifth floor apartment located in the extremely desirable Mosaic development on Narrow Street. The property comprises two double bedrooms, the master bedroom having a walk in wardrobe and an en suite bathroom, an additional family shower room with a spacious open-plan kitchen/reception room with floor to ceiling windows and access onto a private balcony spanning the whole front of the property. Additional features include ample storage, covered allocated parking and 24 hour concierge. Transport links include both Limehouse DLR and C2C stations and the Thames clipper service, which provide excellent links into both central London and Canary Wharf.

Description

- Two bedrooms
- Two bathrooms
- Secure parking
- Large terrace
- Furnished
- River views

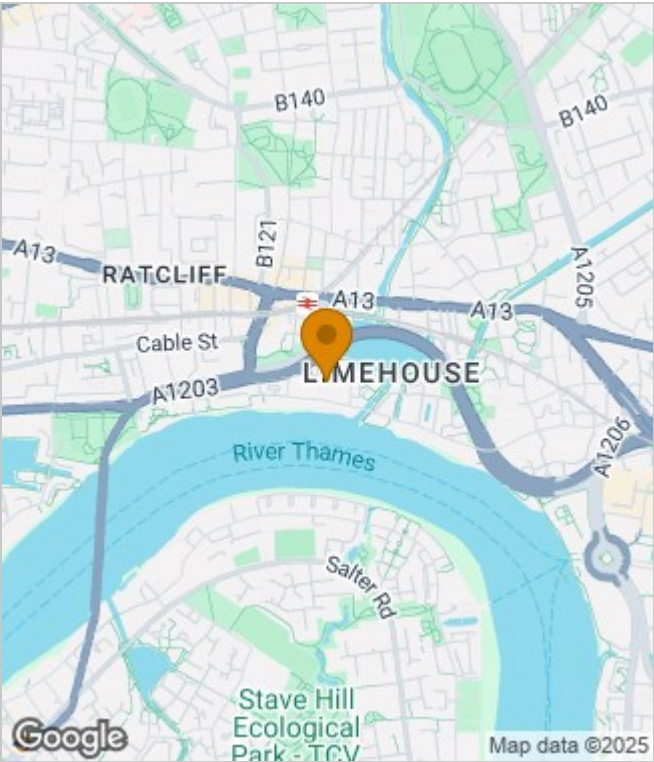


Furnished
Council Tax Band: F
Available: 14th July 2021

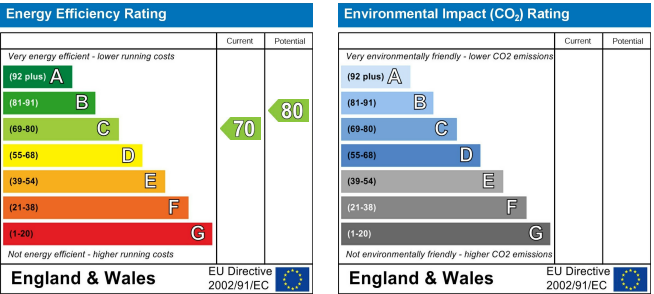




Area Map



Energy Performance Graph



These particulars, whilst believed to be accurate are set out as a general outline only for guidance and do not constitute any part of an offer or contract. Intending purchasers should not rely on them as statements of representation of fact, but must satisfy themselves by inspection or otherwise as to their accuracy. No person in this firms employment has the authority to make or give any representation or warranty in respect of the property.

**Franklyn
James**

29 Narrow Street, London, E14 8DP
Tel: 02077911777 Email: lettings@franklynjames.co.uk <https://www.franklynjames.co.uk>