

Franklyn James



350 The Highway

, London, E1W 3HU

Asking Price £600,000

This stunning loft-style duplex apartment is set within a beautifully restored warehouse, offering a unique blend of historic charm and contemporary living. Boasting vaulted ceilings, exposed beams, and a spacious open-plan reception, this home provides the perfect backdrop for entertaining.

The apartment features two generously sized double bedrooms, secure off-street parking, and a concierge service for ultimate convenience. Residents will also enjoy a fantastic range of exclusive on-site amenities, including a fully-equipped gym, swimming pool, and jacuzzi – perfect for unwinding after a busy day.

Situated in a gated development on the picturesque banks of the River Thames, this property is ideal for Canary Wharf and City commuters. You'll also find a vibrant selection of local pubs, restaurants, and cafes on Narrow Street and in Wapping, with the world-class shopping and leisure options of Canary Wharf just a short distance away. An exceptional home in an unbeatable location!

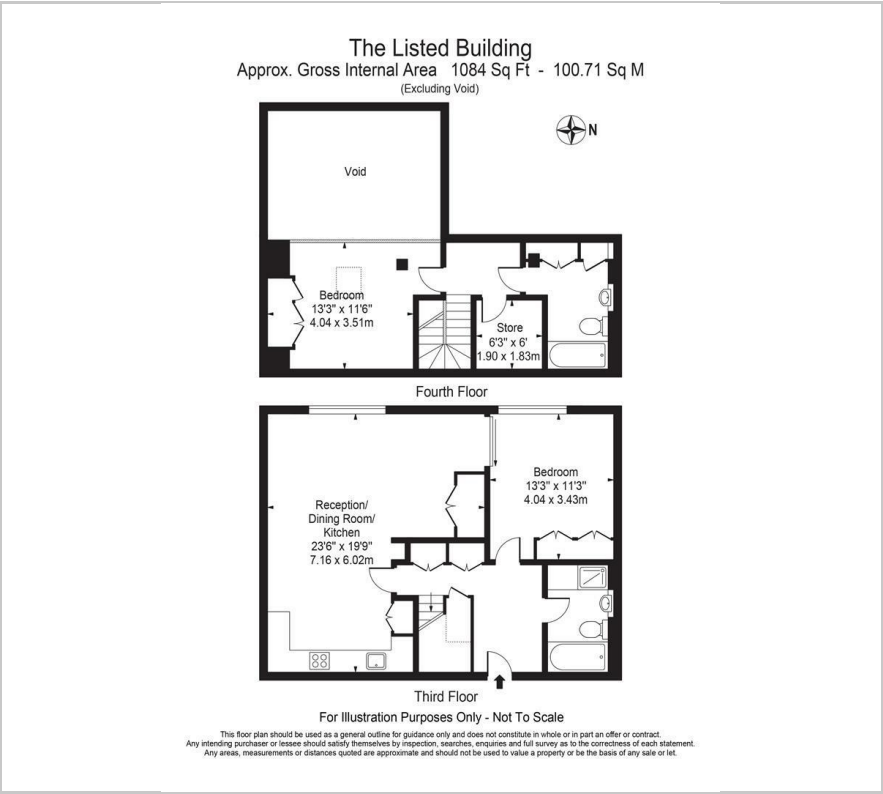
- Excellent Location
- Duplex Apartment
- Furnished
- Gym Facilities
- Secure Gated Development
- Spacious Throughout

Viewing

Please contact our Limehouse Sales Office on 02077911777 if you wish to arrange a viewing appointment for this property or require further information.



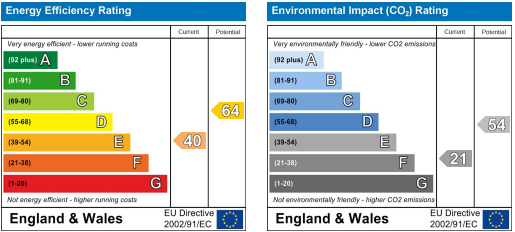
Floor Plan



Area Map



Energy Efficiency Graph



These particulars, whilst believed to be accurate are set out as a general outline only for guidance and do not constitute any part of an offer or contract. Intending purchasers should not rely on them as statements of representation of fact, but must satisfy themselves by inspection or otherwise as to their accuracy. No person in this firm's employment has the authority to make or give any representation or warranty in respect of the property.