

Franklyn James



Keeper Wharf

12 Narrow Street, London, E14 8DH

£4,500 Per Calendar Month

****Only suitable for a family or two separate sharers**** Franklyn James is delighted to offer you the opportunity to purchase this luxurious split level penthouse. Features are to include a welcoming hallway, three double bedrooms, three luxury bathrooms and a modern fully fitted kitchen. There is a large reception room with doors leading to a private balcony from which there is stunning direct river views to be admired. As well as all of these fabulous features, there is additional office space and a utility room plus a further two private terraces.

Residents parking and a concierge service can also be enjoyed as part of residing in this development. The penthouse is ideally located for Narrow Street, its many restaurants and bars and Limehouse DLR station which provides excellent transport links into the City and Canary Wharf.

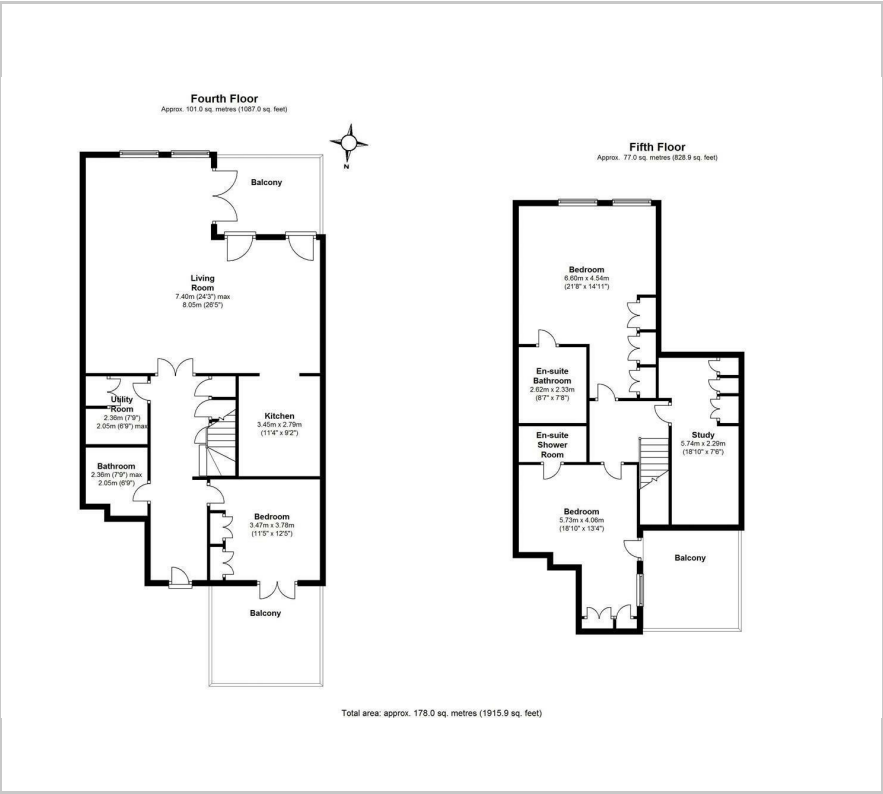
- Three double bedrooms
- Three luxury bathrooms
- Modern fitted kitchen
- Direct river views
- Balcony and two terraces
- Property is unfurnished
- Secure parking included
- Moments away from Limehouse DLR
- Situated near Limehouse Marina
- Close to Canary Wharf

Viewing

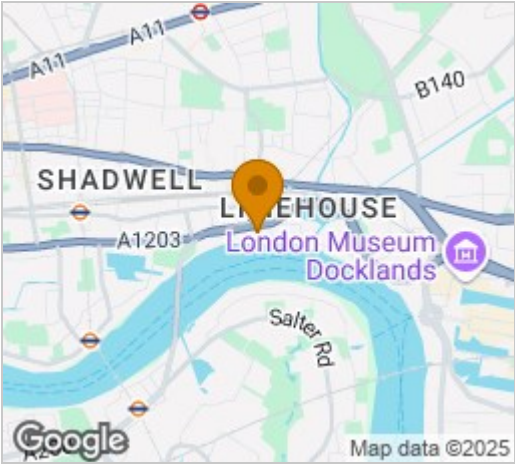
Please contact our Limehouse Lettings Office on 02077911777 if you wish to arrange a viewing appointment for this property or require further information.



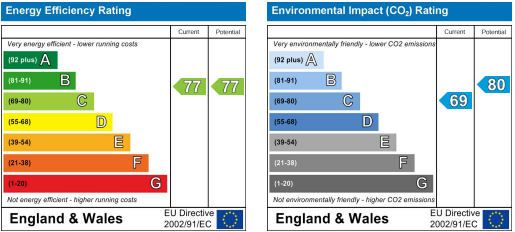
Floor Plan



Area Map



Energy Efficiency Graph



These particulars, whilst believed to be accurate are set out as a general outline only for guidance and do not constitute any part of an offer or contract. Intending purchasers should not rely on them as statements of representation of fact, but must satisfy themselves by inspection or otherwise as to their accuracy. No person in this firms employment has the authority to make or give any representation or warranty in respect of the property.