

# Franklyn James



## 3 Ratcliffe Cross Street

, London, E1 0FD

Asking Price £429,950

A beautifully presented modern one-bedroom apartment in excellent condition in the heart of East London. Sixth floor of a seven floor building. Property briefly comprises, open plan lounge kitchen, which has a range of integrated Siemens appliances, access to large balcony, floor to ceiling windows, contemporary bathroom, a large double bedroom with a mirrored built-in wardrobe and a spacious storage room.

With its convenient location, this apartment offers easy access to local amenities and shops. The property is ideal for young professionals or couples looking for a secure and well-maintained home in a bustling urban setting.

This property offers excellent transportation links. Just a short distance away from Limehouse DLR station, offering easy access to Canary Wharf, the City of London and Tower Bridge.

Short walk away from Limehouse Marina and access to Thames Path walks leading to Wapping, St Katharine Docks Marina and Tower Bridge.

- Private Balcony
- Secure Entry Phone System
- Open Plan Reception
- Integrated Appliances
- Ideal first buy / Investment
- Long lease
- Prime location

### Viewing

Please contact our Limehouse Sales Office on 02077911777 if you wish to arrange a viewing appointment for this property or require further information.



1



1



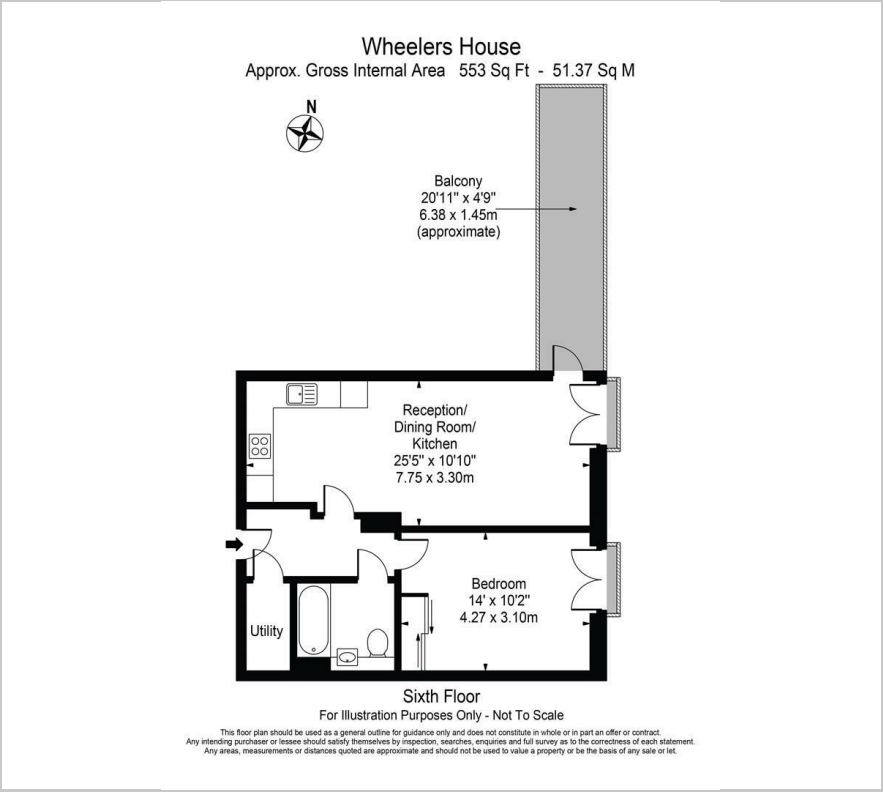
1



B



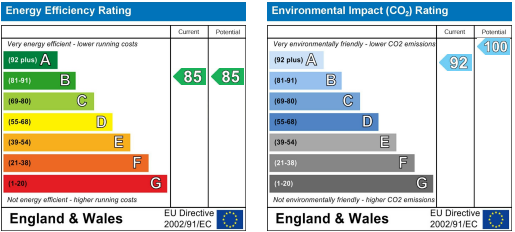
Floor Plan



Area Map



Energy Efficiency Graph



These particulars, whilst believed to be accurate are set out as a general outline only for guidance and do not constitute any part of an offer or contract. Intending purchasers should not rely on them as statements of representation of fact, but must satisfy themselves by inspection or otherwise as to their accuracy. No person in this firm's employment has the authority to make or give any representation or warranty in respect of the property.