

Franklyn James



592 Commercial Road

, London, E14 7JR

Offers In Excess Of £525,000

CHAIN FREE A contemporary two-bedroom apartment boasting approximately 845 square feet of living space within the sought-after Zenith Building. Situated on the 5th floor, accessible via lift, this property offers an inviting entrance hall leading to an open-plan lounge/diner. Double doors to balcony with picturesque views over the marina fitted kitchen, complete with integrated appliances, enhances convenience.

Two generously sized double bedrooms provide comfortable living, with the master bedroom featuring an en suite for added luxury. The family bathroom, equipped with a white suite and a shower over the bath, ensures convenience for residents. Additionally, residents benefit from allocated parking in the underground car park.

Moments from the River Thames with breathtaking views of the City. A short journey to green and leafy Mile End park compliments the vibrancy of this exciting East End locale with extraordinarily convenient transport links from Limehouse DLR station.

- Spacious open plan reception/kitchen
- Lift access
- Well-presented bathroom
- Extensive built in storage
- Private balcony
- Breathtaking views of Limehouse marina
- Moments from Limehouse DLR station
- 845 sq living space

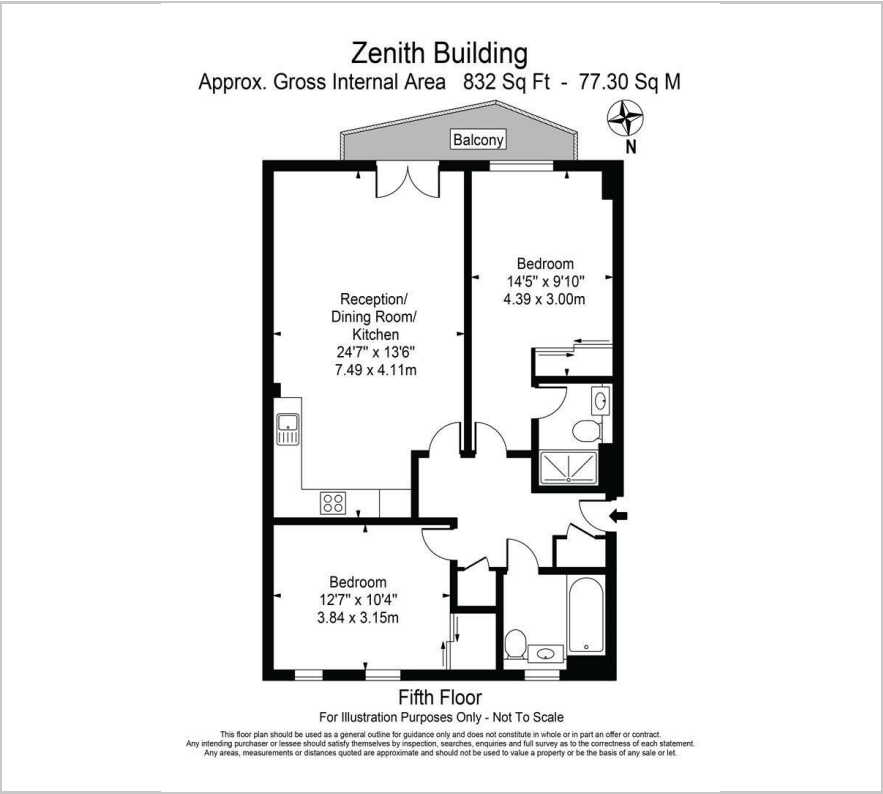
Viewing

Please contact our Limehouse Sales Office on 02077911777 if you wish to arrange a viewing appointment for this property or require further information.



Franklyn
James

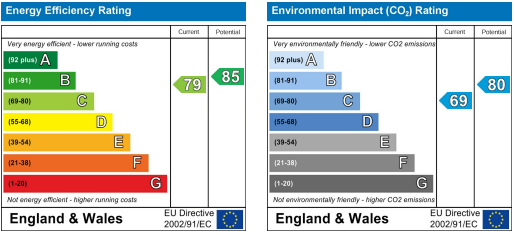
Floor Plan



Area Map



Energy Efficiency Graph



These particulars, whilst believed to be accurate are set out as a general outline only for guidance and do not constitute any part of an offer or contract. Intending purchasers should not rely on them as statements of representation of fact, but must satisfy themselves by inspection or otherwise as to their accuracy. No person in this firm's employment has the authority to make or give any representation or warranty in respect of the property.