

Franklyn James



Barrier Point Road

, London, E16 2SE

Asking Price £475,000

Offered to the market with no onward chain in the prestigious Barrier Point development, The accommodation comprises entrance lobby with lift, entrance hall, wc, open-plan reception/dining room with access onto a large terrace, separate modern kitchen with storeroom and two large double bedrooms.

The master bedroom has an en suite shower room, whilst the second double bedroom has a balcony. Both bedrooms benefit from fitted wardrobes.

The apartment comes with one underground allocated parking space and parking in the external car park.

The development offers a resident's gym and concierge service. located in one of E16's most desirable developments next to the beautiful Thames Barrier Park which can be accessed directly from the development. Pontoon Dock DLR station is just moments away, providing links to the City, Canary Wharf, Westfield shopping centre in Stratford, Stratford International railway station and London City Airport.

- Chain Free
- Two bedrooms
- Next to Barrier Park and the River Thames
- Spacious living accommodation
- Allocated parking
- Prime location
- Ideal first time buy

Viewing

Please contact our Limehouse Sales Office on 02077911777 if you wish to arrange a viewing appointment for this property or require further information.



2



2

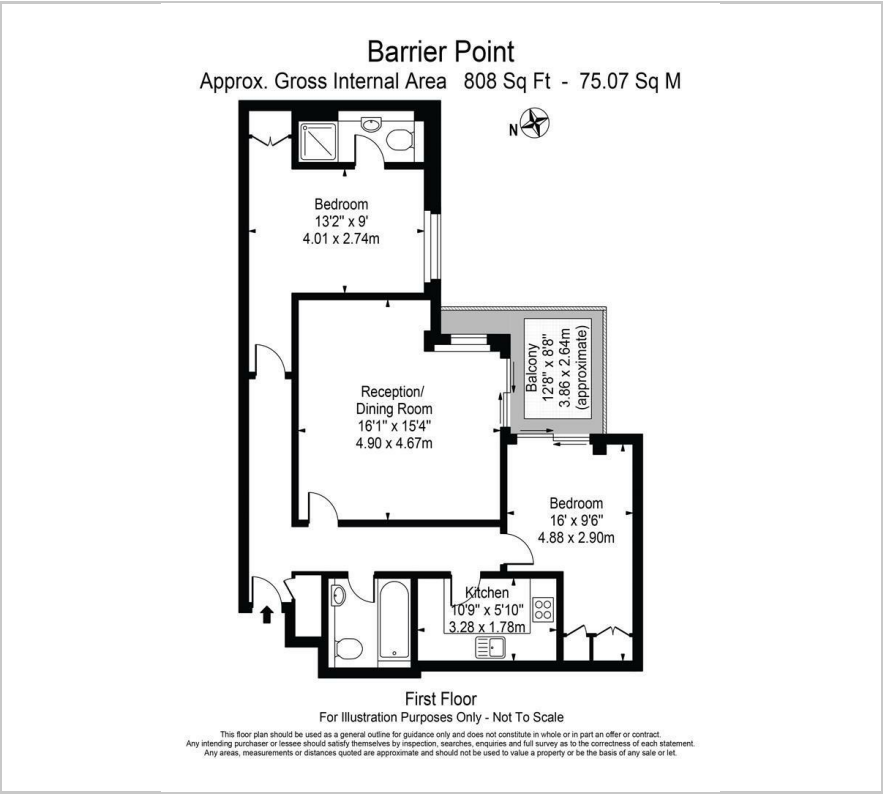


1



C

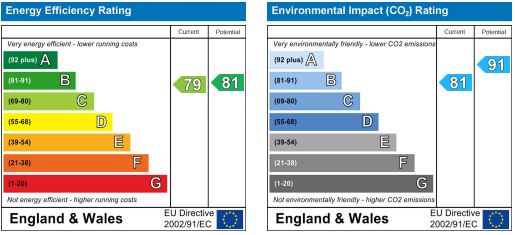
Floor Plan



Area Map



Energy Efficiency Graph



These particulars, whilst believed to be accurate are set out as a general outline only for guidance and do not constitute any part of an offer or contract. Intending purchasers should not rely on them as statements of representation of fact, but must satisfy themselves by inspection or otherwise as to their accuracy. No person in this firms employment has the authority to make or give any representation or warranty in respect of the property.