

# Franklyn James



## John Nash Mews

, London, E14 7GQ

£275,000

This modern studio apartment near Limehouse DLR Station perfectly combines comfort and convenience. The open-plan kitchen is fully equipped with high-spec appliances and sleek cabinetry, flowing effortlessly into a spacious lounge area with stylish, contemporary décor.

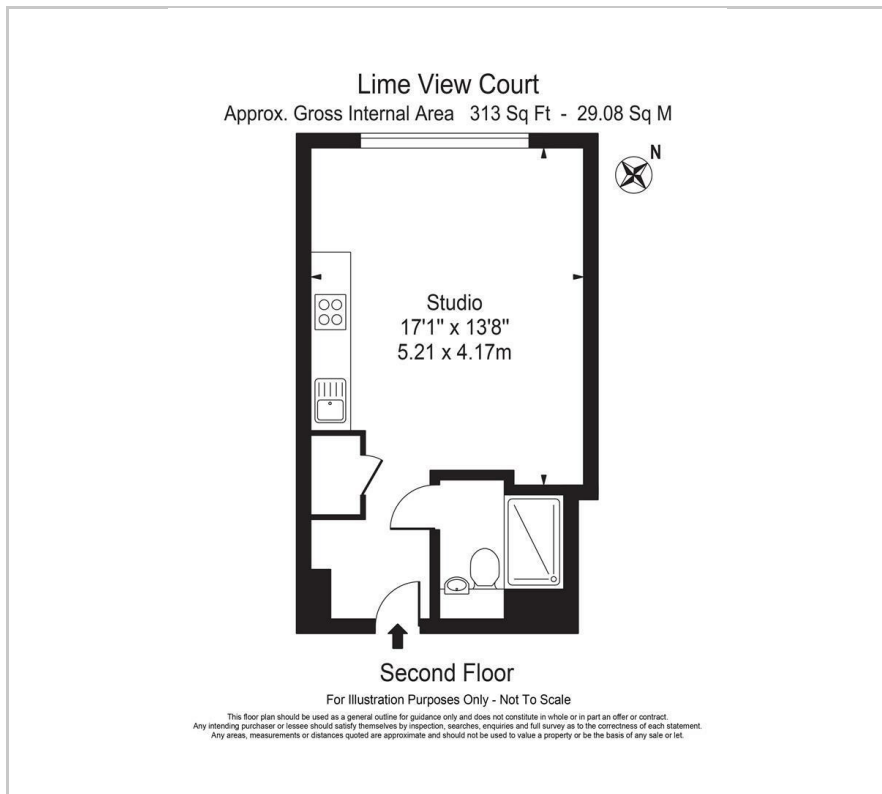
Its prime location offers quick access to Limehouse DLR, nearby shops, restaurants, and scenic riverside walks along the Thames, dotted with local pubs. With excellent connectivity to major roads and transport links, Canary Wharf, The O2, and Westfield Stratford are just a short ride away, making it ideal for vibrant city living!

### Viewing

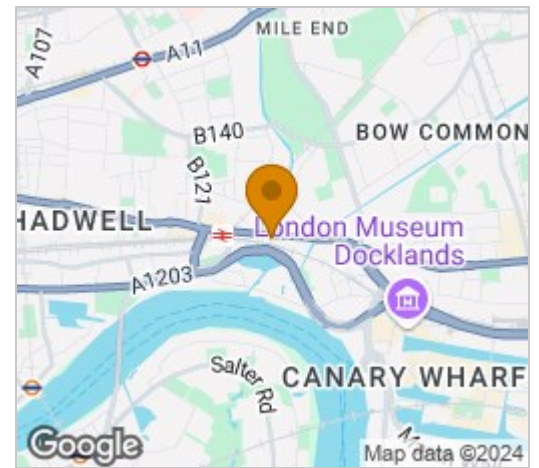
Please contact our Limehouse Sales Office on 02077911777 if you wish to arrange a viewing appointment for this property or require further information.

- Vibrant Location
- DLR & C2C Line
- Swift access to Canary Wharf
- Open Plan living/kitchen
- Lovely views
- Ideal for first time buyers or investors
- No Onward Chain
- Modern development

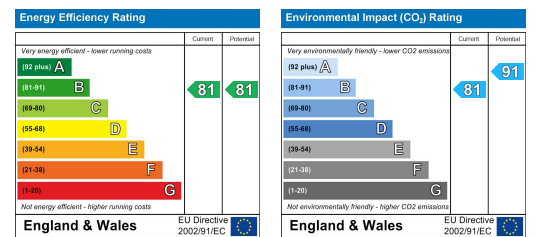
# Floor Plan



# Area Map



# Energy Efficiency Graph



These particulars, whilst believed to be accurate are set out as a general outline only for guidance and do not constitute any part of an offer or contract. Intending purchasers should not rely on them as statements of representation of fact, but must satisfy themselves by inspection or otherwise as to their accuracy. No person in this firm's employment has the authority to make or give any representation or warranty in respect of the property.