

Franklyn James



Brightlingsea Place, Limehouse, E14 8DB

£4,500 Per Calendar Month



Brightlingsea Place, Limehouse, E14 8DB

£4,500 Per Calendar Month

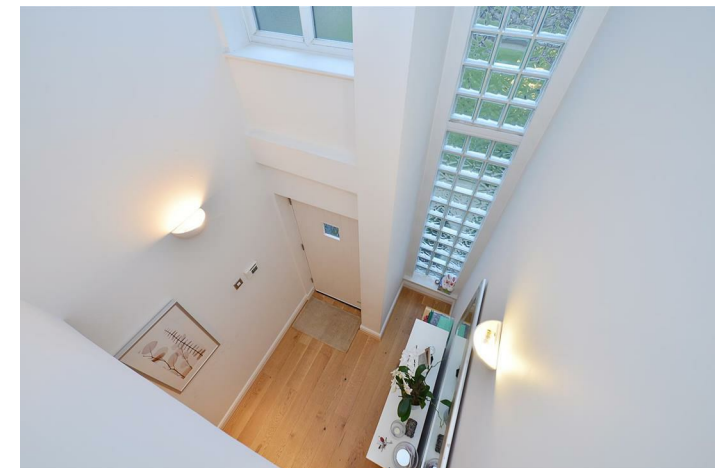
Arranged over four floors and benefiting from over 1700 square feet of living space, this charming four double bedroom town house in one of Limehouse's finest and sought after developments. Homes of this size are rarely available in Limehouse and this stylish and modern house has been extensively remodeled and is presented in immaculate internal order. The kitchen boasts of view of immaculate internal gardens. The property also benefits from underfloor heating and air conditioning.

Brightlingsea Place is situated in the heart of Limehouse, just off Narrow Street with its selection of bars, pubs, restaurants and shops. This secure development is a short distance from both Limehouse and Westferry DLR station and Canary Wharf itself.

Parking available at additional costs.

Description

- Boasting over 1700 square feet of living space
- Four double bedroom town house
- Arranged over four floors
- Three luxurious bathrooms and additional cloakroom
- Three balconies
- Air conditioning
- Underfloor heating
- Well-maintained communal gardens
- Short distance from both Limehouse and Westferry DLR
- Easy access into Canary Wharf and the City



Furnished

Council Tax Band: E

Available: 18th November 2024

