

Franklyn James



Ionian Building

45 Narrow Street, London, E14 8DX

Offers In Excess Of £415,000

Offered with no onward chain is this larger than average one-bedroom apartment, located on the second floor of the prestigious Mosaic Development, offers modern urban living at its finest. The property features an open-plan kitchen/living area that opens onto a private balcony, a generously sized double bedroom with built-in storage, and a sleek contemporary bathroom. Residents benefit from a 24-hour concierge service and a car parking space. Ideally situated, the apartment is a short walk from Limehouse DLR, providing convenient access to the City and Canary Wharf, and is close to the amenities and restaurants along Narrow Street and the Thames, including Gordon Ramsay's pub and restaurant. Furthermore you can enjoy pleasant walks along the river up to Wapping High Street and St Katherine's Dock.

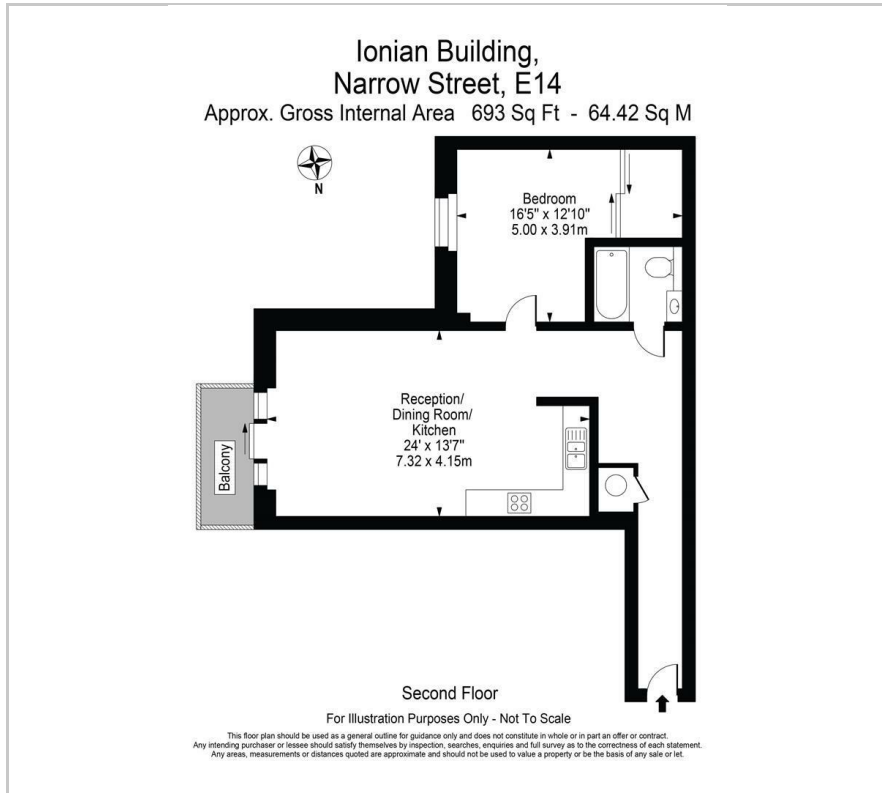
- No onward chain
- 688 sqft of living space
- Open plan kitchen/lounge
- Large tandem parking
- Balcony
- Concierge
- Excellent Location
- Good condition throughout

Viewing

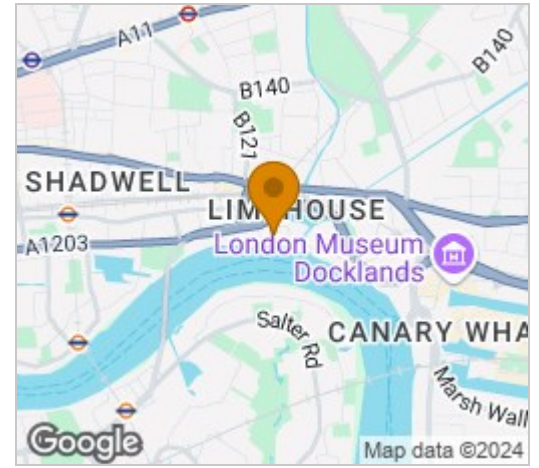
Please contact our Limehouse Sales Office on 02077911777 if you wish to arrange a viewing appointment for this property or require further information.



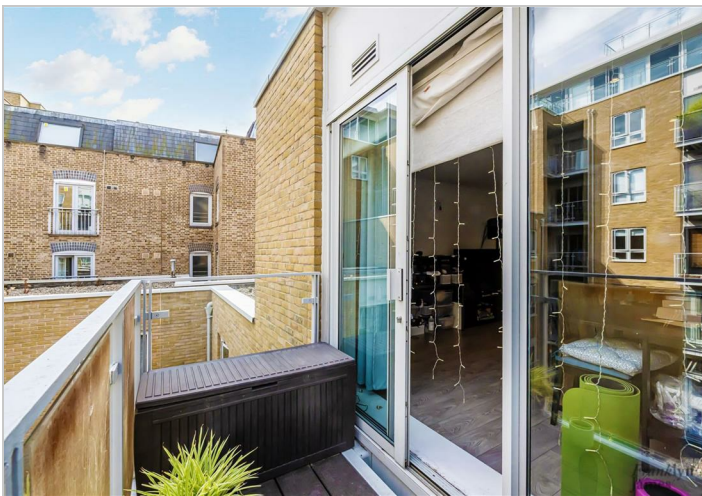
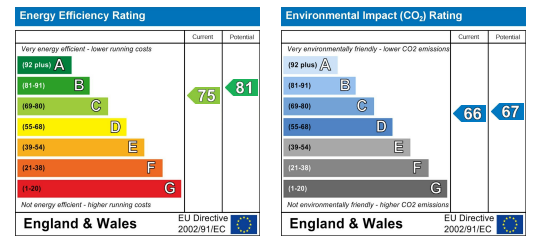
Floor Plan



Area Map



Energy Efficiency Graph



These particulars, whilst believed to be accurate are set out as a general outline only for guidance and do not constitute any part of an offer or contract. Intending purchasers should not rely on them as statements of representation of fact, but must satisfy themselves by inspection or otherwise as to their accuracy. No person in this firm's employment has the authority to make or give any representation or warranty in respect of the property.