

Franklyn James



Commercial Road

, London, E14 7LE

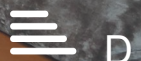
Guide Price £385,000

Set within a Grade II listed 1930s Seamen's Refuge, this stylish one-bedroom apartment seamlessly blends historic character with modern luxury. The property, located within easy walking distance of both Limehouse and Westferry DLR stations, has been meticulously upgraded while retaining its original features. The secure, gated entrance welcomes you into an open-plan living area with exposed brickwork and a striking staircase leading to a versatile mezzanine level, ideal for guest accommodation or storage. The modern kitchen is fully equipped with granite countertops and integrated appliances, including a 5-burner gas hob and combination microwave oven. The double bedroom features fitted wardrobes, while the bathroom offers a Jacuzzi bath and shower.

Additional amenities include underfloor heating, triple glazing, soundproofed walls, air conditioning, sensor lighting, and innovative air vents for continuous air circulation. Residents also benefit from a rooftop terrace, gymnasium, and porter service.

- Share of the freehold
- Chain free
- Stunning Grade II Listed 1930s converted old Seamen's Refuge
- One spacious double bedroom
- One bathroom
- Communal roof garden & Residents Gym
- Jacuzzi bath
- Air conditioning
- On site porter
- Easy access into Canary Wharf and the City

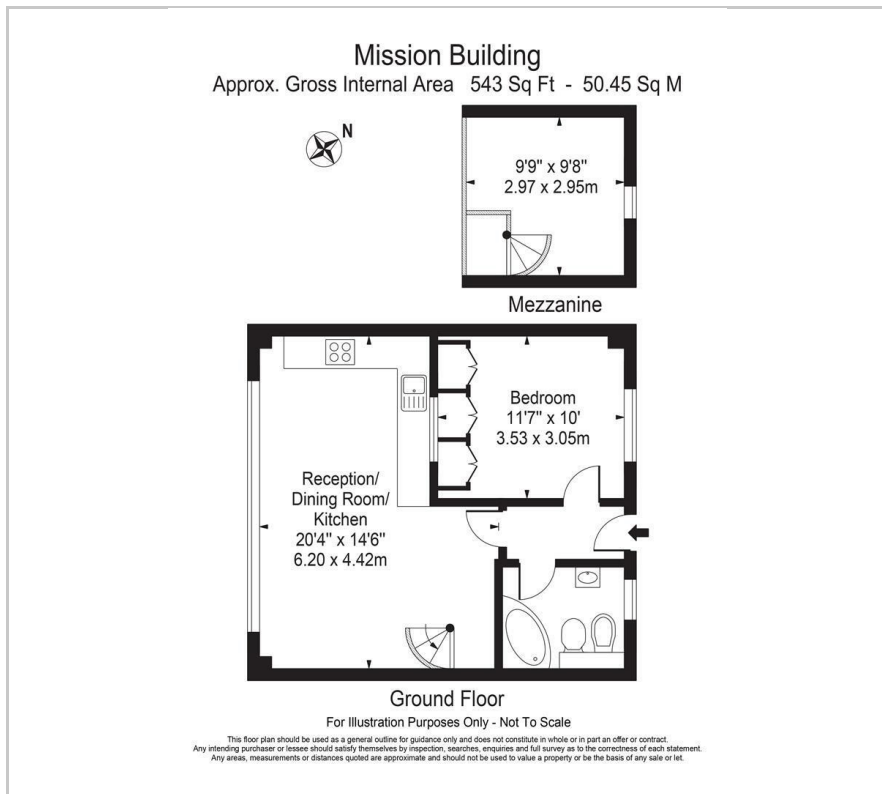
Please contact our Limehouse Sales Office on 02077911777 if you wish to arrange a viewing appointment for this property or require further information.



Viewing

Franklyn James

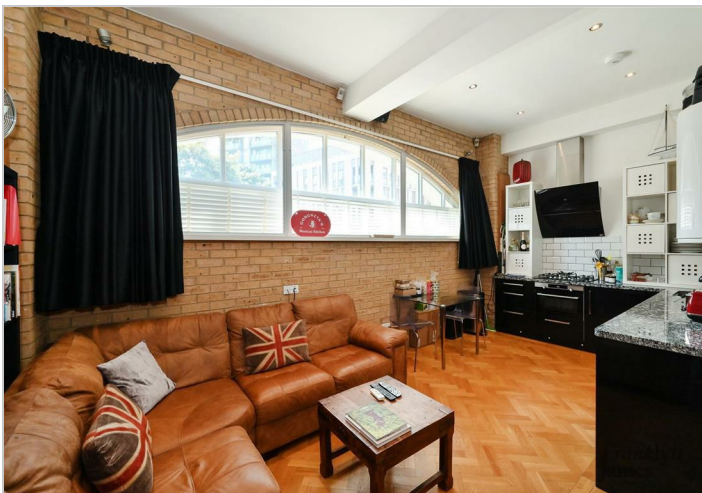
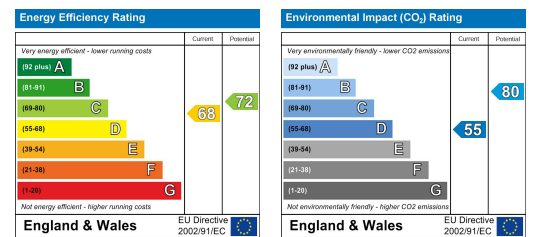
Floor Plan



Area Map



Energy Efficiency Graph



These particulars, whilst believed to be accurate are set out as a general outline only for guidance and do not constitute any part of an offer or contract. Intending purchasers should not rely on them as statements of representation of fact, but must satisfy themselves by inspection or otherwise as to their accuracy. No person in this firm's employment has the authority to make or give any representation or warranty in respect of the property.