

Franklyn James



Narrow Street

, London, E14 8EJ

Offers In Excess Of £500,000

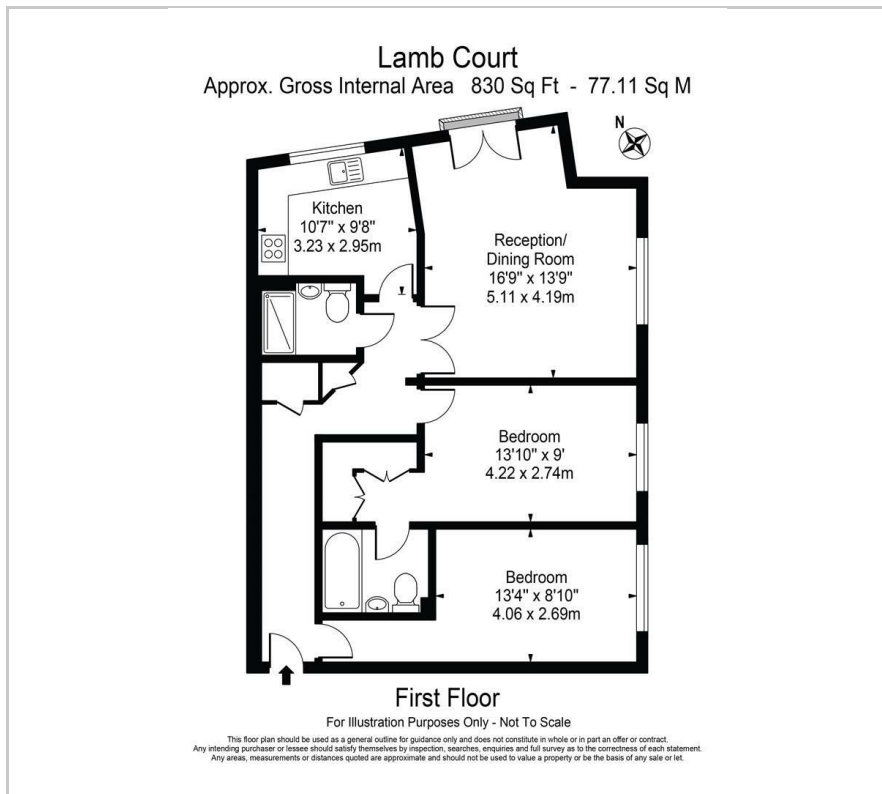
Offered with no onward chain is this spacious 2-bedroom, 2-bathroom apartment in the sought-after Lamb Court development with parking on Narrow Street. Boasting 828 square feet of living space this light and airy property features a well-designed layout with ample storage and generously sized bedrooms. The well equipped kitchen benefits from recently installed appliances and plenty of cupboard space. Situated in a prime location, residents enjoy convenient access to the vibrant attractions of Narrow Street and Wapping with Canary Wharf being just a stone's throw away.

- NO ONWARD CHAIN
- PARKING
- 2 BED 2 BATH
- LIGHT AND AIRY INTERIORS
- GOOD SIZE BEDROOMS
- AMPLE STORAGE
- NARROW STREET
- CLOSE TO CANARY WHARF

Please contact our Limehouse Sales Office on 02077911777 if you wish to arrange a viewing appointment for this property or require further information.



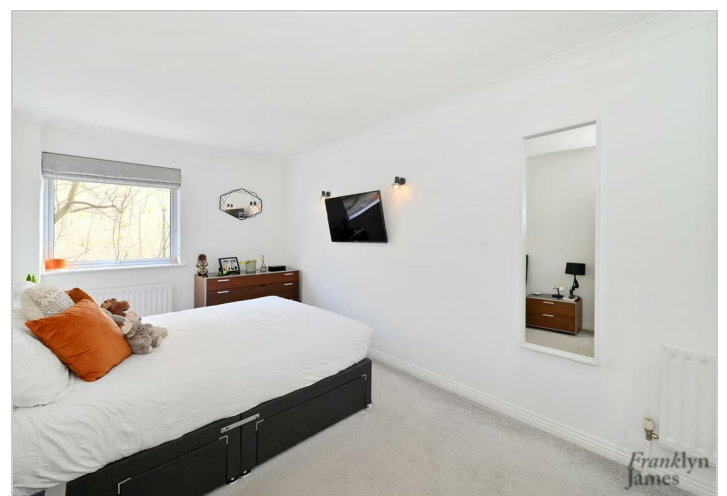
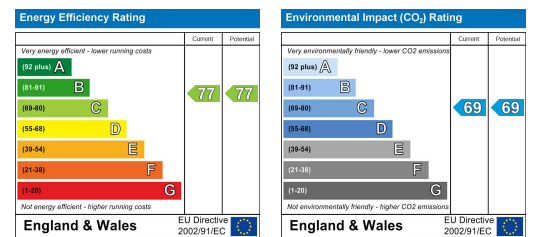
Floor Plan



Area Map



Energy Efficiency Graph



These particulars, whilst believed to be accurate are set out as a general outline only for guidance and do not constitute any part of an offer or contract. Intending purchasers should not rely on them as statements of representation of fact, but must satisfy themselves by inspection or otherwise as to their accuracy. No person in this firm's employment has the authority to make or give any representation or warranty in respect of the property.