

Franklyn James



Johnson Street

, London, E1 0AQ

Guide Price £425,000

OFFERED CHAIN FREE - Located on a quiet street in Shadwell E1, this spacious three-bedroom apartment features a generously sized reception room, three large double bedrooms, a separate kitchen, and a spacious bathroom. The property is ideally situated close to a variety of local amenities, transport links, and beautiful green spaces.

This apartment offers the perfect blend of tranquility and convenience, making it an ideal home for those looking for comfortable living in a well-connected area.

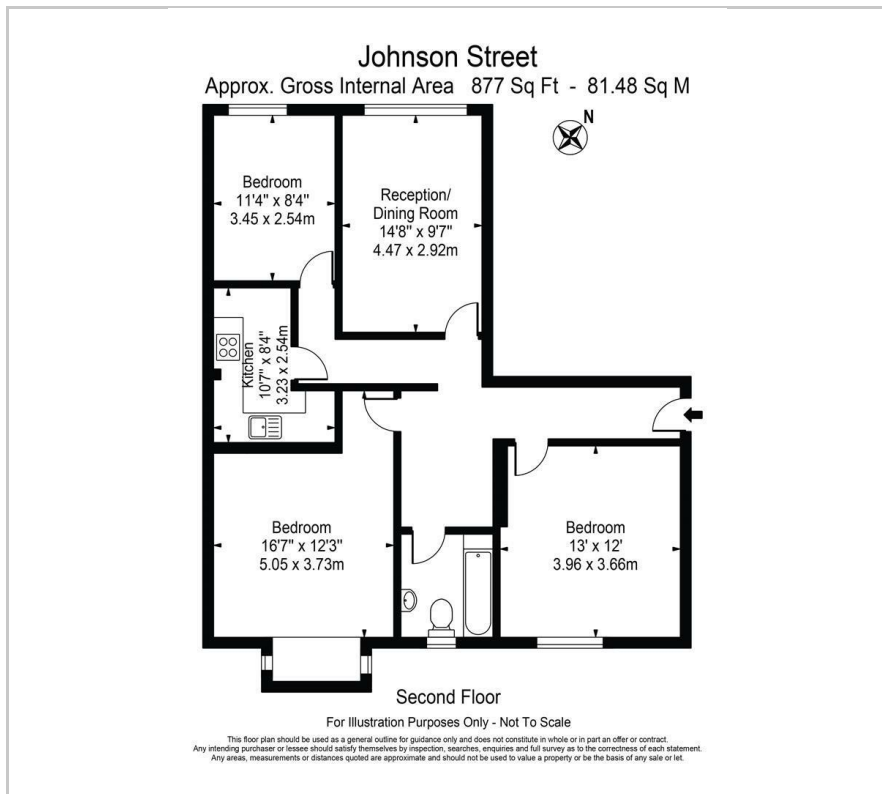
- CHAIN FREE
- LOW SERVICE CHARGE
- EXCELLENT LOCATION
- SPACIOUS ROOMS
- NEUTRAL DECOR THROUGHOUT
- GOOD RENTAL YIELD
- LIFT
- WALKING DISTANCE TO SHADWELL STATION

Viewing

Please contact our Limehouse Sales Office on 02077911777 if you wish to arrange a viewing appointment for this property or require further information.



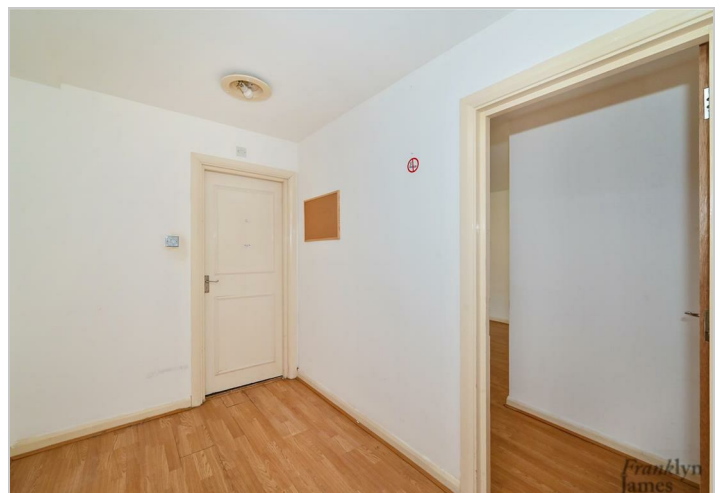
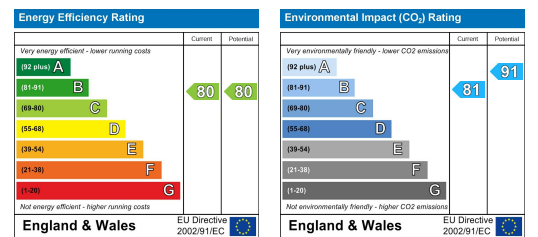
Floor Plan



Area Map



Energy Efficiency Graph



These particulars, whilst believed to be accurate are set out as a general outline only for guidance and do not constitute any part of an offer or contract. Intending purchasers should not rely on them as statements of representation of fact, but must satisfy themselves by inspection or otherwise as to their accuracy. No person in this firm's employment has the authority to make or give any representation or warranty in respect of the property.