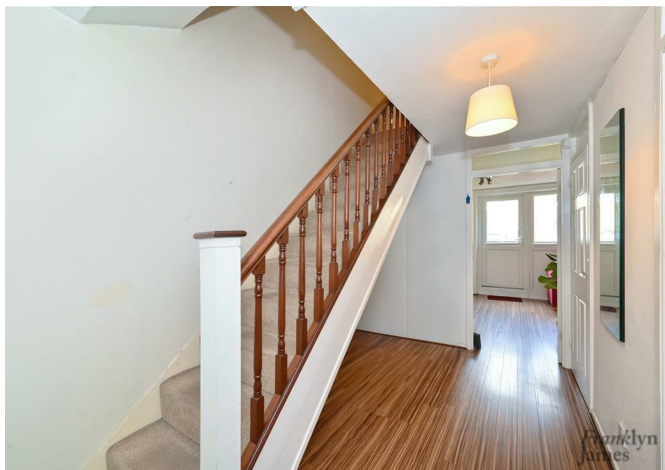


# Franklyn James



E1 0LJ  
£450,000

Franklyn  
James



E1 0LJ

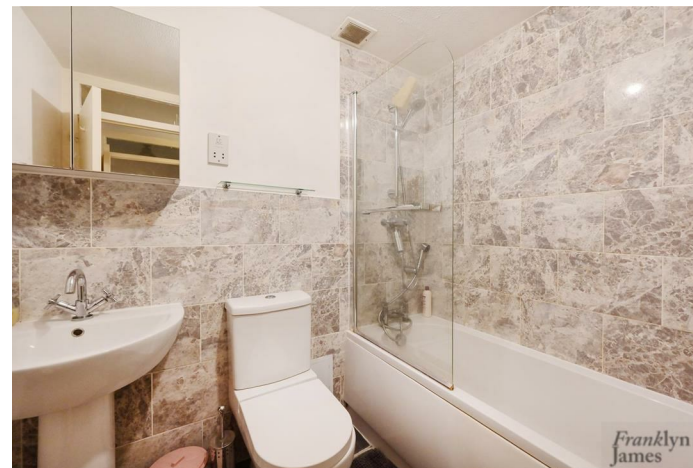
£450,000

This spacious three-bedroom duplex apartment on Lipton Road offers abundant storage and modern living. The property features a well-appointed kitchen with high-quality appliances, a separate reception room perfect for entertaining, a stylish family bathroom, and an additional cloakroom. The service charge includes the central heating costs

Ideally located just moments from Limehouse DLR station, this apartment provides convenient access to the City and Canary Wharf. Enjoy a vibrant community with a variety of local amenities, including shops, cafes, and restaurants. Excellent transport links ensure easy travel across London.

## Description

- Three bedroom apartment
- Modern kitchen
- Separate reception
- Family bathroom
- Additional cloakroom
- Local Amenities
- Private balcony
- Ample storage
- Offers easy access into Canary Wharf and the City
- Moments away from Limehouse DLR



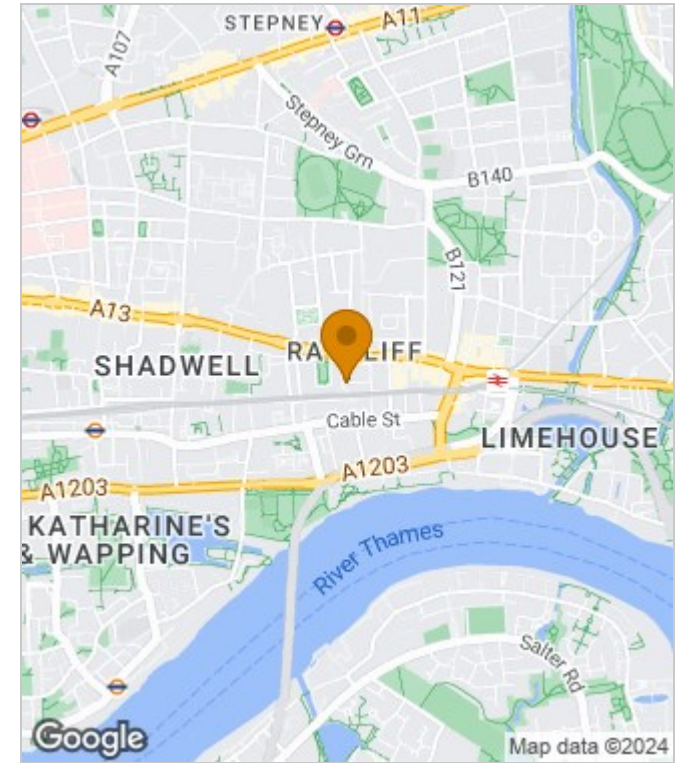
null

Council Tax Band: C

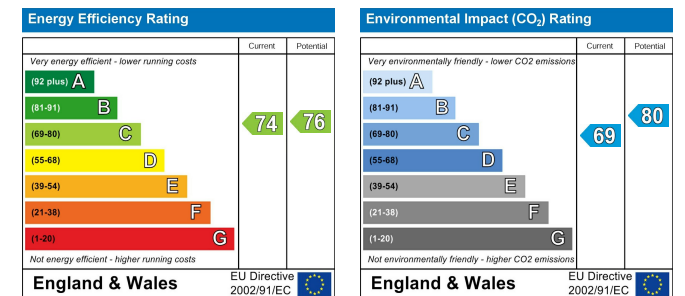
Available:



## Area Map



## Energy Performance Graph



These particulars, whilst believed to be accurate are set out as a general outline only for guidance and do not constitute any part of an offer or contract. Intending purchasers should not rely on them as statements of representation of fact, but must satisfy themselves by inspection or otherwise as to their accuracy. No person in this firms employment has the authority to make or give any representation or warranty in respect of the property.

**Franklyn James**

29 Narrow Street, London, E14 8DP  
Tel: 02077911777 Email: sales@franklynjames.co.uk https://www.franklynjames.co.uk