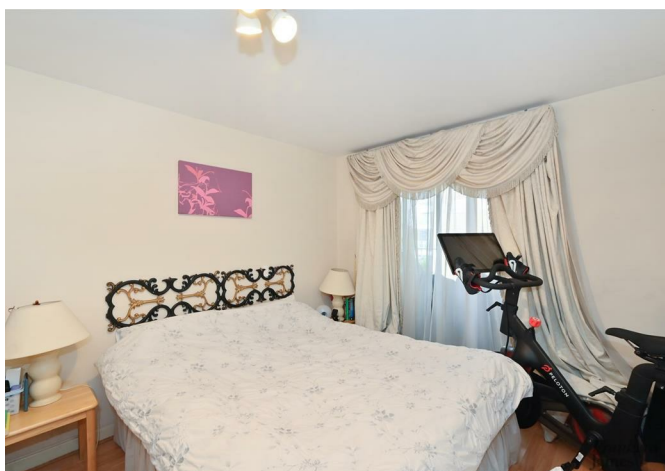


Franklyn James

Basin Approach, Marina Heights, E14 7JA
£1,800 Per Calendar Month

Franklyn James



Basin Approach, Marina Heights, E14 7JA

£1,800 Per Calendar Month

This apartment features a spacious double bedroom, a modern bathroom, and a generously-sized open-plan kitchen and living room. Ample storage space is provided for your convenience, and you can enjoy stunning views of Limehouse Marina from your private balcony.

Situated in the popular Basin Approach, this development offers easy access to a variety of shops and restaurants.

Commuting to the City and Canary Wharf is effortless with Limehouse DLR just a short walk away, making it an ideal home for busy professionals.

Description

- Furnished
- Spacious one double bedroom apartment
- One bathrooms
- Open plan kitchen
- Private balcony with marina views
- Concierge service
- Abundance of natural light
- Ample storage
- Walking distance to Limehouse DLR and C2C Station
- Easy access into the City and Canary Wharf

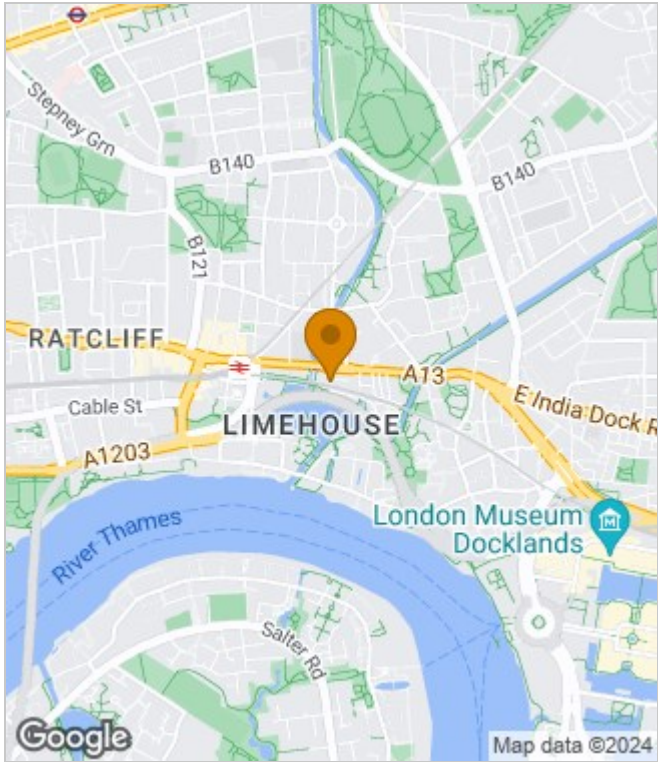


Furnished

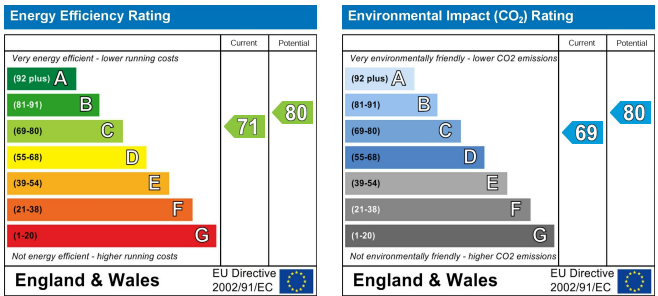
Council Tax Band: E

Available: 5th September 2024

Area Map



Energy Performance Graph



These particulars, whilst believed to be accurate are set out as a general outline only for guidance and do not constitute any part of an offer or contract. Intending purchasers should not rely on them as statements of representation of fact, but must satisfy themselves by inspection or otherwise as to their accuracy. No person in this firm's employment has the authority to make or give any representation or warranty in respect of the property.



29 Narrow Street, London, E14 8DP
 Tel: 02077911777 Email: lettings@franklynjames.co.uk <https://www.franklynjames.co.uk>