

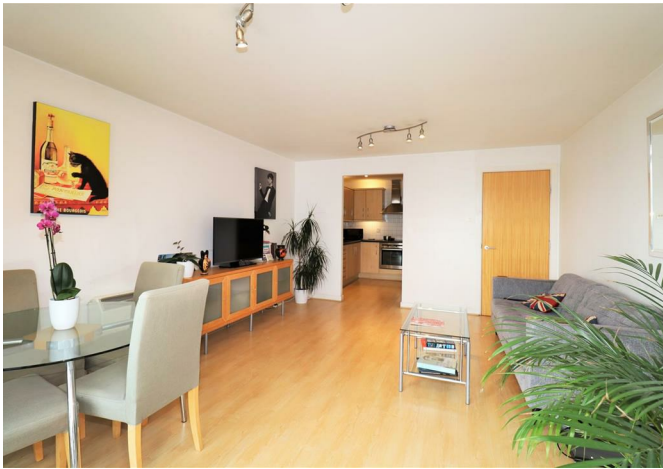
Franklyn James



Berglen Court, 7 Branch Road, E14 7JY

£2,100 Per Calendar Month

Franklyn
James



Berglen Court, 7 Branch Road, E14 7JY

£2,100 Per Calendar Month

Welcome to Berglen Court! This stunning third floor one double bedroom apartment boasts an impressive amount of space. The fully fitted kitchen provides everything you need while the reception area features floor to ceiling windows that offer breathtaking views of the Limehouse marina and Canary Wharf.

Berglen Court is conveniently located just a stone's throw away from Limehouse DLR station, making commuting a breeze. Plus, with the added bonus of an on-site 24 hour concierge and communal gardens.

For those with a car, gated underground parking is available at a separate negotiation.

Description

- Set on the third floor
- Large spacious one bedroom apartment
- One bathroom
- Balcony with marina views
- Floor to ceiling windows
- 24hr Concierge and Security
- Gated underground parking at separate negotiation
- Communal gardens
- Walking distance to Limehouse DLR
- Moments away from Canary Wharf and the City

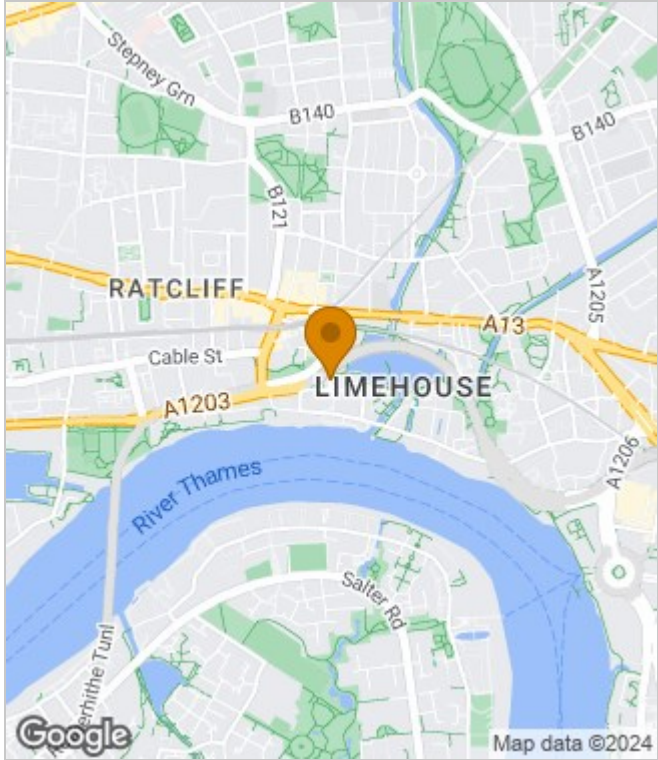


Furnished

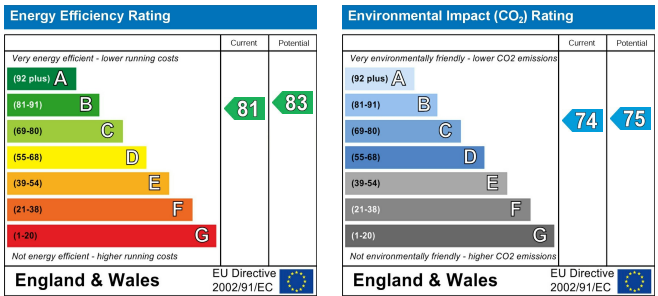
Council Tax Band: E

Available: 12th August 2024

Area Map



Energy Performance Graph



These particulars, whilst believed to be accurate are set out as a general outline only for guidance and do not constitute any part of an offer or contract. Intending purchasers should not rely on them as statements of representation of fact, but must satisfy themselves by inspection or otherwise as to their accuracy. No person in this firm's employment has the authority to make or give any representation or warranty in respect of the property.



29 Narrow Street, London, E14 8DP
 Tel: 02077911777 Email: lettings@franklynjames.co.uk <https://www.franklynjames.co.uk>