

*Franklyn  
James*



Albert Mews, E14 8EH

£3,250 Per Calendar Month

*Franklyn  
James*



## Albert Mews, E14 8EH

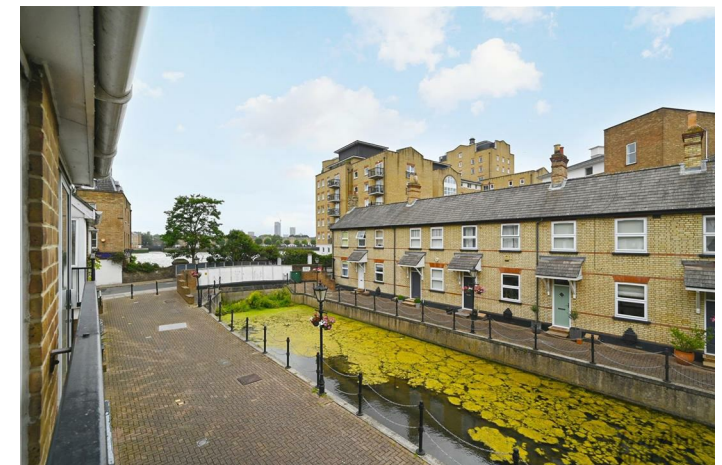
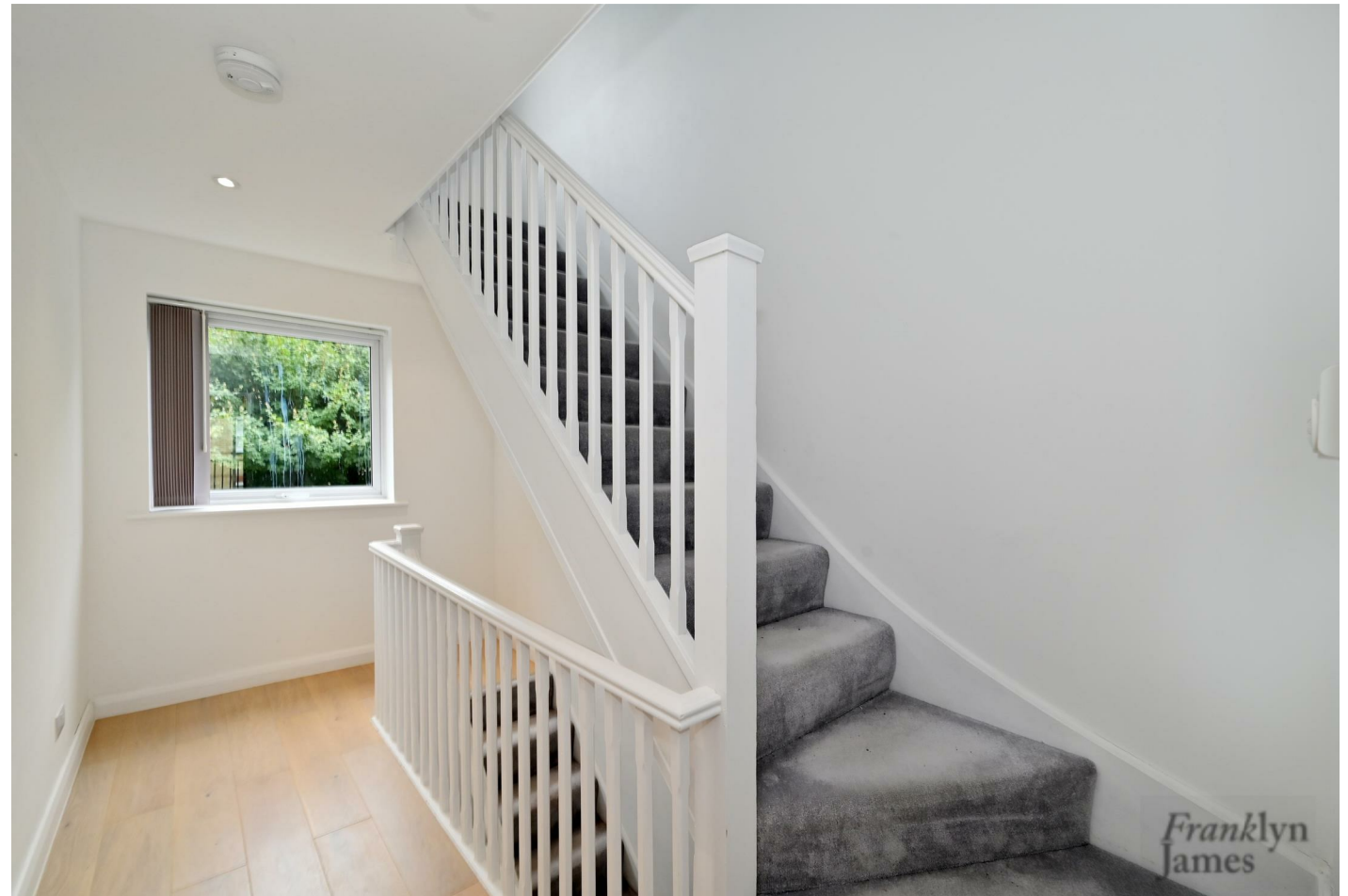
£3,250 Per Calendar Month

A beautiful three bedroom house located in Albert Mews, which is now available to the market. The property comprises of a two large reception room, two bathrooms, a fully equipped kitchen, incredibly spacious garden, as well as three bedrooms.

Albert Mews is located along the historic Narrow Street and being within short walking distance to Limehouse DLR and C2C stations. The property offers easy access to Canary Wharf and the City.

## Description

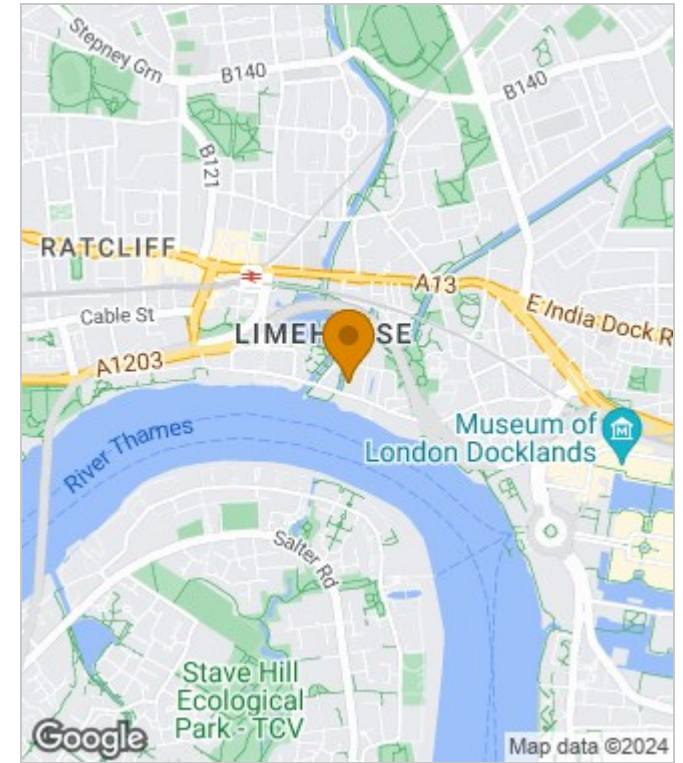
- Unfurnished
- Townhouse
- Three spacious bedrooms
- Two bathrooms
- Two receptions
- Water views
- Large garden
- Secure parking
- Moments away from Canary Wharf
- Walking distance to Limehouse DLR and C2C



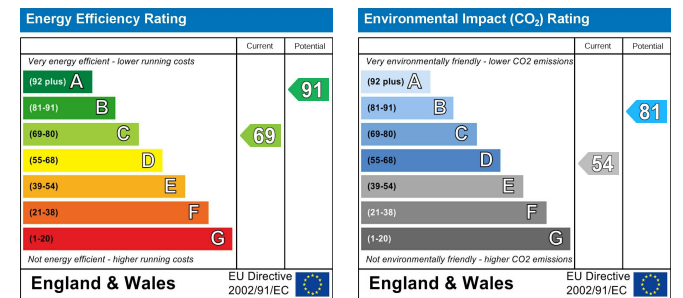
Unfurnished  
Council Tax Band: F  
Available: 6th July 2024



### Area Map



### Energy Performance Graph



These particulars, whilst believed to be accurate are set out as a general outline only for guidance and do not constitute any part of an offer or contract. Intending purchasers should not rely on them as statements of representation of fact, but must satisfy themselves by inspection or otherwise as to their accuracy. No person in this firms employment has the authority to make or give any representation or warranty in respect of the property.

# Franklyn James

29 Narrow Street, London, E14 8DP  
 Tel: 02077911777 Email: [lettings@franklynjames.co.uk](mailto:lettings@franklynjames.co.uk) <https://www.franklynjames.co.uk>