



Three Colt Street, E14 8AP
£4,250 Per Calendar Month

Franklyn
James

Franklyn
James



Three Colt Street, E14 8AP

£4,250 Per Calendar Month

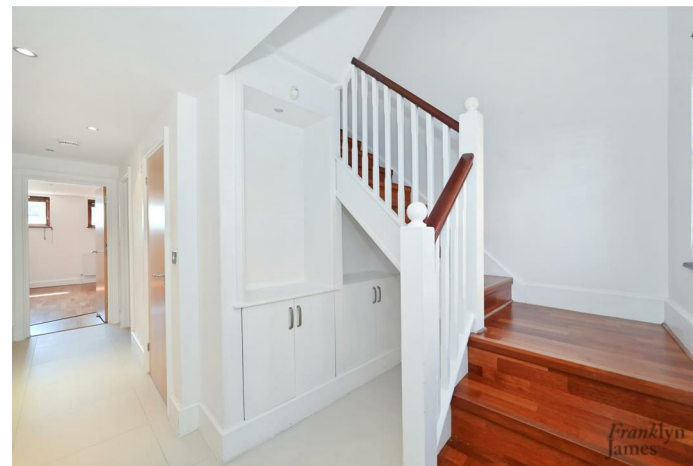
Available NOW! This expansive townhouse boasting over 1,862 square feet of living space, features four generously sized double bedrooms and three bathrooms spread across four floors.

Located just moments from Canary Wharf, this modern home is finished to a high standard. It includes an integrated kitchen, an expansive open-plan reception room, separate utility room and a versatile mezzanine space perfect for an office or additional bedroom. The property also offers a unique private garage and a private terrace with stunning views of the River Thames.

Situated on Three Colt Street, you'll enjoy seamless access to Canary Wharf and Westferry DLR, as well as a variety of local amenities, including restaurants and shops.

Description

- Unfurnished
- Modern Townhouse
- Boating over 1862 square feet of living space
- Four bedrooms
- Three bathrooms
- Private garage
- Private Terrace With River Thames Views
- Open Plan Lounge
- Moments away from Canary Wharf
- Short distance from Westferry and Limehouse DLR stations



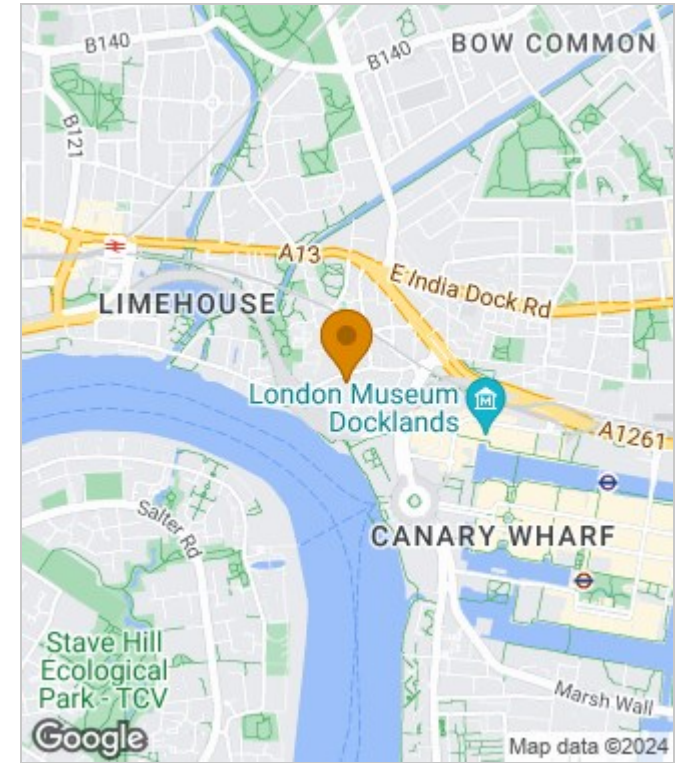
Furnished

Council Tax Band: H

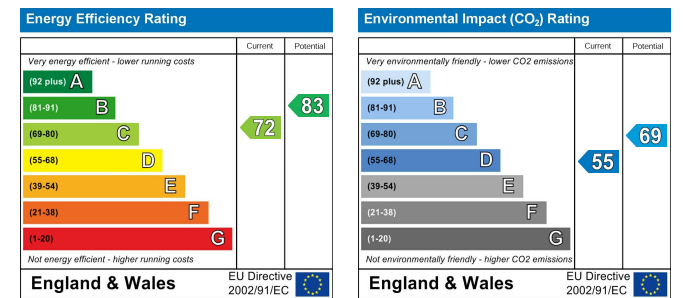
Available: 30th July 2024



Area Map



Energy Performance Graph



These particulars, whilst believed to be accurate are set out as a general outline only for guidance and do not constitute any part of an offer or contract. Intending purchasers should not rely on them as statements of representation of fact, but must satisfy themselves by inspection or otherwise as to their accuracy. No person in this firm's employment has the authority to make or give any representation or warranty in respect of the property.