

Franklyn James



Musbury Street

, London, E1 0PJ

Guide Price £375,000

Guide Price £375,000 - £400,000 - A spacious top-floor two-bedroom maisonette with a lift, perfectly positioned in the vibrant E1 district. Boasting a good size balcony with fantastic views across London, this property features two double bedrooms, a large well equipped kitchen, great storage throughout, a generous lounge with ample natural light, creating a warm and inviting atmosphere.

Situated within easy reach of Stepney Green Station & Whitechapel Station (Elizabeth and District Lines) ensures you have swift access to the heart of London, Canary Wharf & The City. There Don't miss the opportunity to make this exquisite property your new home.

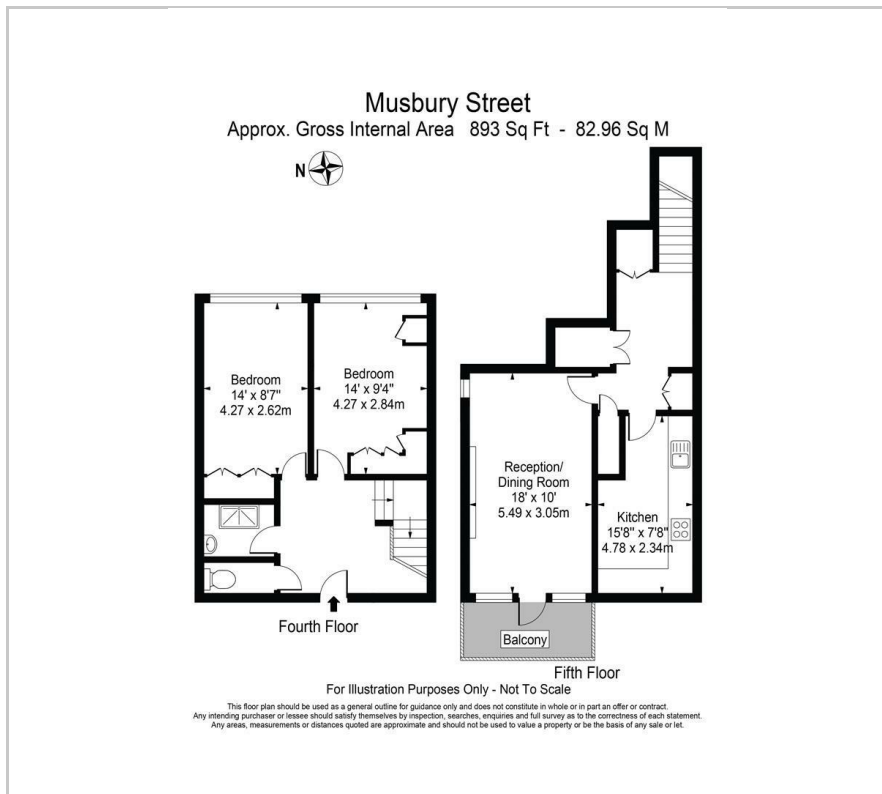
- Two double bedrooms
- Split level apartment
- Spacious eat in kitchen
- Excellent location
- Lovely living area with ample space to entertain
- Balcony
- Security entry phone system
- Close to local amenities and transport links
- Lift
- Sole agency with viewings strictly by appointment only.

Viewing

Please contact our Limehouse Sales Office on 02077911777 if you wish to arrange a viewing appointment for this property or require further information.



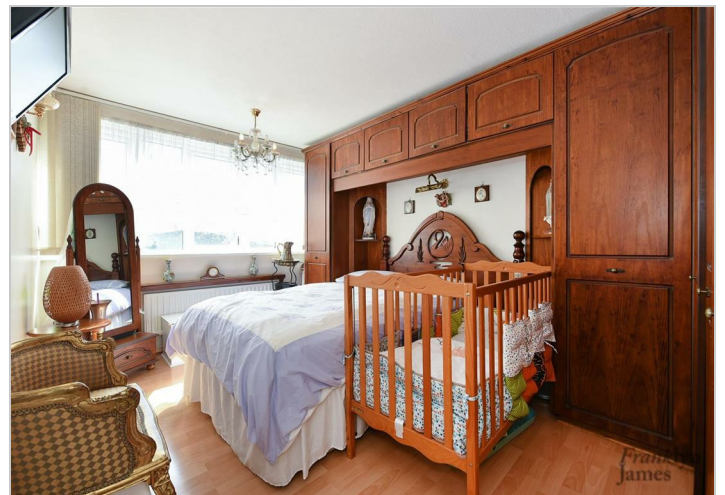
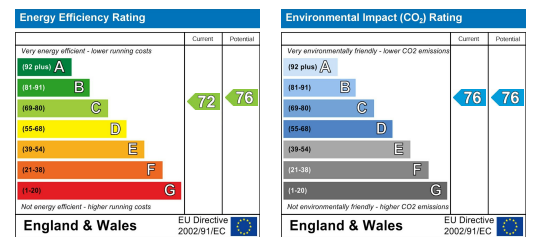
Floor Plan



Area Map



Energy Efficiency Graph



These particulars, whilst believed to be accurate are set out as a general outline only for guidance and do not constitute any part of an offer or contract. Intending purchasers should not rely on them as statements of representation of fact, but must satisfy themselves by inspection or otherwise as to their accuracy. No person in this firm's employment has the authority to make or give any representation or warranty in respect of the property.