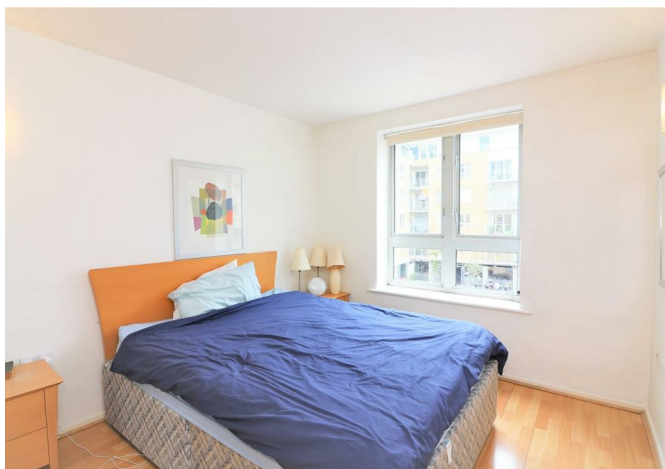




Franklyn James

Ionian Building, Narrow Street, E14 8DW

£1,800 Per Calendar Month



Ionian Building, Narrow Street, E14 8DW

£1,800 Per Calendar Month

A one double bedroom apartment in the ever-popular Mosaic development. The apartment comprises of a large living room, open-plan kitchen, master bedroom with fitted wardrobes, modern bathroom and private balcony. The Mosaic has the additional benefit of a 24 hour concierge. The property is located within walking distance of Limehouse DLR station offering easy access into the City.

Description

- One double bedroom
- Private balcony
- Large reception room
- Fitted wardrobes
- 24 hour concierge
- Close to Limehouse DLR station
- secure underground parking

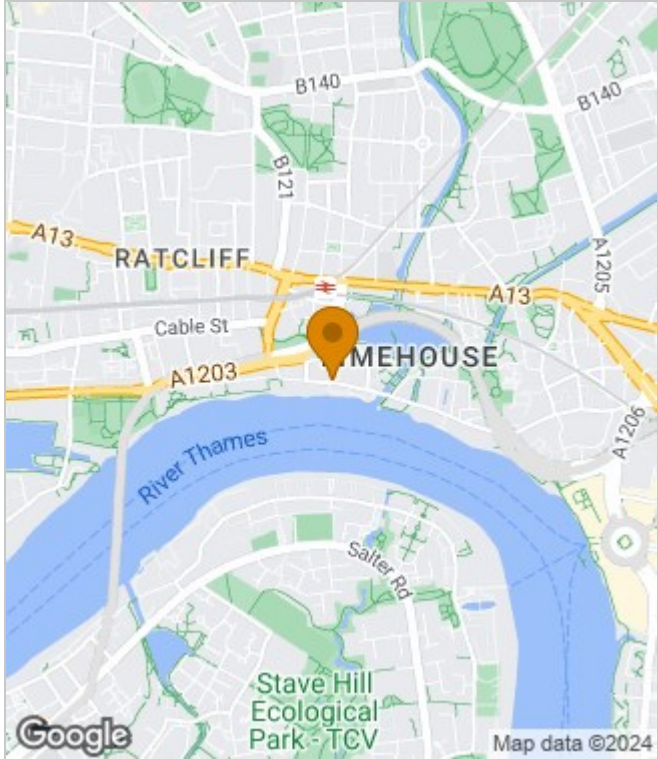


Furnished

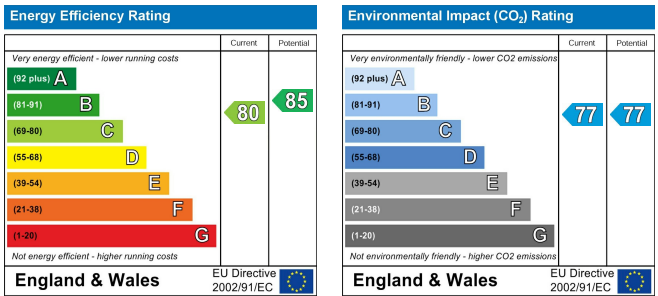
Council Tax Band: D

Available: 26th July 2024

Area Map



Energy Performance Graph



These particulars, whilst believed to be accurate are set out as a general outline only for guidance and do not constitute any part of an offer or contract. Intending purchasers should not rely on them as statements of representation of fact, but must satisfy themselves by inspection or otherwise as to their accuracy. No person in this firm's employment has the authority to make or give any representation or warranty in respect of the property.



29 Narrow Street, London, E14 8DP
 Tel: 02077911777 Email: lettings@franklynjames.co.uk <https://www.franklynjames.co.uk>