

# Franklyn James



## Branch Road

, London, E14 7JT

£875,000

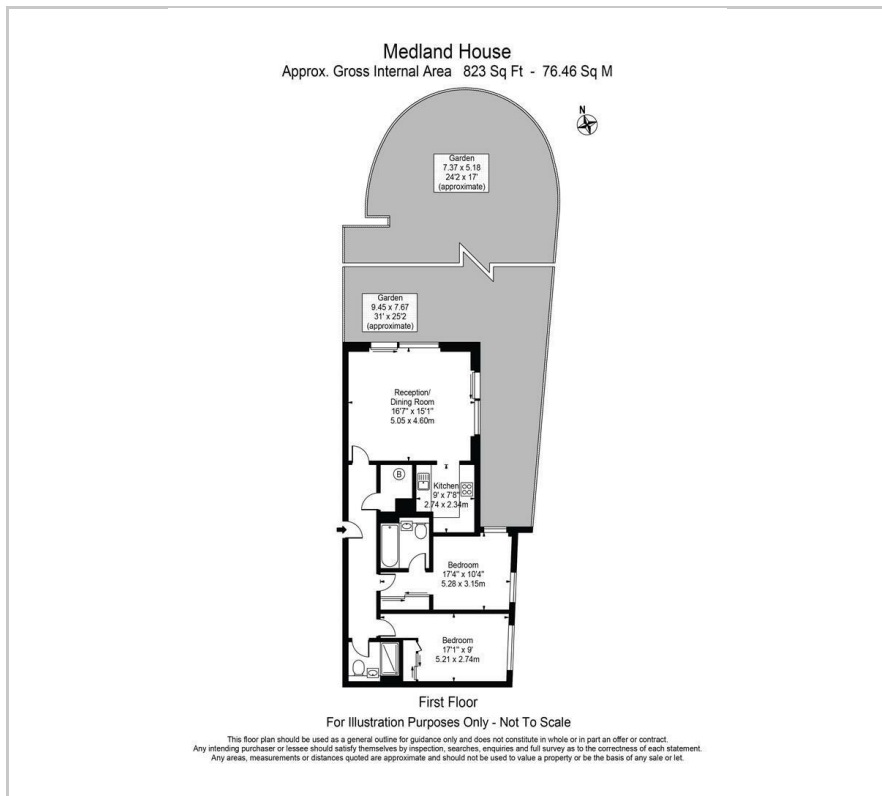
ONE OF A KIND - Experience luxury living with unparalleled views at this stunning apartment in Limehouse. Featuring a private 47ft vast terrace offering breathtaking views of Limehouse Marina and Canary Wharf, this immaculately presented residence is situated in a sought-after managed development. Enjoy the security and convenience of this prime location, just off historic Narrow Street, with its array of popular restaurants and bars, including Gordon Ramsay's Bread Street gastropub. Relax with peaceful walks along the Thames Path to Canary Wharf or the City. With excellent transport links including the DLR and C2C service from Limehouse. Call now to avoid disappointment.

- 2 BEDROOM 2 BATHROOM APARTMENT
- PRIVATE TERRACE
- PRIME LOCATION
- STUNNING VIEWS
- VARIETY OF LOCAL AMENITIES
- CLOSE BY TRANSPORTATION LINKS INTO THE CITY

Please contact our Limehouse Lettings Office on 02077911777 if you wish to arrange a viewing appointment for this property or require further information.



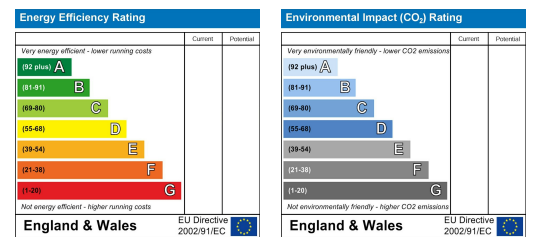
# Floor Plan



# Area Map



# Energy Efficiency Graph



These particulars, whilst believed to be accurate are set out as a general outline only for guidance and do not constitute any part of an offer or contract. Intending purchasers should not rely on them as statements of representation of fact, but must satisfy themselves by inspection or otherwise as to their accuracy. No person in this firm's employment has the authority to make or give any representation or warranty in respect of the property.