

Franklyn James



Ionian Building

45 Narrow Street, London, E14 8DW

£450,000

A fantastic opportunity to purchase this larger than average, 800+ sq ft, modern one bedroom apartment situated in the popular Mosaic development along Narrow Street in Limehouse. The property benefits from a fantastic open plan lounge and kitchen with ample space for entertaining, large L-shaped balcony with south facing views over the central courtyard, large double bedroom with a fabulous walk-in wardrobe providing ample storage, modern bathroom with a walk-in shower, secure underground parking space, 24 hour concierge and is within walking distance of Limehouse DLR station and Canary Wharf.

- One double bedroom
- Open plan reception/kitchen
- Large L-shaped balcony
- Walk-in wardrobe
- 24 hour concierge
- Close to Limehouse DLR and C2C station
- Secure underground parking space
- No onward chain

Viewing

Please contact our Limehouse Lettings Office on 02077911777 if you wish to arrange a viewing appointment for this property or require further information.



1



1

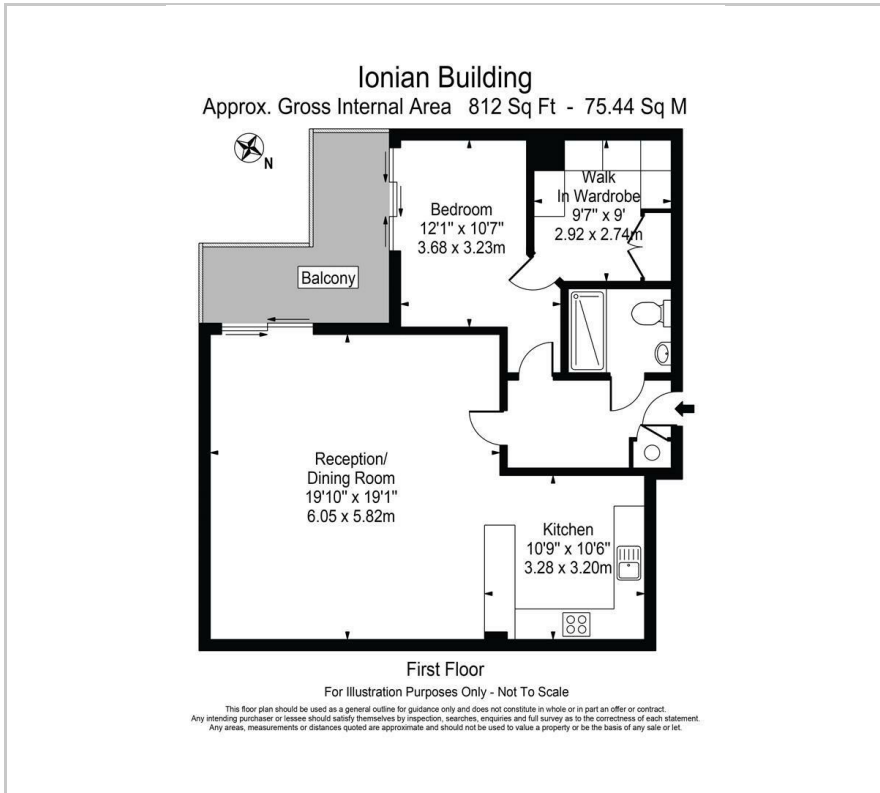


1



B

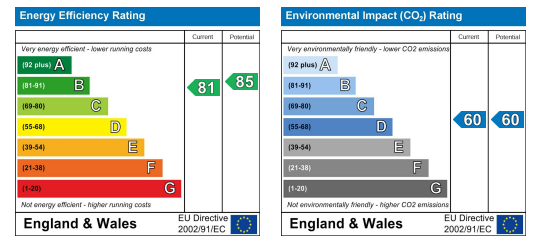
Floor Plan



Area Map



Energy Efficiency Graph



These particulars, whilst believed to be accurate are set out as a general outline only for guidance and do not constitute any part of an offer or contract. Intending purchasers should not rely on them as statements of representation of fact, but must satisfy themselves by inspection or otherwise as to their accuracy. No person in this firm's employment has the authority to make or give any representation or warranty in respect of the property.