

Franklyn James



Commercial Road, Limehouse, E14 7LF

£2,350 Per Calendar Month

Franklyn
James



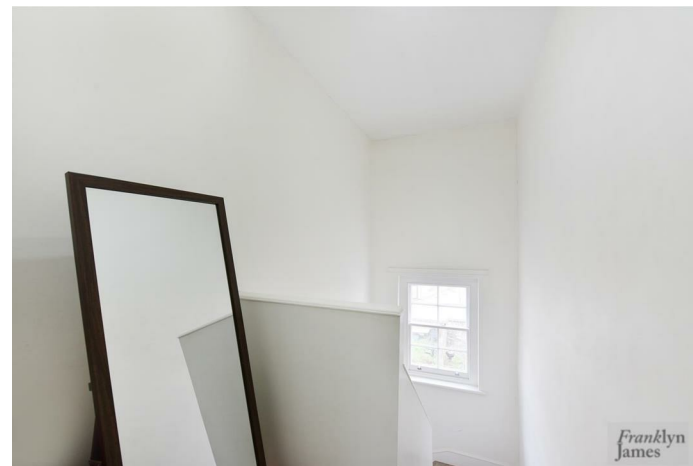
Commercial Road, Limehouse, E14 7LF

£2,350 Per Calendar Month

YOUR OWN GARDEN! This homely apartment has been well maintained throughout and offers an abundance of space. Providing split-level accommodation, this fantastic unit comprises large reception room, separate fully fitted kitchen, two double bedrooms and main bathroom. There is also access to a private rear garden. Offered on a furnished basis, the property is ideally located for Limehouse DLR station, which offers good links to the City and Canary Wharf. The historic Narrow Street, with its many popular restaurants and bars, including the Gordon Ramsey pub 'The Narrow' is a short walk away. You could also enjoy peaceful walks with picturesque views along the Thames Path to Canary Wharf or the City.

Description

- Period conversion
- Prime location
- Two bedroom spacious apartment
- Separate fully fitted kitchen
- Private rear garden
- Split level accommodation
- Floor to ceiling windows
- Abundance of natural light
- Moments away from Canary Wharf
- Ideally located for Limehouse DLR station



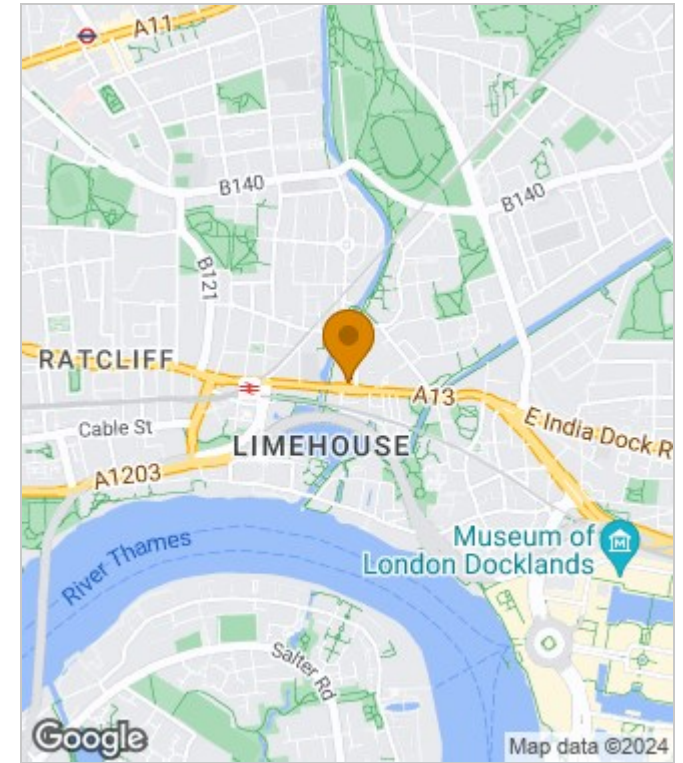
Furnished

Council Tax Band: C

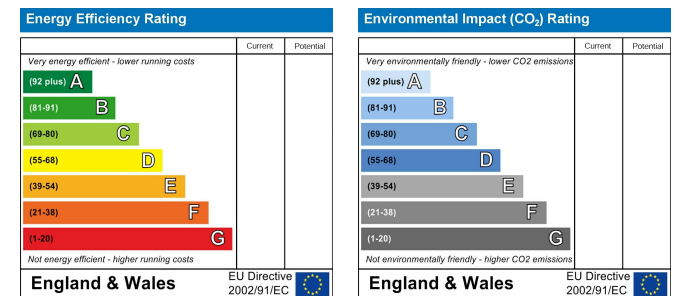
Available: 8th May 2024



Area Map



Energy Performance Graph



These particulars, whilst believed to be accurate are set out as a general outline only for guidance and do not constitute any part of an offer or contract. Intending purchasers should not rely on them as statements of representation of fact, but must satisfy themselves by inspection or otherwise as to their accuracy. No person in this firm's employment has the authority to make or give any representation or warranty in respect of the property.

**Franklyn
James**

29 Narrow Street, London, E14 8DP
Tel: 02077911777 Email: lettings@franklynjames.co.uk <https://www.franklynjames.co.uk>