

Franklyn James



93, Stainsby Road

, London, E14 6JN

Offers In Excess Of £450,000

Situated on the sixth floor, this inviting two-bedroom apartment in Abbott's Wharf provides a comfortable living space spanning 690 square feet with a newly refurbished fitted kitchen. Enjoy scenic views of the Limehouse Cut Canal from your own private balcony, a perfect spot to relax and unwind.

This property comes with valuable features such as secure allocated parking, 24 hour concierge for added convenience, and the benefit of no onward chain, simplifying the moving process.

The location of Abbott's Wharf is ideal for commuters, with easy access to both Langdon Park and Westferry DLR Stations. These transport links offer efficient connections to The City and Canary Wharf, making this apartment a great choice for those working in these areas.

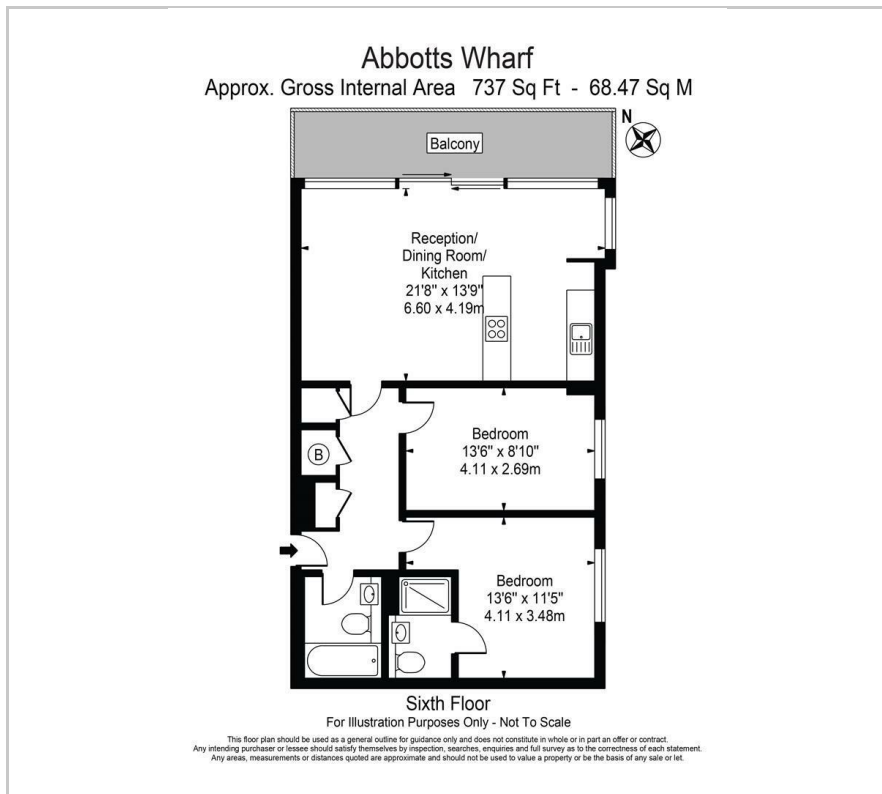
For nature lovers, Bartlett Park is just a stone's throw away, providing a nearby green space to enjoy. Additionally, the park houses a popular café where you can grab a coffee or a bite to eat. Limehouse boasts an array of restaurants and pubs that can be easily reached by taking a leisurely stroll along the canal, adding to the charm and convenience of the area.

- CHAIN FREE
- 2 bedroom, 2 bathroom apartment
- Secure allocated parking space
- Private balcony
- EWS1 A1 fire safety certification
- Close to transportation links into city
- Canal and park views

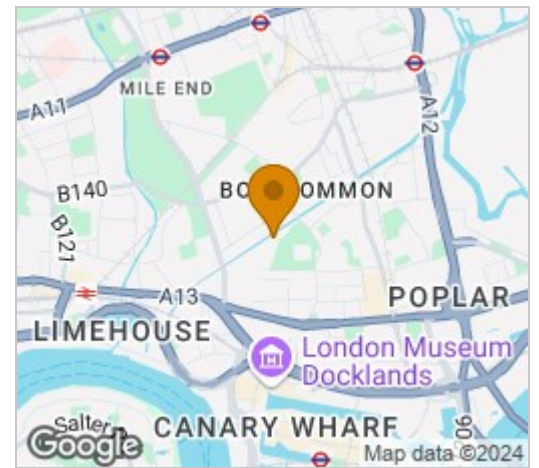
Please contact our Limehouse Sales Office on 02077911777 if you wish to arrange a viewing appointment for this property or require further information.



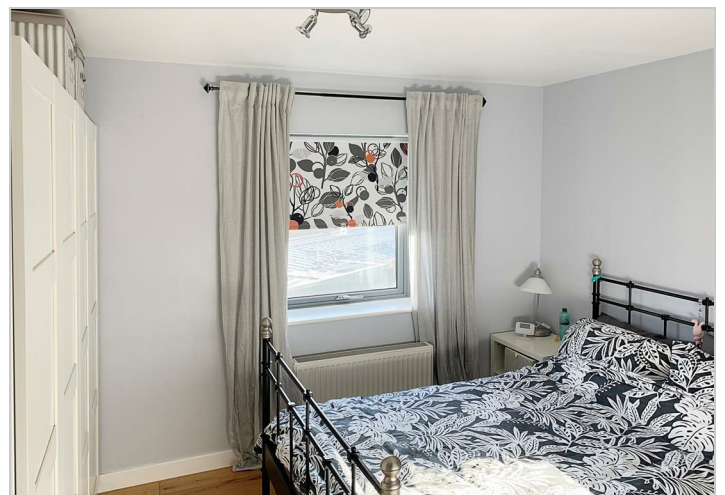
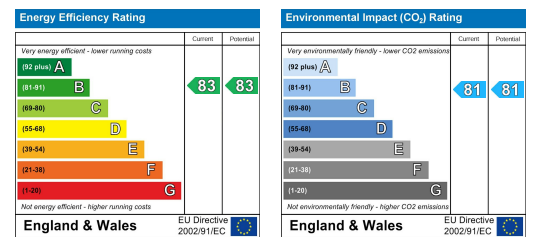
Floor Plan



Area Map



Energy Efficiency Graph



These particulars, whilst believed to be accurate are set out as a general outline only for guidance and do not constitute any part of an offer or contract. Intending purchasers should not rely on them as statements of representation of fact, but must satisfy themselves by inspection or otherwise as to their accuracy. No person in this firm's employment has the authority to make or give any representation or warranty in respect of the property.