

# Franklyn James



## Lockview Court, 67 Narrow Street

, London, E14 8EN

£510,000

CHAIN FREE - A beautiful 2-bedroom, 2-bathroom apartment nestled within a secure development of Lockview Court on the coveted Narrow Street in Limehouse. Boasting gorgeous views over the marina and across The City, this property has charm and elegance combined with a modern twist.

Features spacious rooms throughout, where each room is thoughtfully crafted for functionality and style. The well-appointed bedrooms provide a retreat with ample natural light and storage. This property comes with an allocated parking space.

Situated in the vibrant Limehouse district, this apartment provides easy access to local amenities, trendy eateries, and the picturesque surroundings of Narrow Street.

- CHAIN FREE
- Beautiful views of the city
- Generously sized rooms throughout
- Secure development
- Allocated secure parking space
- Close by transportation links to the city
- A wide range of local amenities

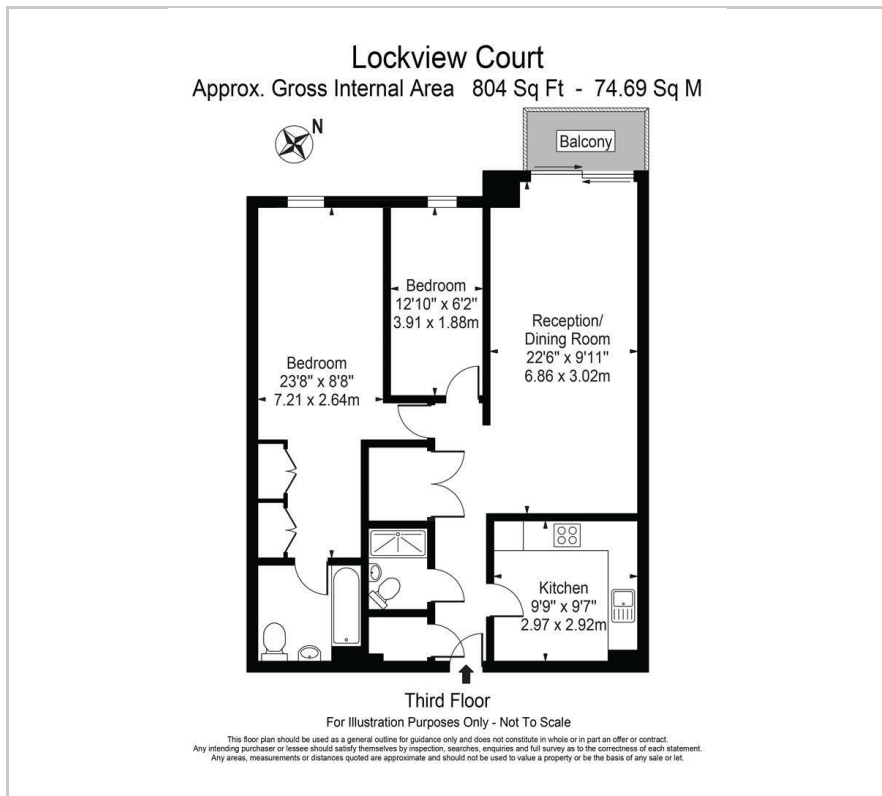
### Viewing

Please contact our Limehouse Sales Office on 02077911777 if you wish to arrange a viewing appointment for this property or require further information.

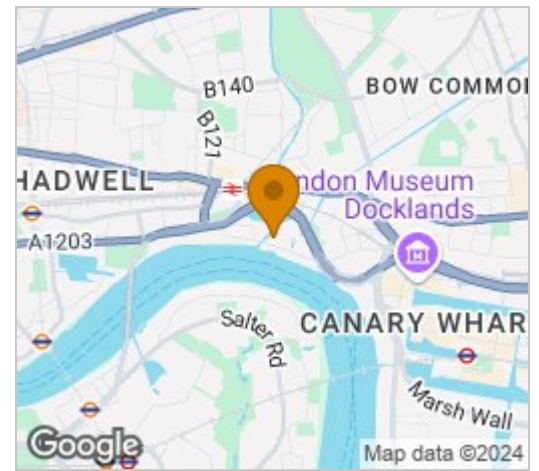




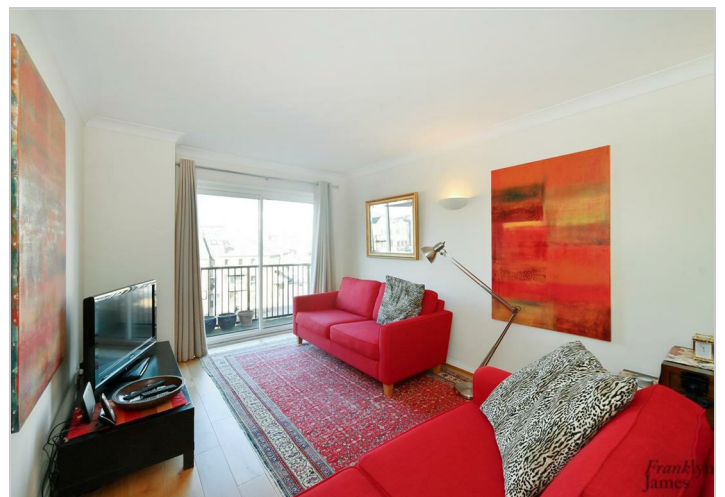
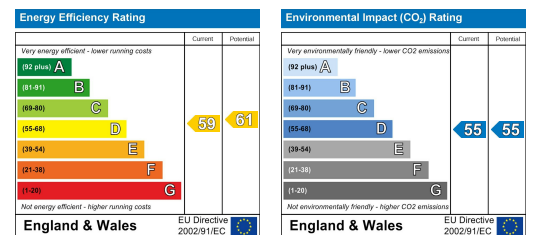
# Floor Plan



# Area Map



# Energy Efficiency Graph



These particulars, whilst believed to be accurate are set out as a general outline only for guidance and do not constitute any part of an offer or contract. Intending purchasers should not rely on them as statements of representation of fact, but must satisfy themselves by inspection or otherwise as to their accuracy. No person in this firm's employment has the authority to make or give any representation or warranty in respect of the property.