

Franklyn James



Branch Road

, London, E14 7JY

Offers In The Region Of £625,000

OFFERED CHAIN-FREE. This remarkable property undoubtedly claims the title of the most spectacular views within the entire complex, showcasing unobstructed panoramic views of Canary Wharf and the picturesque Limehouse Marina, which can be admired from the private balcony on the fourth floor, creating an ideal setting for alfresco dining and leisure.

Bathed in an abundance of natural light, the generously sized living room features floor-to-ceiling windows that further enhance the allure of this apartment. The adjacent partially separate kitchen seamlessly complements the living area. The master bedroom is complete with an en-suite bathroom, with the addition of a second double bedroom, family bathroom, and an abundance of storage.

Security and convenience are paramount at Berglen Court, where a 24-hour concierge and security service ensures peace of mind, including a secure allocated underground parking spot.

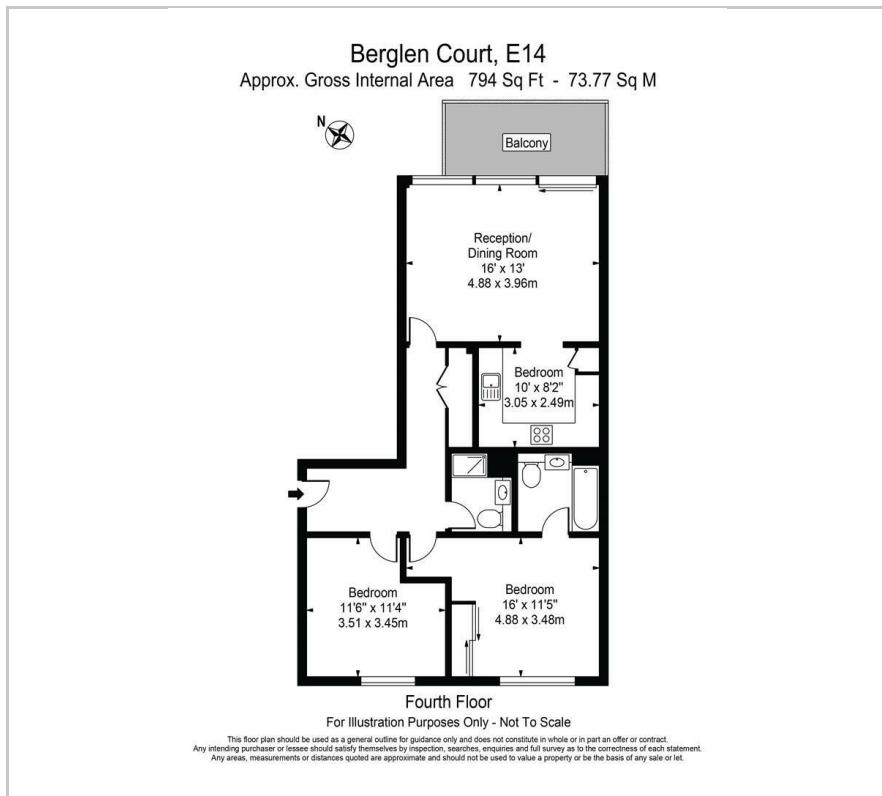
Located within close proximity to the DLR transport system, this flat offers swift access to both the city centre and Canary Wharf, making daily commuting super convenient. Berglen Court's prime location ensures that essential amenities and entertainment options are within easy reach, making it an exceptional place to call home.

- Views of Canary Wharf & Limehouse Marina
- Open-Plan Kitchen/Dining/Lounge
- Large Private Balcony
- Two Bed / Two Bath
- Secure Allocated Underground Parking
- Chain-Free
- Share of Freehold
- 24 Hour Concierge
- Next to Limehouse DLR
- 794 SqFt / 73.77 SqM

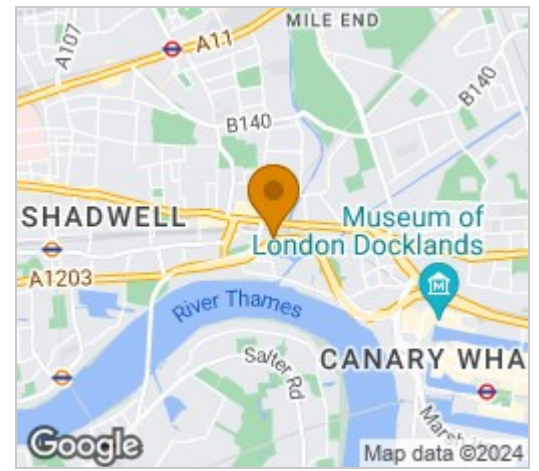
Please contact our Limehouse Sales Office on 02077911777 if you wish to arrange a viewing appointment for this property or require further information.



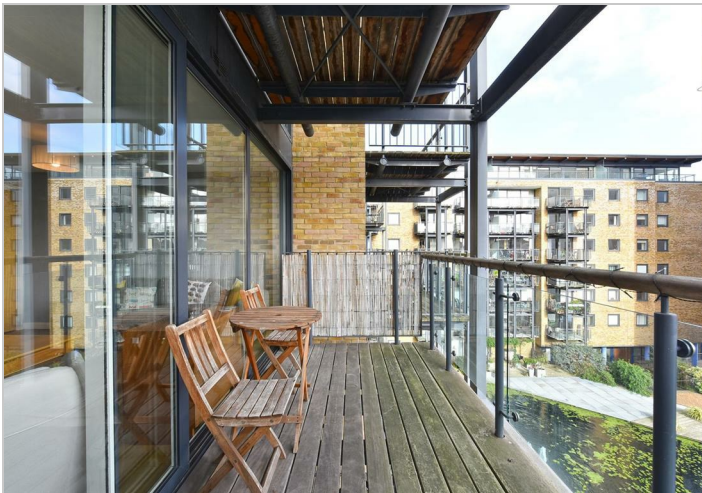
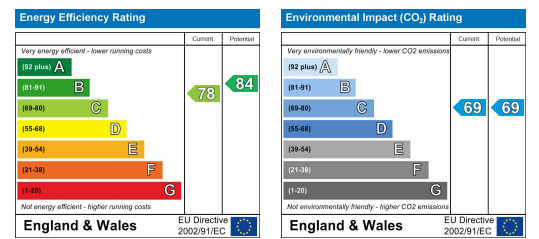
Floor Plan



Area Map



Energy Efficiency Graph



These particulars, whilst believed to be accurate are set out as a general outline only for guidance and do not constitute any part of an offer or contract. Intending purchasers should not rely on them as statements of representation of fact, but must satisfy themselves by inspection or otherwise as to their accuracy. No person in this firm's employment has the authority to make or give any representation or warranty in respect of the property.