

Franklyn James



7 Branch Road

Limehouse, London, E14 7JX

Asking Price £640,000

CHAIN FREE - Franklyn James are proud to present this impressive two double bedroom apartment located wonderfully for Limehouse DLR station, with stunning balcony views of Limehouse Marina. Internally the apartment has been refurbished throughout, offering real wood flooring in the south facing lounge. Leading into the kitchen you will find natural stone travertine flooring along with marble kitchen worktops and fitted AEG and Bosch appliances. Through the hallway you will find a spacious master bedroom, also south west facing, with built in wardrobes and complete with a four-piece en-suite bathroom including a whirlpool jacuzzi bathtub and natural stone tiles.

Further down the hallway you will find a spacious second bedroom also complete with built in wardrobe, and a second family shower room with marble tiles. Both en-suite bathroom and the family shower room benefit from underfloor heating with touch screen temperature control.

The development include 24-hour concierge, secure underground parking and well maintained gated residents' communal garden with waterfall features and Limehouse Marina and Canary Wharf skyline views.

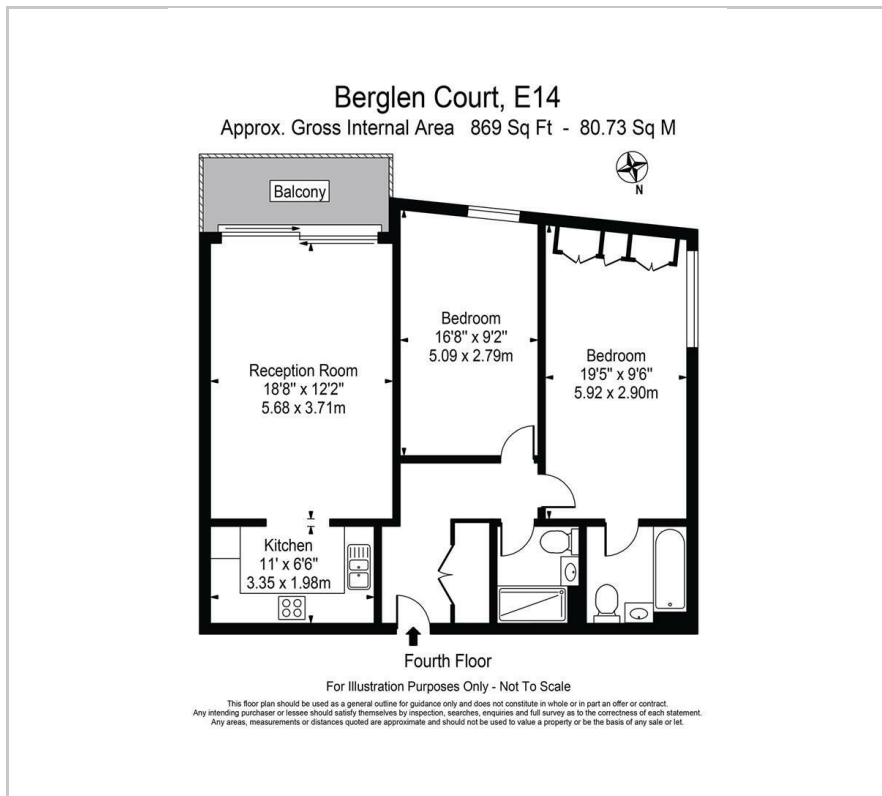
- South facing two bedroom apartment
- Two bathrooms
- Refurbished to a high standard
- Private balcony
- Secure underground parking
- 24 hour concierge
- Communal gardens with water feature
- Short walk away from Limehouse DLR
- Popular development near Limehouse marina
- Chain free

Viewing

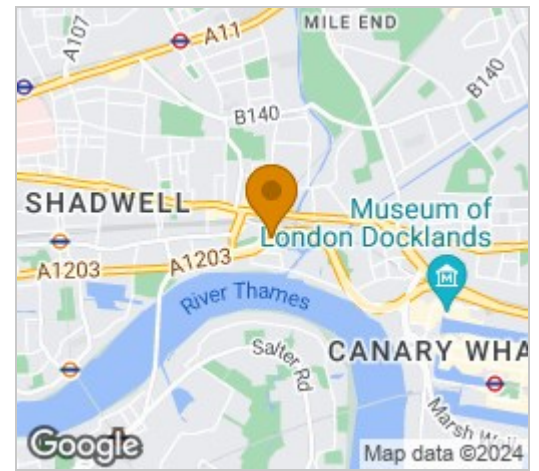
Please contact our Limehouse Sales Office on 02077911777 if you wish to arrange a viewing appointment for this property or require further information.



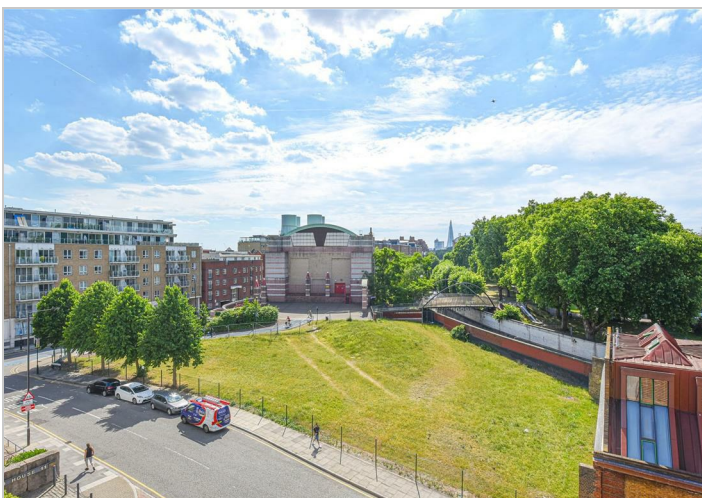
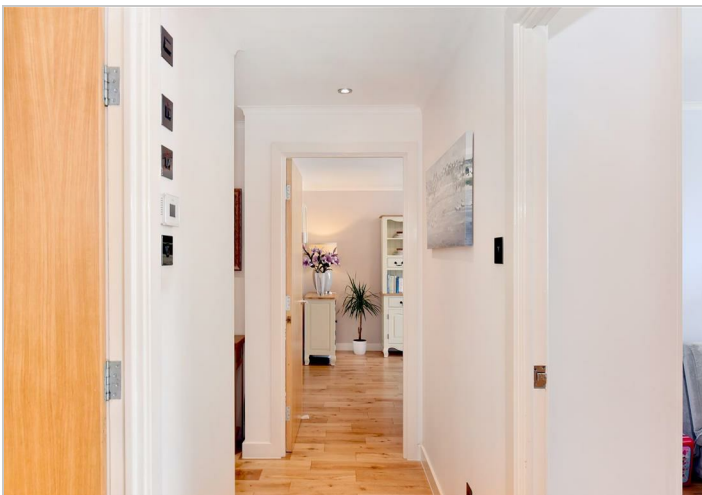
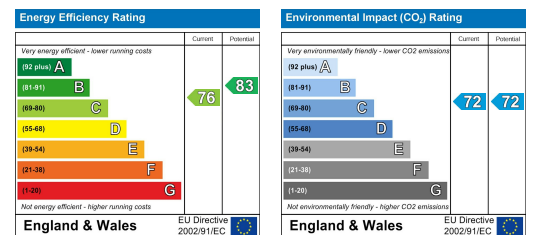
Floor Plan



Area Map



Energy Efficiency Graph



These particulars, whilst believed to be accurate are set out as a general outline only for guidance and do not constitute any part of an offer or contract. Intending purchasers should not rely on them as statements of representation of fact, but must satisfy themselves by inspection or otherwise as to their accuracy. No person in this firm's employment has the authority to make or give any representation or warranty in respect of the property.